

# CLS



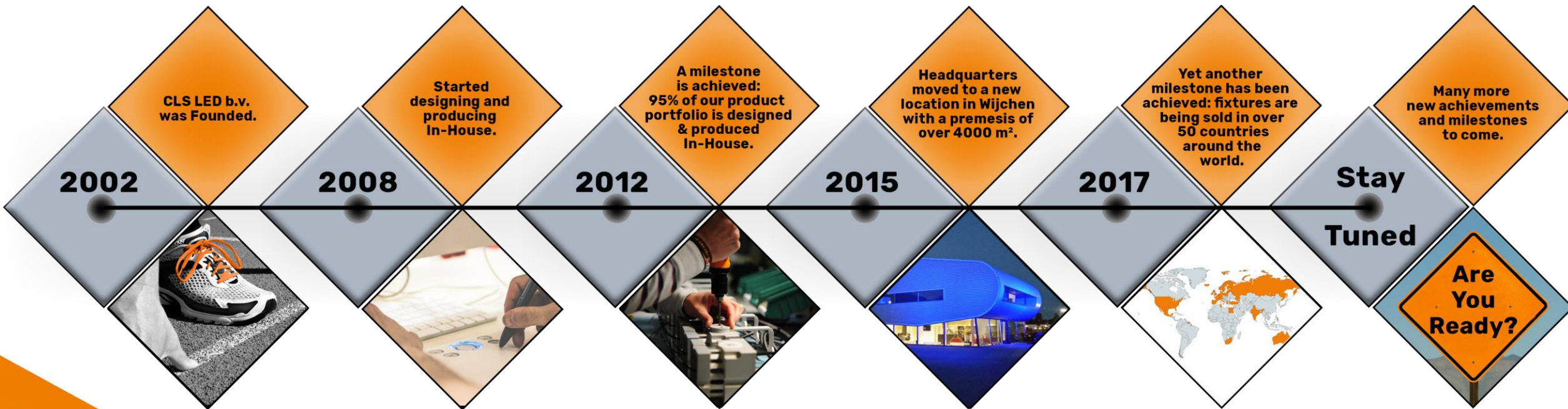
Design & Production of LED Lighting Solutions

**Creative LED Solutions since 2002**



## > Who we are

- > A Dutch manufacturer of high-end LED fixtures.
- > Part of a long standing holding with over 30 years of experience in the Lighting business.
- > Strong and independent financial position.
- > Distinctively strong in personalized lighting solutions for all kinds of projects.



## > Core Values

## Passion for lighting since 1987

CLS is a 100% Dutch manufacturer of high quality LED lighting solutions. We are founded in 2002 and are part of a family holding, that is present in the professional lighting market since 1987.

## Quality is in our DNA

A strong financial position enables us to develop & manufacture lighting solutions without compromises in design & performance.  
Customer satisfaction is our primary goal!

## Lighting; the development never stops

The demands & wishes of architects, designers and end users are the basis for the developments of our product families. Continuously new lighting solutions are created for specific lighting projects around the Globe.



# > Worldwide Experience

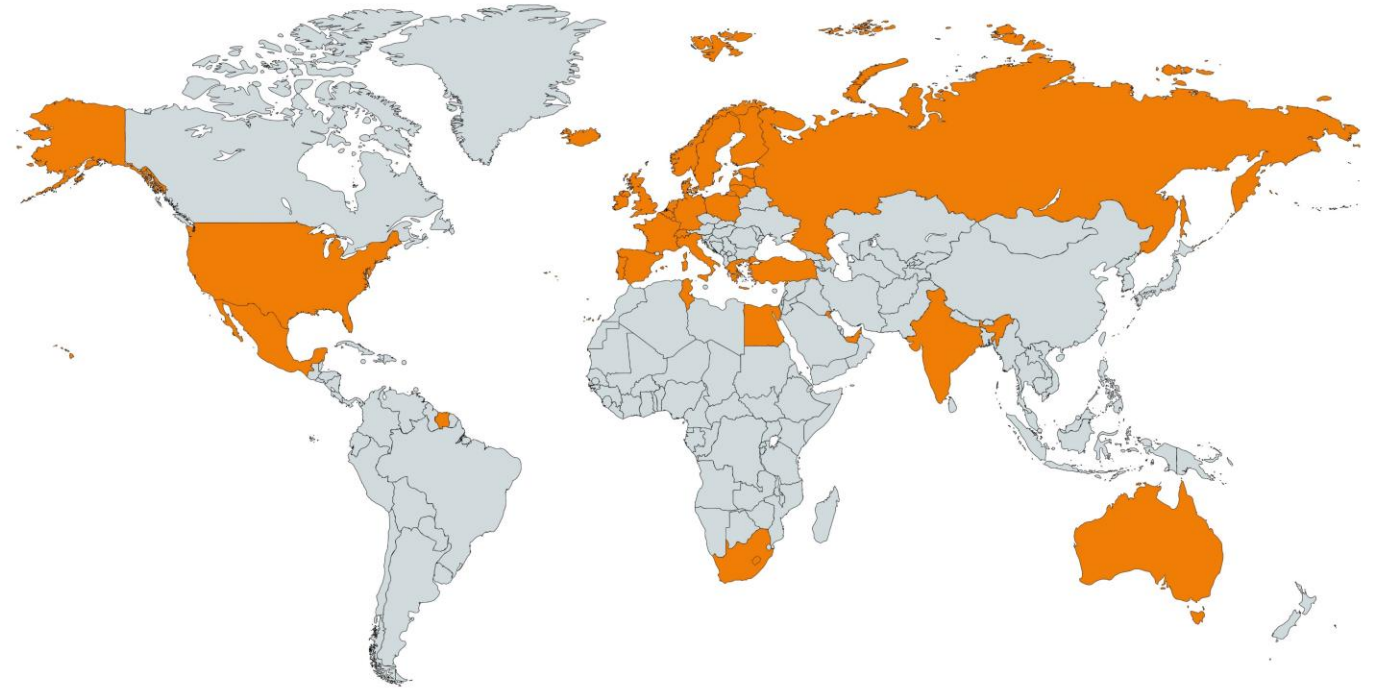
> Our ever expanding international presence is vastly exceeding our previous goal of exporting to distributors in 50 countries worldwide!

## Europe

- > The Netherlands
- > Belgium
- > Germany
- > Spain
- > France
- > Wales
- > Scotland
- > Poland
- > Italy
- > Estonia
- > Austria
- > Czech Republic
- > Iceland
- > Turkey
- > Moldavia
- > Bosnia and Herzegovina
- > Greece
- > Swiss
- > Lithuania
- > Hungary
- > Sweden
- > Finland
- > Norway
- > Latvia
- > Denmark
- > England
- > Ireland
- > Portugal
- > Slovakia
- > Serbia
- > Montenegro
- > Réunion

## Rest of the world

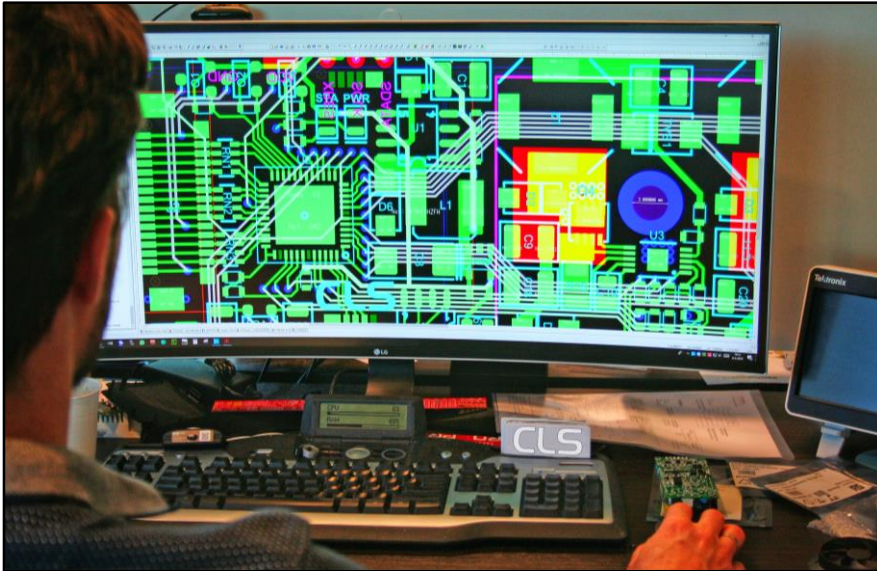
- > South Africa
- > Tunisia
- > Morocco
- > Egypt
- > United States
- > Mexico
- > Suriname
- > Azerbaijan
- > Thailand
- > Indonesia
- > Australia
- > Hong Kong
- > Singapore
- > Georgia
- > India
- > United Arab Emirates
- > Israël
- > Russia
- > Vietnam





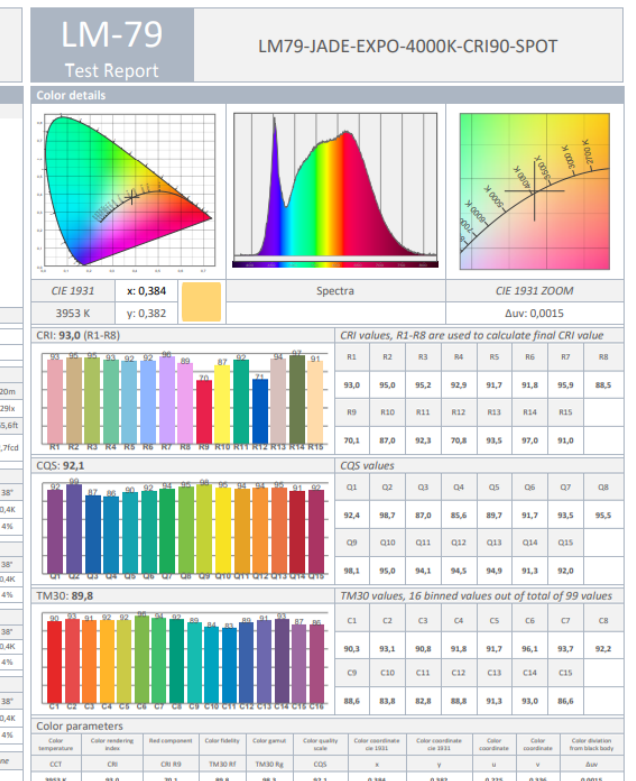
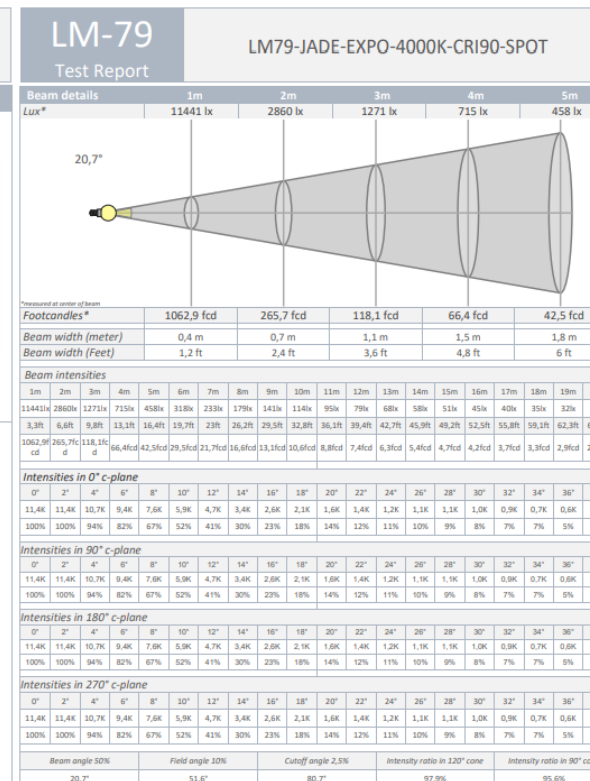
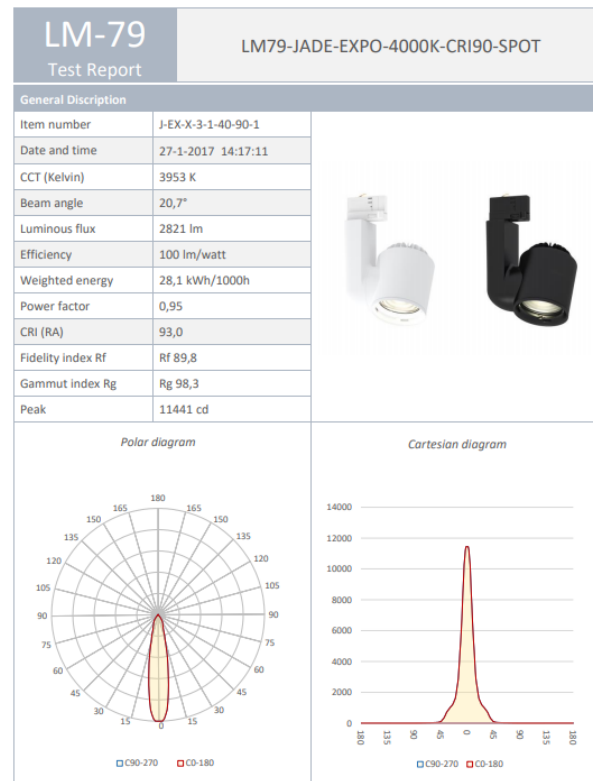
## > In-House R&D

- > CLS has a R&D department, consisting of young developers who are responsible for many great innovative successes.
- > Through our years of experience we are able to turn any request into a prototype and ready to market lighting solution.
- > Software development happens In-House to guarantee seamless functionality.



# > In-House LM79 measurements laboratory

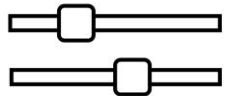
- > Our fixtures are tested by international ISMT- and LM79-008 protocols.
- > Having a private light lab makes it possible to generate [.LDT](#) files for every LED fixture.
- > The photometrics on our website are generated according to the .LDT data to ensure trustworthy advice (made visible below).



## > Future Proof Designs

From the day we started we had a clear vision about the way the world would become greener. All our lighting fixtures are **modular built** with the possibility to **exchange or upgrade all individual parts**. Furthermore we offer many ways of **smart controlling** in order to save additional energy and to further extend the life time of our fixtures.

**SMART  
CONTROL**



**MODULAR  
BUILD**



**ONLINE  
CONFIGURABLE**



**100%  
UPGRADABLE**



**Designed for future  
generations  
in a greener world!**

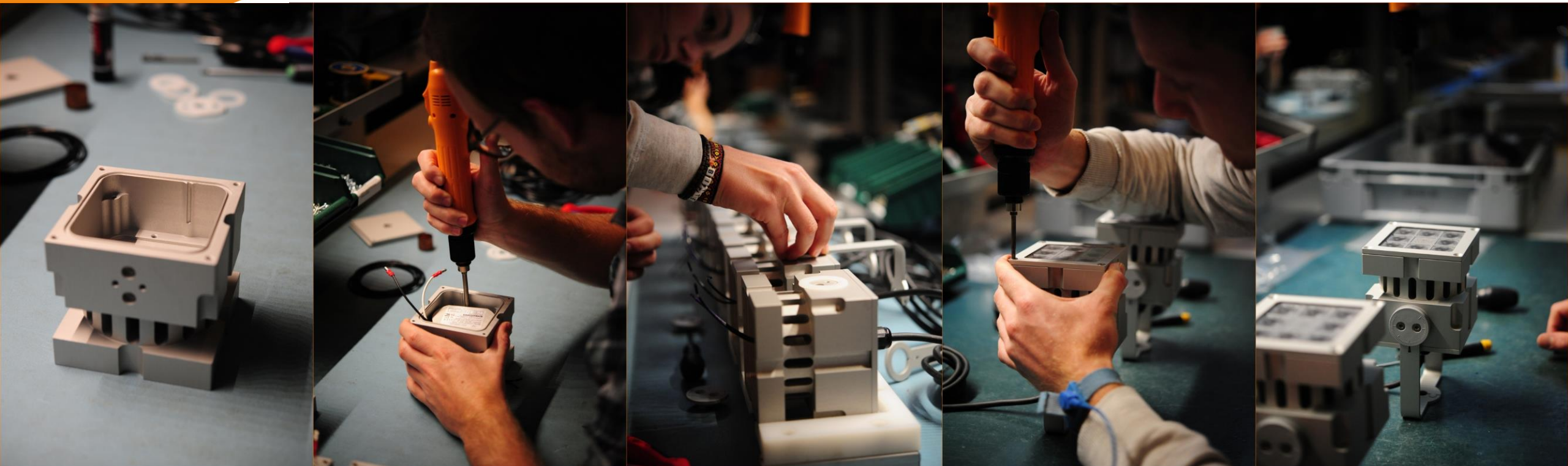
**CLS**



## > In-House production

- > All CLS fixtures are produced In-House in the Netherlands.
- > Every fixture gets tested for 24+ hours before packaging.
- > Standard delivery time within 2-3 weeks.
- > We solely uses high quality parts in our fixtures.

CLS





## > Only the best quality parts for our fixtures

> CLS is using high quality parts from well known brands for its fixtures. Take a look at the brands we use:



CASAMBI



LUMILEDS



sapa:



LEDiL



CITIZEN



TCI LED  
professional led applications



FULHAM  
*Lighting... Global. Intelligent. Sustainable.*



XICATO®

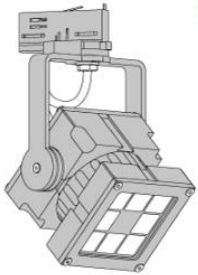
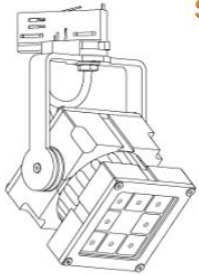
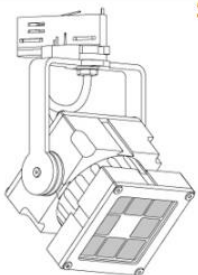
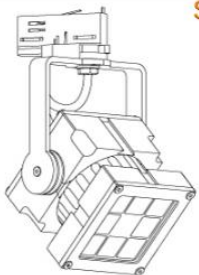


GAGGIONE

CLS

## > Customizability as a result of modular designs

- > We specifically choose to only use modular designed constructions.
- > Easy to use configuration tool on our website (image beneath).
- > Take for instance our REVO Track series, specifically the Colour Flow DMX version. This specific fixture already has 72 possible configurations.

<p>Configurator REVO Track Colour Flow DMX series</p> <p><b>Step 1</b></p> 	<p>Choose Adapter</p> <ul style="list-style-type: none"><li><input type="radio"/> Track DMX- grey Eutrac adapter</li><li><input type="radio"/> Track DMX- black Eutrac adapter</li><li><input checked="" type="radio"/> Track DMX- grey Global adapter</li><li><input type="radio"/> Track DMX- black Global adapter</li></ul> <p>NEXT &gt;</p>	<p>Configurator REVO Track Colour Flow DMX series</p> <p><b>Step 3</b></p> 	<p>Choose LED_Colour</p> <ul style="list-style-type: none"><li><input type="radio"/> RGBA</li><li><input checked="" type="radio"/> RGBW</li><li><input type="radio"/> AWB</li></ul> <p>&lt; BACK    NEXT &gt;</p>
<p>Configurator REVO Track Colour Flow DMX series</p> <p><b>Step 2</b></p> 	<p>Choose Lenskit</p> <ul style="list-style-type: none"><li><input type="radio"/> 8° lenses (superspot)</li><li><input type="radio"/> 12° lenses (spot)</li><li><input type="radio"/> 30° lenses (medium flood)</li><li><input type="radio"/> 61° lenses (wide flood)</li><li><input type="radio"/> 80° lenses (extra wide)</li><li><input checked="" type="radio"/> 12x46° lenses (elliptical)</li></ul> <p>&lt; BACK    NEXT &gt;</p>	<p>Configurator REVO Track Colour Flow DMX series</p> <p><b>Step 4</b></p> 	<p>YOUR PRODUCT IS READY</p> <p>PRINT</p> <p>GET A QUOTE</p> <p>MANUAL</p> <p>BROCHURE</p> <p>&lt; BACK</p>



## > Extensive product portfolio

- > The tiles below display a part of our total portfolio.
- > Interested in any of these fixtures? Click specific product for more information.



## > Customer Statements

**Adel Behzadi – CEO**  
**KTC, Kuwait**

*"Thanks to willingness of CLS to design special fixtures for the Ministry of Awcaf & Islamic Affairs, we are now the major lighting supplier of mosque's in Kuwait."*

**David Gray – Architectural Lighting Manager**  
**Oasis PPD, Dubai**

*"On the first project that we cooperated, we used 1600 DMX zoom fixtures. Only 2 fixtures had a small issue. I was really surprised in a positive way."*

**Nich Smith – Lighting Designer**  
**Lighting Design Glasgow, England**

*"CLS amazed me with their willingness to design a tailor made solution, without even having a confirmed order, their approach is really helpful for getting the job done as a lighting designer."*

**Pelle Herfst – Lighting Designer**  
**Rapenburg Plaza, The Netherlands**

*"Finally a lighting manufacturer that really listens to us and transforms our ideas in actual lighting solutions."*

**CLS**



## > This is Holland - The Netherlands

### > Used Fixtures:

> Jade Colour Flow

> Ruby Bracket

> REVO Compact Basic

> Luxo 3 Basic COB

> LON GII Bracket

> Focus Compact GII

> Emerald M



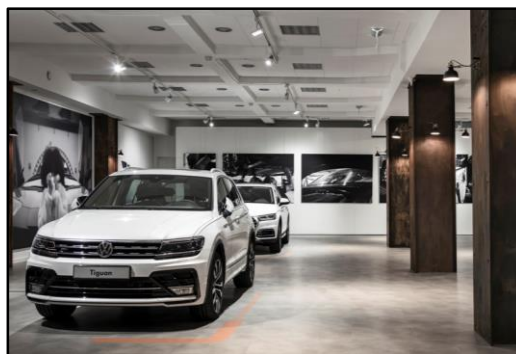
\*Interested? Click the fixture- or project photo for more info!

CLS

# > Losch Driving Dreams - Luxembourg

## > Used Fixtures:

- > Sapphire GII
- > Ultima Track



\*Interested? Click the fixture- or project photo for more info!



# > Zaans Museum- The Netherlands

## > Used Fixtures:

- > REVO Compact Track Colour Flow DMX



\*Interested? Click the fixture- or project photo for more info!

CLS

# > Hof van Nederland - The Netherlands

## > Used Fixtures:

- > Sapphire GII
- > Ultima Track
- > REVO Compact Track



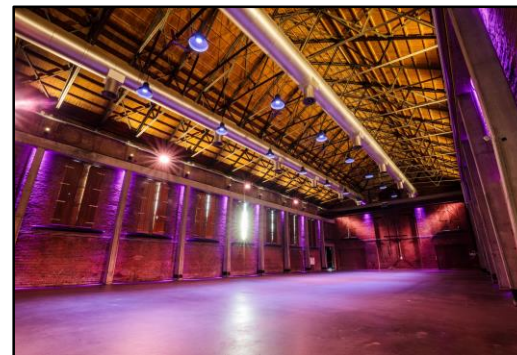
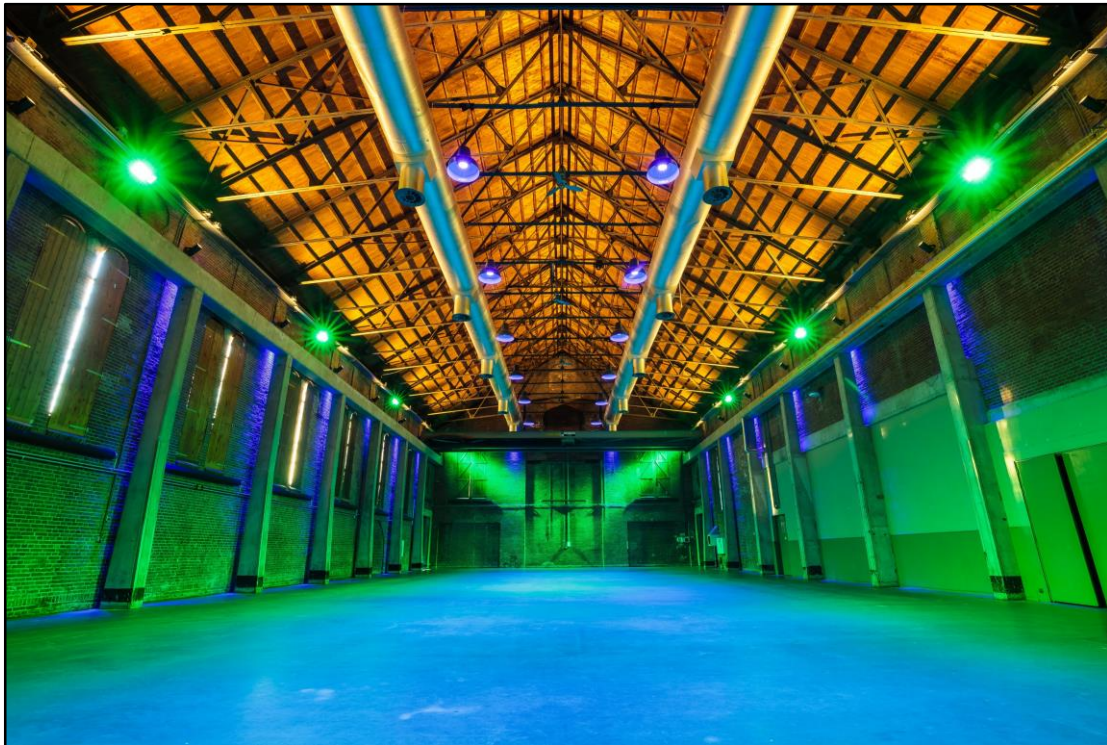
\*Interested? Click the fixture- or project photo for more info!



# > Westergasfabriek transformatorhuis - The Netherlands

## > Used Fixtures:

> Ruby Bracket



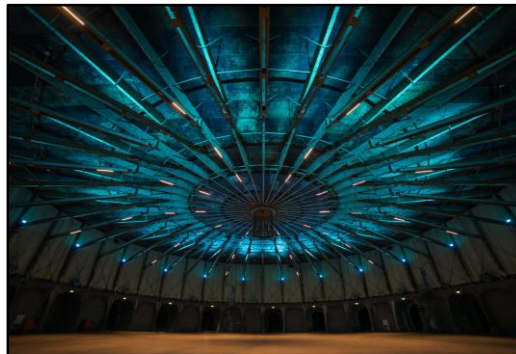
\*Interested? Click the fixture- or project photo for more info!

CLS

# > Gashouder Westergasfabriek - The Netherlands

## > Used Fixtures:

- > REVO Colour Flow DMX-8
- > Lina Clip HP
- > REVO Compact basic



\*Interested? Click the fixture- or project photo for more info!



# > Amstel Hotel - The Netherlands

## > Used Fixtures:

- > REVO Inground Tunable White DMX-8
- > REVO Tunable White DMX-8



\*Interested? More info coming soon!

CLS



# > De Heus - The Netherlands

## > Used Fixtures:

- > REVO Compact Basic
- > REVO Basic
- > REVO Colour Flow DMX-8



\*Interested? Click the fixture- or project photo for more info!



# > National Military Museum - The Netherlands

## > Used Fixtures:

> Focus Track DMX

> Lina Clip HP

> LON GII

> Focus Spot

> Ultima



\*Interested? Click the fixture- or project photo for more info!

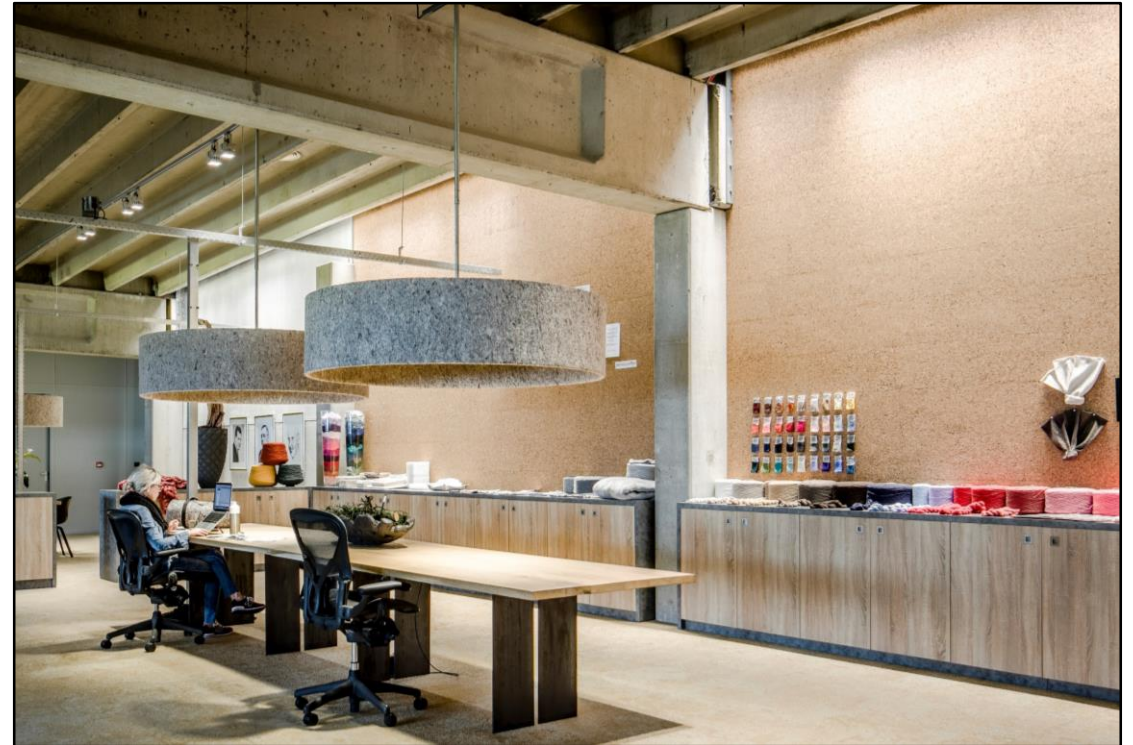
CLS



# > Wolkat- The Netherlands

## > Used Fixtures:

- > Lina Clip RP
- > Lina Clip MP
- > REVO Track
- > Ultima



\*Interested? Click the fixture- or project photo for more info!





A complete line of fixtures for: office, retail, leisure & outdoor applications

Innovative & high quality design

Produced in The Netherlands

Up to 5 years warranty

**LED lighting designed & produced in The Netherlands since 2002**

**Sign up for  
our newsletter**

**Visit our Website**

The logo consists of the letters 'CLS' in a bold, sans-serif font. The letters are white and have a slight 3D effect with a darker white shadow on the right side of each letter. The background is a solid orange color.