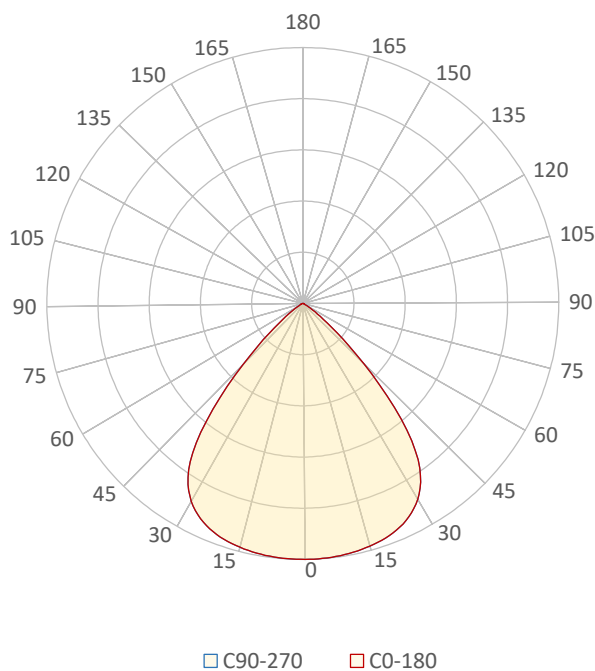


#### General Description

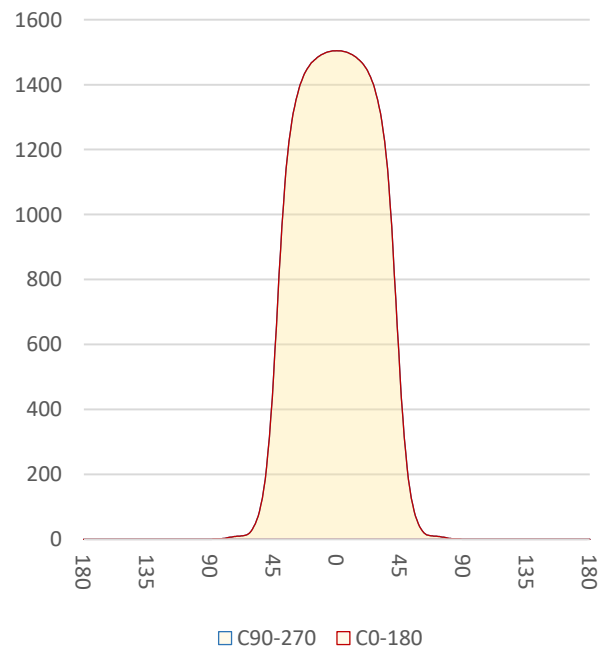
Item number	E-M6-X-X-2790
Date and time	2-12-2022 12:44:55
CCT (Kelvin)	2682 K
Beam angle	83,6°
Luminous flux	2445 lm
Efficiency	90 lm/watt
Weighted energy	27,1 kWh/1000h
Power factor	0,97
CRI (RA)	92,7
Fidelity index Rf	Rf 89,8
Gammut index Rg	Rg 103,6
Peak	1504 cd



*Polar diagram*



*Cartesian diagram*



# LM-79

## Test Report

# LM79-EMERALD-M6-2700K-CRI90

Beam details	1m	2m	3m	4m	5m																			
Lux*	1504 lx	376 lx	167 lx	94 lx	60 lx																			
*measured at center of beam																								
Footcandles*	139,8 fcd	34,9 fcd	15,5 fcd	8,7 fcd	5,6 fcd																			
Beam width (meter)	1,8 m	3,6 m	5,4 m	7,2 m	8,9 m																			
Beam width (Feet)	5,9 ft	11,7 ft	17,6 ft	23,5 ft	29,3 ft																			
<b>Beam intensities</b>																								
1m	2m	3m	4m	5m	6m	7m	8m	9m	10m	11m	12m	13m	14m	15m	16m	17m	18m	19m	20m					
1504lx	376lx	167lx	94lx	60lx	42lx	31lx	24lx	19lx	15lx	12lx	10lx	9lx	8lx	7lx	6lx	5lx	5lx	4lx	4lx					
3,3ft	6,6ft	9,8ft	13,1ft	16,4ft	19,7ft	23ft	26,2ft	29,5ft	32,8ft	36,1ft	39,4ft	42,7ft	45,9ft	49,2ft	52,5ft	55,8ft	59,1ft	62,3ft	65,6ft					
139,8fcd	34,9fcd	15,5fcd	8,7fcd	5,6fcd	3,9fcd	2,9fcd	2,2fcd	1,7fcd	1,4fcd	1,2fcd	1fcd	0,8fcd	0,7fcd	0,6fcd	0,5fcd	0,5fcd	0,4fcd	0,4fcd	0,3fcd					
<b>Intensities in 0° c-plane</b>																								
0°	5°	10°	15°	20°	25°	30°	35°	40°	45°	50°	55°	60°	65°	70°	75°	80°	85°	90°	95°					
1504	1502	1494	1480	1456	1412	1334	1186	892	505	222	87	32	12	10	7	3	1	0	0					
100%	100%	99%	98%	97%	94%	89%	79%	59%	34%	15%	6%	2%	1%	1%	0%	0%	0%	0%	0%					
<b>Intensities in 90° c-plane</b>																								
0°	5°	10°	15°	20°	25°	30°	35°	40°	45°	50°	55°	60°	65°	70°	75°	80°	85°	90°	95°					
1504	1502	1494	1480	1456	1412	1334	1186	892	505	222	87	32	12	10	7	3	1	0	0					
100%	100%	99%	98%	97%	94%	89%	79%	59%	34%	15%	6%	2%	1%	1%	0%	0%	0%	0%	0%					
<b>Intensities in 180° c-plane</b>																								
0°	5°	10°	15°	20°	25°	30°	35°	40°	45°	50°	55°	60°	65°	70°	75°	80°	85°	90°	95°					
1504	1502	1494	1480	1456	1412	1334	1186	892	505	222	87	32	12	10	7	3	1	0	0					
100%	100%	99%	98%	97%	94%	89%	79%	59%	34%	15%	6%	2%	1%	1%	0%	0%	0%	0%	0%					
<b>Intensities in 270° c-plane</b>																								
0°	5°	10°	15°	20°	25°	30°	35°	40°	45°	50°	55°	60°	65°	70°	75°	80°	85°	90°	95°					
1504	1502	1494	1480	1456	1412	1334	1186	892	505	222	87	32	12	10	7	3	1	0	0					
100%	100%	99%	98%	97%	94%	89%	79%	59%	34%	15%	6%	2%	1%	1%	0%	0%	0%	0%	0%					
<b>Beam angle 50%</b>					<b>Field angle 10%</b>					<b>Cutoff angle 2,5%</b>					<b>Intensity ratio in 120° cone</b>					<b>Intensity ratio in 90° cone</b>				
83,6°					104,2°					118,4°					99,0%					89,6%				



**CLS LED BV**  
 info@cls-led.com  
 www.cls-led.com

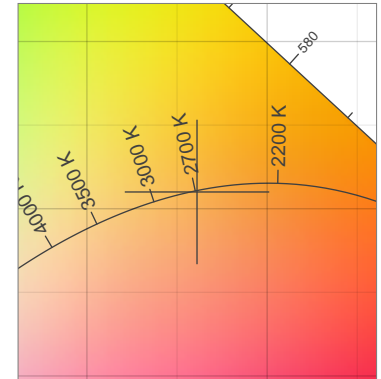
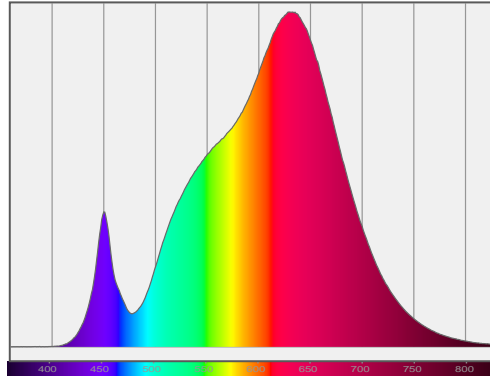
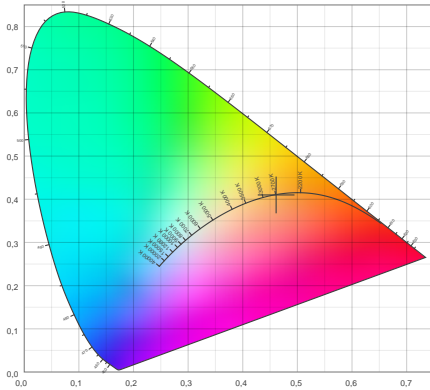
2021 CLS-LED BV. All rights reserved. Information subject to change without notice, CLS-LED BV and all affiliated companies disclaim liability for injury, damage direct or indirect loss, consequential or economic loss or any other loss occasioned by the use of, inability to use or reliance on the information contained in this document. No part of this document may be reproduced, in any form or by any means, without permission in writing from CLS-LED BV. Other legal information can be found in our General conditions, found on the back of your CLS-LED BV invoice, inside the CLS catalogue or on our website [www.cls-led.com/voorwaarden.pdf](http://www.cls-led.com/voorwaarden.pdf)

# LM-79

## Test Report

# LM79-EMERALD-M6-2700K-CRI90

### Color details



CIE 1931

x: 0,461



Spectra

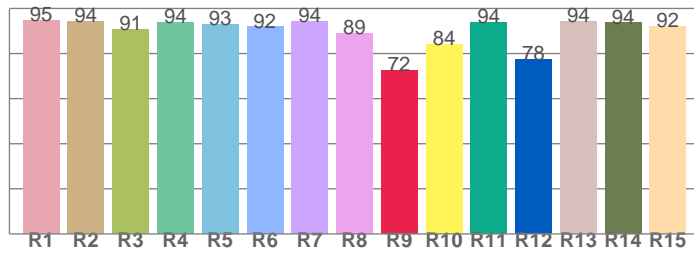
CIE 1931 ZOOM

2682 K

y: 0,410

$\Delta uv$ : -0,0004

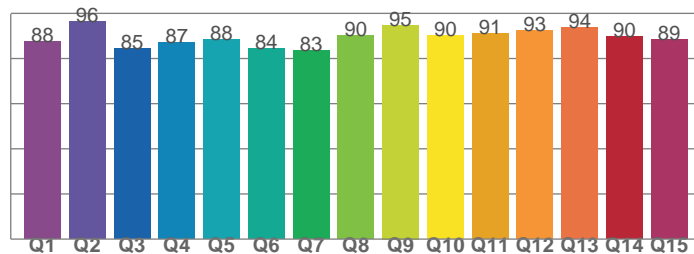
**CRI: 92,7 (R1-R8)**



*CRI values, R1-R8 are used to calculate final CRI value*

R1	R2	R3	R4	R5	R6	R7	R8
94,6	94,2	90,9	93,8	92,8	91,8	94,4	88,8
R9	R10	R11	R12	R13	R14	R15	
72,4	84,1	94,0	77,5	94,3	93,6	92,2	

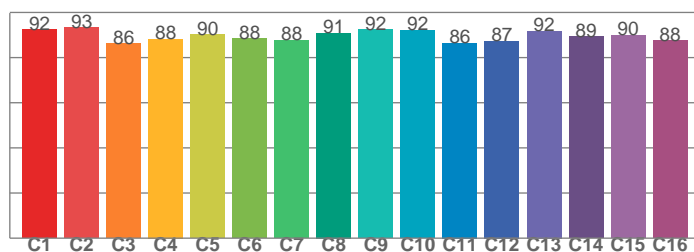
**CQS: 88,7**



*CQS values*

Q1	Q2	Q3	Q4	Q5	Q6	Q7	Q8
87,6	96,4	84,6	87,0	88,4	84,3	83,5	90,1
Q9	Q10	Q11	Q12	Q13	Q14	Q15	
94,8	90,1	91,2	92,6	93,7	89,7	88,6	

**TM30: 89,8**



*TM30 values, 16 binned values out of total of 99 values*

C1	C2	C3	C4	C5	C6	C7	C8
92,4	93,2	86,3	88,2	90,2	88,5	87,7	91,0
C9	C10	C11	C12	C13	C14	C15	
92,4	92,1	86,4	87,4	91,8	89,4	89,9	

### Color parameters

Color temperature	Color rendering index	Red component	Color fidelity	Color gamut	Color quality scale	Color coordinate cie 1931	Color coordinate cie 1931	Color coordinate	Color coordinate	Color deviation from black body
CCT	CRI	CRI R9	TM30 Rf	TM30 Rg	CQS	x	y	u	v	$\Delta uv$
2682 K	92,7	72,4	89,8	103,6	88,7	0,461	0,410	0,264	0,352	-0,0004



**CLS LED BV**  
 info@cls-led.com  
 www.cls-led.com

2021 CLS-LED BV. All rights reserved. Information subject to change without notice, CLS-LED BV and all affiliated companies disclaim liability for injury, damage direct or indirect loss, consequential or economic loss or any other loss occasioned by the use of, inability to use or reliance on the information contained in this document. No part of this document may be reproduced, in any form or by any means, without permission in writing from CLS-LED BV. Other legal information can be found in our General conditions, found on the back of your CLS-LED BV invoice, inside the CLS catalogue or on our website [www.cls-led.com/voorwaarden.pdf](http://www.cls-led.com/voorwaarden.pdf)

# LM-79

## Test Report

### LM79-EMERALD-M6-2700K-CRI90

#### TM30 details

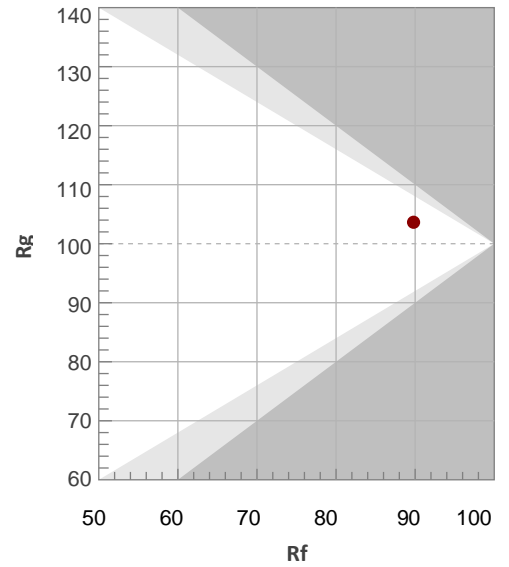
Rf 89,8

Fidelity index Rf

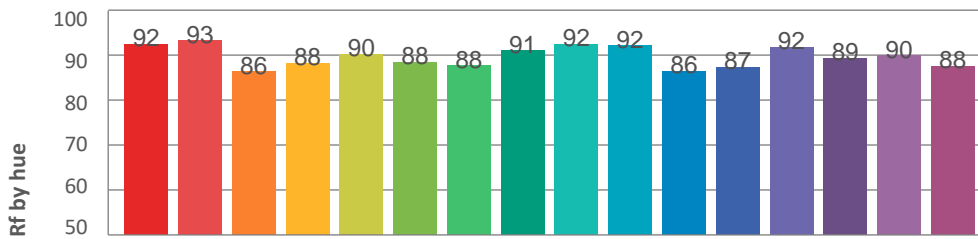
Rg 103,6

Gamut index Rg

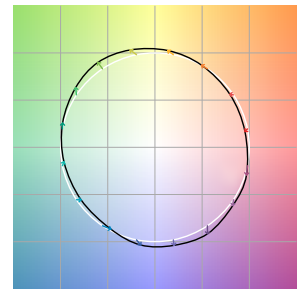
Hue Bin	R <sub>f</sub>	Graphic shifts (%)	
		Chroma	Hue
1	92	-3%	-2%
2	93	-3%	3%
3	86	0%	7%
4	88	3%	7%
5	90	6%	6%
6	88	8%	0%
7	88	5%	-6%
8	91	1%	-6%
9	92	-2%	-4%
10	92	-4%	3%
11	86	-2%	9%
12	87	4%	5%
13	92	6%	0%
14	89	7%	-5%
15	90	3%	-5%
16	88	1%	-10%



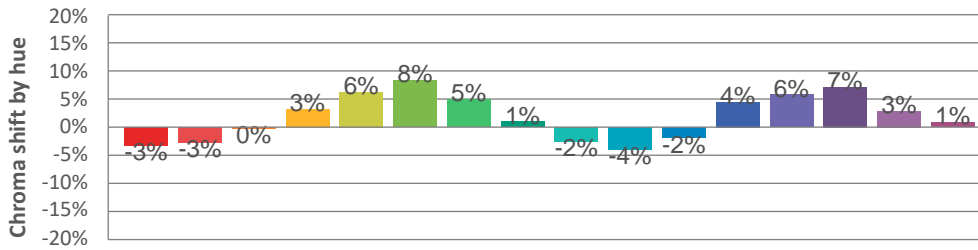
#### Hue binH



#### Color vector graphics



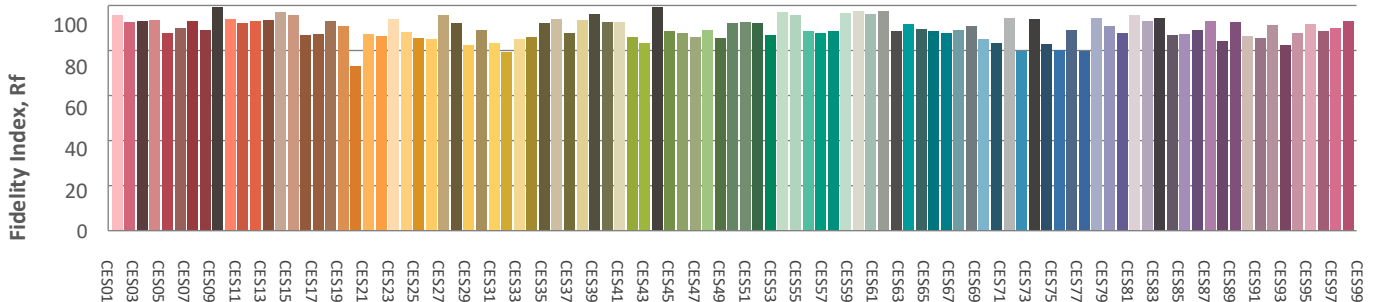
#### Hue bin



#### Color distortion graphics



#### Color Evaluation Sample



CLS LED BV  
 info@cls-led.com  
 www.cls-led.com

2021 CLS-LED BV. All rights reserved. Information subject to change without notice, CLS-LED BV and all affiliated companies disclaim liability for injury, damage direct or indirect loss, consequential or economic loss or any other loss occasioned by the use of, inability to use or reliance on the information contained in this document. No part of this document may be reproduced, in any form or by any means, without permission in writing from CLS-LED BV. Other legal information can be found in our General conditions, found on the back of your CLS-LED BV invoice, inside the CLS catalogue or on our website [www.cls-led.com/voorwaarden.pdf](http://www.cls-led.com/voorwaarden.pdf)

# LM-79

## Test Report

# LM79-EMERALD-M6-2700K-CRI90

### Glare Evaluation According to UGR

p Ceiling	70	70	50	50	30	70	70	50	50	30	
p Walls	50	30	50	30	30	50	30	50	30	30	
p Floor	20	20	20	20	20	20	20	20	20	20	
Room size X Y	Viewing direction at right angles to lamp axis					Viewing direction parallel to lamp axis					
2H	2H	28,9	29,7	29,1	30,0	30,2	28,9	29,7	29,1	30,0	30,2
	3H	28,6	29,5	29,0	29,8	29,9	28,6	29,5	29,0	29,8	29,9
	4H	28,6	29,4	29,0	29,7	29,9	28,6	29,4	29,0	29,7	29,9
	6H	28,6	29,3	28,9	29,6	29,9	28,6	29,3	28,9	29,6	29,9
	8H	28,5	29,2	28,8	29,5	29,9	28,5	29,2	28,8	29,5	29,9
	12H	28,4	29,1	28,8	29,5	29,9	28,4	29,1	28,8	29,5	29,9
4H	2H	28,6	29,4	29,0	29,7	29,9	28,6	29,4	29,0	29,7	29,9
	3H	28,5	29,1	28,8	29,5	29,9	28,5	29,1	28,8	29,5	29,9
	4H	28,3	28,9	28,7	29,4	29,9	28,3	28,9	28,7	29,4	29,9
	6H	28,2	28,9	28,7	29,2	29,6	28,2	28,9	28,7	29,2	29,6
	8H	28,2	28,8	28,7	29,1	29,5	28,2	28,8	28,7	29,1	29,5
	12H	28,1	28,6	28,6	29,0	29,5	28,1	28,6	28,6	29,0	29,5
8H	4H	28,2	28,8	28,7	29,1	29,5	28,2	28,8	28,7	29,1	29,5
	6H	28,1	28,5	28,6	29,0	29,5	28,1	28,5	28,6	29,0	29,5
	8H	28,1	28,5	28,6	29,0	29,6	28,1	28,5	28,6	29,0	29,6
	12H	28,1	28,3	28,7	28,8	29,5	28,1	28,3	28,7	28,8	29,5
12H	4H	28,1	28,6	28,6	29,0	29,5	28,1	28,6	28,6	29,0	29,5
	6H	28,1	28,5	28,6	29,0	29,6	28,1	28,5	28,6	29,0	29,6
	8H	28,1	28,3	28,7	28,8	29,5	28,1	28,3	28,7	28,8	29,5
Variation of the observer position for the luminaire distance S											
S = 1.0H	3,1 / -10,2					3,1 / -10,2					
S = 1.5H	5,5 / -17,3					5,5 / -17,3					
S = 2.0H	7,5 / -18,6					7,5 / -18,6					
Standard table	n/a					n/a					
Correction summand	n/a					n/a					
Corrected glare indices referring to 2445lm total luminous flux											



**CLS LED BV**  
 info@cls-led.com  
 www.cls-led.com

2021 CLS-LED BV. All rights reserved. Information subject to change without notice, CLS-LED BV and all affiliated companies disclaim liability for injury, damage direct or indirect loss, consequential or economic loss or any other loss occasioned by the use of, inability to use or reliance on the information contained in this document. No part of this document may be reproduced, in any form or by any means, without permission in writing from CLS-LED BV. Other legal information can be found in our General conditions, found on the back of your CLS-LED BV invoice, inside the CLS catalogue or on our website [www.cls-led.com/voorwaarden.pdf](http://www.cls-led.com/voorwaarden.pdf)