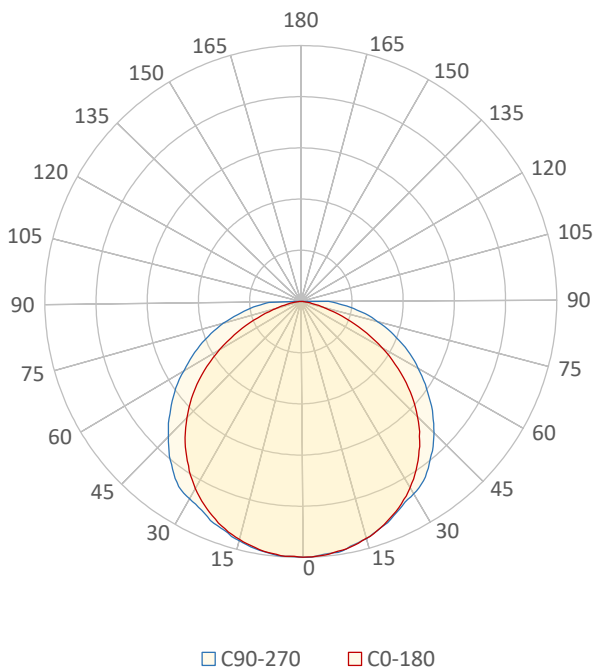


General Discription

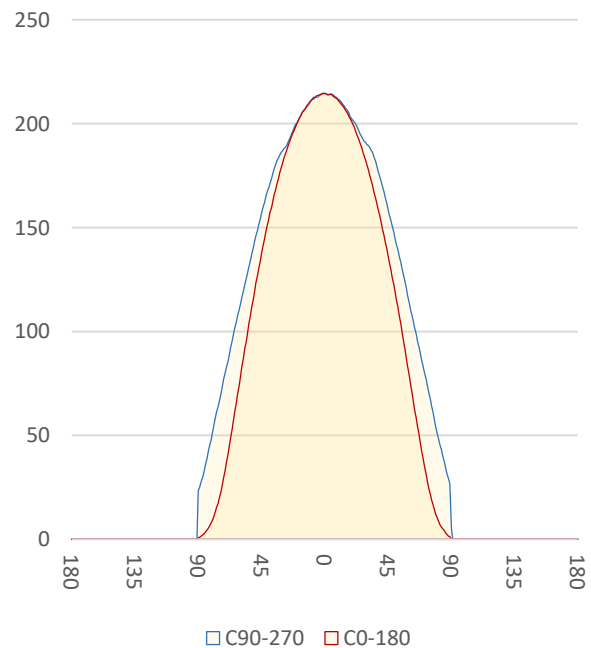
Item number	
Date and time	11-2-2022 14:39:32
CCT (Kelvin)	2713 K
Beam angle	124,2°
Luminous flux	639 lm
Efficiency	59 lm/watt
Weighted energy	10,8 kWh/1000h
Power factor	1,0
CRI (RA)	91,8
Fidelity index Rf	Rf 90,6
Gammut index Rg	Rg 99,1
Peak	215 cd



Polar diagram



Cartesian diagram



LM-79

Test Report

LM79-LINA-DF-2700K-55CM

Beam details	1m	2m	3m	4m	5m																			
Lux*	215 lx	54 lx	24 lx	13 lx	9 lx																			
*measured at center of beam																								
Footcandles*	19,9 fcd	5,0 fcd	2,2 fcd	1,2 fcd	0,8 fcd																			
Beam width (meter)	3,1 m	6,3 m	9,4 m	12,6 m	15,7 m																			
Beam width (Feet)	10,3 ft	20,7 ft	31 ft	41,3 ft	51,7 ft																			
Beam intensities																								
1m	2m	3m	4m	5m	6m	7m	8m	9m	10m	11m	12m	13m	14m	15m	16m	17m	18m	19m	20m					
215lx	54lx	24lx	13lx	9lx	6lx	4lx	3lx	3lx	2lx	2lx	1lx	1lx	1lx	1lx	1lx	1lx	1lx	1lx	1lx	1lx				
3,3ft	6,6ft	9,8ft	13,1ft	16,4ft	19,7ft	23ft	26,2ft	29,5ft	32,8ft	36,1ft	39,4ft	42,7ft	45,9ft	49,2ft	52,5ft	55,8ft	59,1ft	62,3ft	65,6ft					
19,9fcd	5fcd	2,2fcd	1,2fcd	0,8fcd	0,6fcd	0,4fcd	0,3fcd	0,2fcd	0,2fcd	0,2fcd	0,1fcd	0,1fcd	0,1fcd	0,1fcd	0,1fcd	0,1fcd	0,1fcd	0,1fcd	0fcd					
Intensities in 0° c-plane																								
0°	5°	10°	15°	20°	25°	30°	35°	40°	45°	50°	55°	60°	65°	70°	75°	80°	85°	90°	95°					
215	214	211	206	200	192	181	168	154	138	119	99	78	57	37	20	9	3	1	0					
100%	100%	98%	96%	93%	89%	84%	78%	72%	64%	56%	46%	36%	27%	17%	9%	4%	2%	0%	0%					
Intensities in 90° c-plane																								
0°	5°	10°	15°	20°	25°	30°	35°	40°	45°	50°	55°	60°	65°	70°	75°	80°	85°	90°	95°					
215	213	211	207	200	193	187	180	169	157	143	128	113	99	83	67	51	35	23	0					
100%	99%	98%	96%	93%	90%	87%	84%	79%	73%	67%	60%	53%	46%	39%	31%	24%	16%	11%	0%					
Intensities in 180° c-plane																								
0°	5°	10°	15°	20°	25°	30°	35°	40°	45°	50°	55°	60°	65°	70°	75°	80°	85°	90°	95°					
215	214	211	206	200	191	180	167	153	136	119	100	79	58	38	22	10	4	0	0					
100%	100%	98%	96%	93%	89%	84%	78%	71%	64%	55%	46%	37%	27%	18%	10%	5%	2%	0%	0%					
Intensities in 270° c-plane																								
0°	5°	10°	15°	20°	25°	30°	35°	40°	45°	50°	55°	60°	65°	70°	75°	80°	85°	90°	95°					
215	214	212	207	202	195	190	184	172	159	145	130	114	99	83	68	51	37	5	0					
100%	100%	99%	97%	94%	91%	89%	86%	80%	74%	67%	61%	53%	46%	39%	31%	24%	17%	3%	0%					
Beam angle 50%					Field angle 10%					Cutoff angle 2,5%					Intensity ratio in 120° cone					Intensity ratio in 90° cone				
115,2°					164,8°					173,3°					77,1%					52,3%				



CLS LED BV
 info@cls-led.com
 www.cls-led.com

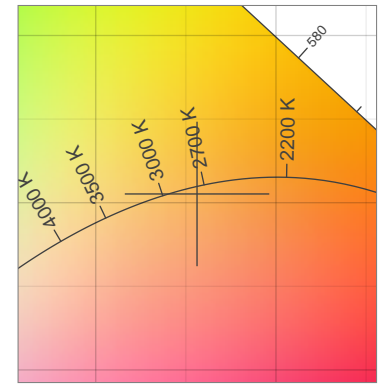
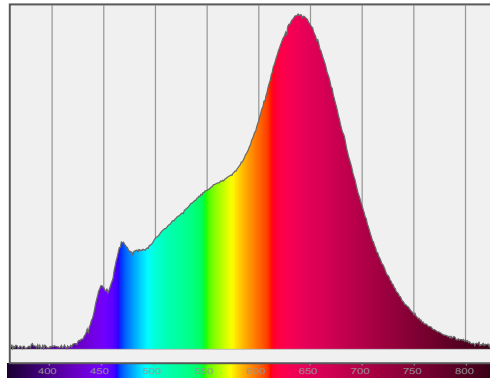
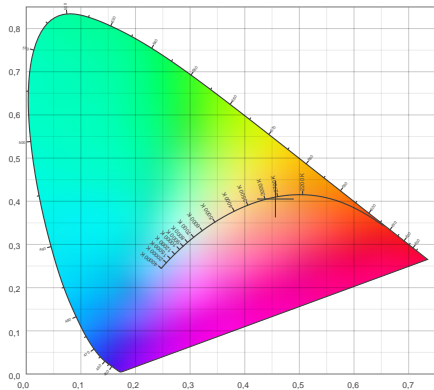
2021 CLS-LED BV. All rights reserved. Information subject to change without notice, CLS-LED BV and all affiliated companies disclaim liability for injury, damage direct or indirect loss, consequential or economic loss or any other loss occasioned by the use of, inability to use or reliance on the information contained in this document. No part of this document may be reproduced, in any form or by any means, without permission in writing from CLS-LED BV. Other legal information can be found in our General conditions, found on the back of your CLS-LED BV invoice, inside the CLS catalogue or on our website www.cls-led.com/voorwaarden.pdf

LM-79

Test Report

LM79-LINA-DF-2700K-55CM

Color details



CIE 1931

x: 0,456



Spectra

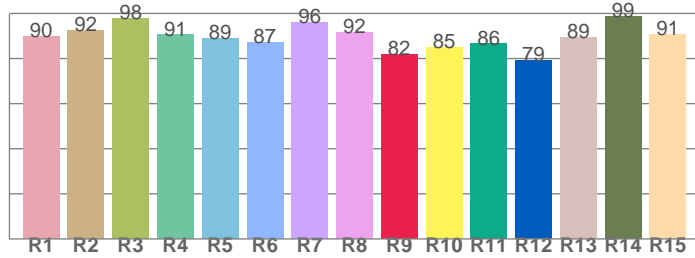
CIE 1931 ZOOM

2713 K

y: 0,405

$\Delta uv: -0,0017$

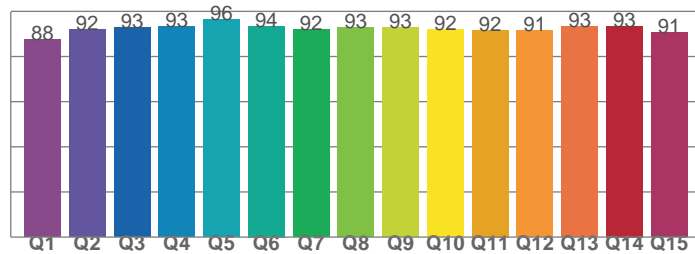
CRI: 91,8 (R1-R8)



CRI values, R1-R8 are used to calculate final CRI value

R1	R2	R3	R4	R5	R6	R7	R8
89,7	92,5	97,8	90,5	88,8	87,3	96,0	91,6
R9	R10	R11	R12	R13	R14	R15	
81,8	85,0	86,5	79,1	89,5	98,6	90,7	

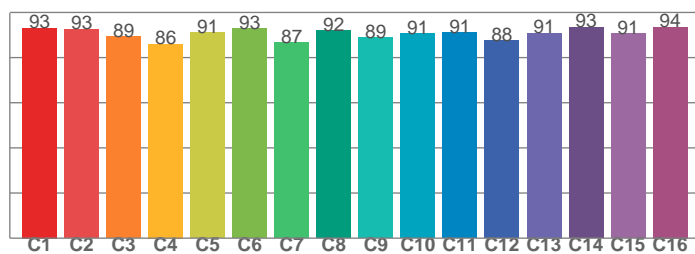
CQS: 92,1



CQS values

Q1	Q2	Q3	Q4	Q5	Q6	Q7	Q8
87,7	92,1	92,7	93,5	96,5	93,6	92,0	92,8
Q9	Q10	Q11	Q12	Q13	Q14	Q15	
93,0	92,0	91,7	91,5	93,2	93,5	90,5	

TM30: 90,6



TM30 values, 16 binned values out of total of 99 values

C1	C2	C3	C4	C5	C6	C7	C8
93,0	92,6	89,3	86,0	91,2	92,8	86,5	91,9
C9	C10	C11	C12	C13	C14	C15	
88,8	90,6	91,2	87,6	90,8	93,5	90,6	

Color parameters

Color temperature	Color rendering index	Red component	Color fidelity	Color gamut	Color quality scale	Color coordinate cie 1931	Color coordinate cie 1931	Color coordinate	Color coordinate	Color deviation from black body
CCT	CRI	CRI R9	TM30 Rf	TM30 Rg	CQS	x	y	u	v	Δuv
2713 K	91,8	81,8	90,6	99,1	92,1	0,456	0,405	0,263	0,350	-0,0017



CLS LED BV
 info@cls-led.com
 www.cls-led.com

2021 CLS-LED BV. All rights reserved. Information subject to change without notice, CLS-LED BV and all affiliated companies disclaim liability for injury, damage direct or indirect loss, consequential or economic loss or any other loss occasioned by the use of, inability to use or reliance on the information contained in this document. No part of this document may be reproduced, in any form or by any means, without permission in writing from CLS-LED BV. Other legal information can be found in our General conditions, found on the back of your CLS-LED BV invoice, inside the CLS catalogue or on our website www.cls-led.com/voorwaarden.pdf

LM-79

Test Report

LM79-LINA-DF-2700K-55CM

TM30 details

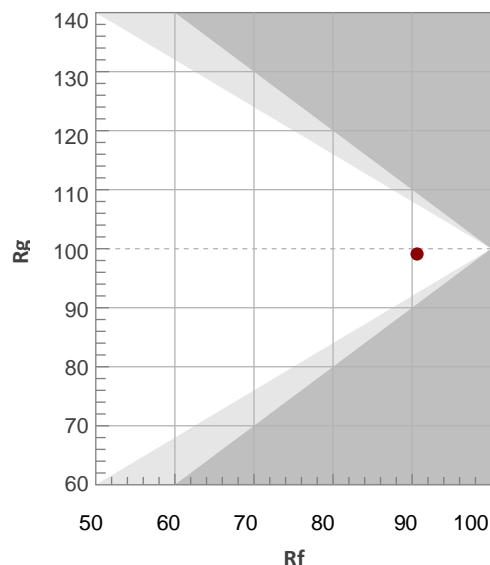
Rf 90,6

Fidelity index Rf

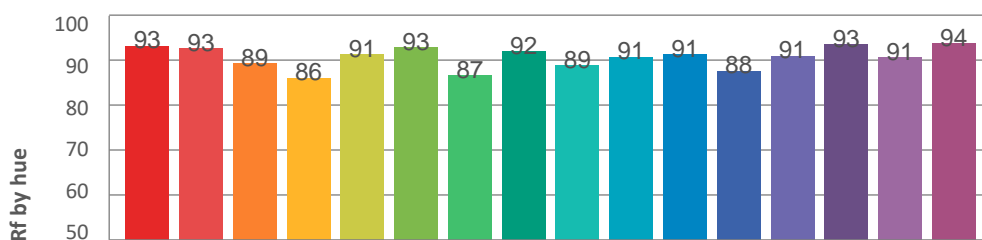
Rg 99,1

Gamut index Rg

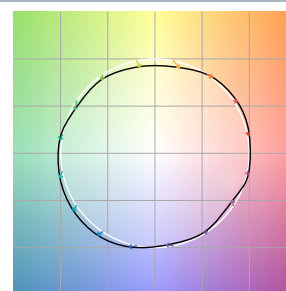
Hue Bin	R _f	Graphic shifts (%)	
		Chroma	Hue
1	93	2%	2%
2	93	3%	-3%
3	89	1%	-6%
4	86	-6%	-8%
5	91	-7%	-2%
6	93	-4%	3%
7	87	-4%	8%
8	92	2%	5%
9	89	4%	6%
10	91	6%	2%
11	91	6%	-2%
12	88	3%	-7%
13	91	-2%	-7%
14	93	-1%	-3%
15	91	-4%	4%
16	94	1%	-3%



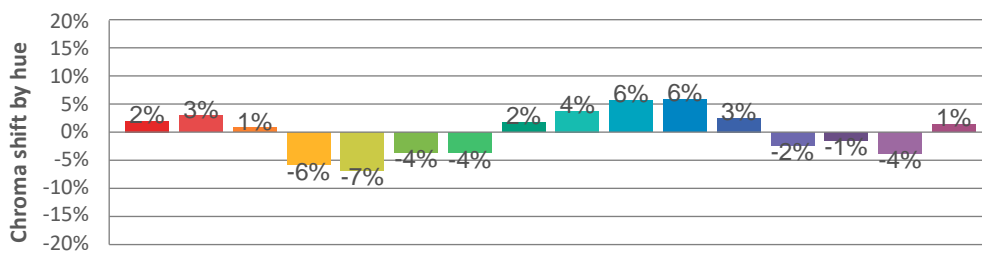
Hue binH



Color vector graphics



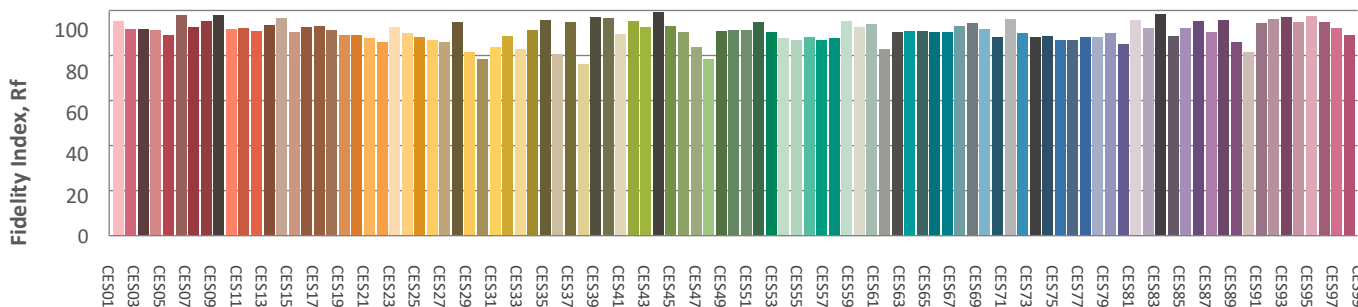
Hue bin



Color distortion graphics



Color Evaluation Sample



CLS LED BV
info@cls-led.com
www.cls-led.com

2021 CLS-LED BV. All rights reserved. Information subject to change without notice, CLS-LED BV and all affiliated companies disclaim liability for injury, damage direct or indirect loss, consequential or economic loss or any other loss occasioned by the use of, inability to use or reliance on the information contained in this document. No part of this document may be reproduced, in any form or by any means, without permission in writing from CLS-LED BV. Other legal information can be found in our General conditions, found on the back of your CLS-LED BV invoice, inside the CLS catalogue or on our website www.cls-led.com/voorwaarden.pdf

