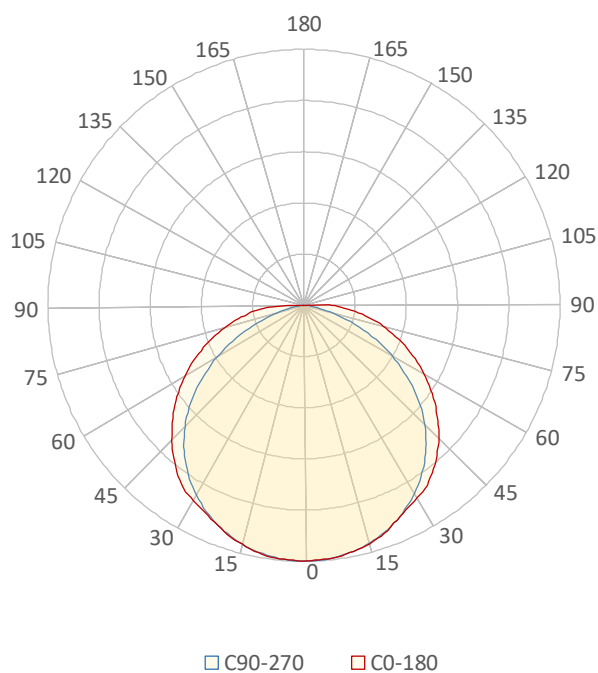


General Discription

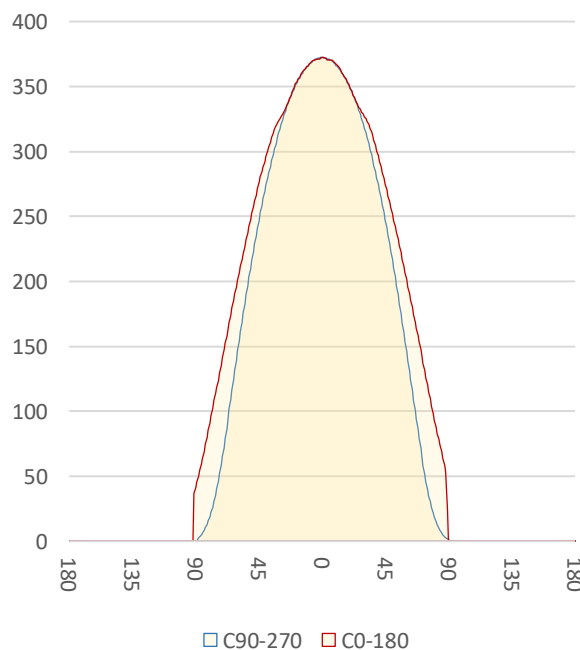
Item number	
Date and time	24-6-2024 13:38:28
CCT (Kelvin)	3040 K
Beam angle	109°
Luminous flux	1132 lm
Efficiency	70 lm/watt
Weighted energy	16,1 kWh/1000h
Power factor	1,0
CRI (RA)	91,8
Fidelity index Rf	Rf 89,5
Gammut index Rg	Rg 98,3
Peak	373 cd



Polar diagram



Cartesian diagram



LM-79

Test Report

LM79-LINA-DF-3000K-80CM

Beam details	1m	2m	3m	4m	5m																			
Lux*	372 lx	93 lx	41 lx	23 lx	15 lx																			
*measured at center of beam																								
Footcandles*	34,6 fcd	8,6 fcd	3,8 fcd	2,2 fcd	1,4 fcd																			
Beam width (meter)	3,3 m	6,6 m	9,8 m	13,1 m	16,4 m																			
Beam width (Feet)	10,8 ft	21,5 ft	32,3 ft	43,1 ft	53,8 ft																			
Beam intensities																								
1m	2m	3m	4m	5m	6m	7m	8m	9m	10m	11m	12m	13m	14m	15m	16m	17m	18m	19m	20m					
372lx	93lx	41lx	23lx	15lx	10lx	8lx	6lx	5lx	4lx	3lx	3lx	2lx	2lx	2lx	1lx	1lx	1lx	1lx	1lx					
3,3ft	6,6ft	9,8ft	13,1ft	16,4ft	19,7ft	23ft	26,2ft	29,5ft	32,8ft	36,1ft	39,4ft	42,7ft	45,9ft	49,2ft	52,5ft	55,8ft	59,1ft	62,3ft	65,6ft					
34,6fcd	8,6fcd	3,8fcd	2,2fcd	1,4fcd	1fcd	0,7fcd	0,5fcd	0,4fcd	0,3fcd	0,3fcd	0,2fcd	0,2fcd	0,2fcd	0,2fcd	0,1fcd	0,1fcd	0,1fcd	0,1fcd	0,1fcd					
Intensities in 0° c-plane																								
0°	5°	10°	15°	20°	25°	30°	35°	40°	45°	50°	55°	60°	65°	70°	75°	80°	85°	90°	95°					
372	371	366	360	349	336	325	314	296	276	252	227	201	174	147	119	91	64	41	0					
100%	100%	98%	97%	94%	90%	87%	84%	80%	74%	68%	61%	54%	47%	40%	32%	24%	17%	11%	0%					
Intensities in 90° c-plane																								
0°	5°	10°	15°	20°	25°	30°	35°	40°	45°	50°	55°	60°	65°	70°	75°	80°	85°	90°	95°					
372	371	366	359	348	334	317	297	274	247	216	183	146	109	72	40	19	7	0	0					
100%	100%	98%	96%	93%	90%	85%	80%	74%	66%	58%	49%	39%	29%	19%	11%	5%	2%	0%	0%					
Intensities in 180° c-plane																								
0°	5°	10°	15°	20°	25°	30°	35°	40°	45°	50°	55°	60°	65°	70°	75°	80°	85°	90°	95°					
372	370	367	359	349	336	327	315	297	275	252	227	201	174	148	120	93	69	0	0					
100%	99%	99%	96%	94%	90%	88%	85%	80%	74%	68%	61%	54%	47%	40%	32%	25%	18%	0%	0%					
Intensities in 270° c-plane																								
0°	5°	10°	15°	20°	25°	30°	35°	40°	45°	50°	55°	60°	65°	70°	75°	80°	85°	90°	95°					
372	371	366	359	349	335	318	298	275	248	217	182	146	108	72	40	18	6	1	0					
100%	100%	98%	96%	94%	90%	85%	80%	74%	66%	58%	49%	39%	29%	19%	11%	5%	2%	0%	0%					
Beam angle 50%					Field angle 10%					Cutoff angle 2,5%					Intensity ratio in 120° cone					Intensity ratio in 90° cone				
117,3°					165,4°					173,5°					76,6%					51,6%				



CLS LED BV
 info@cls-led.com
 www.cls-led.com

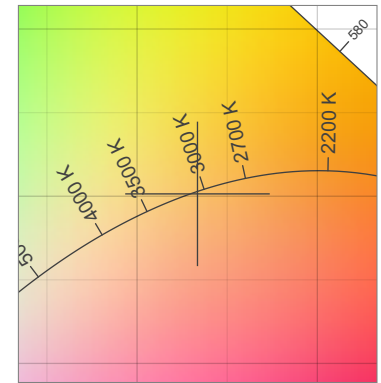
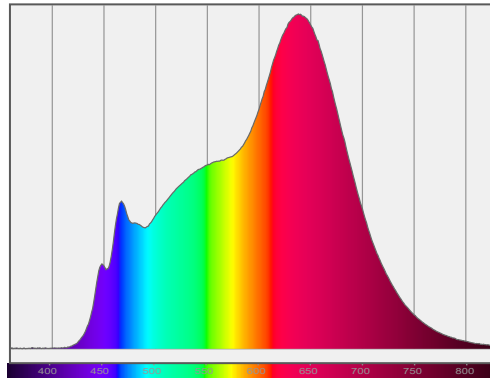
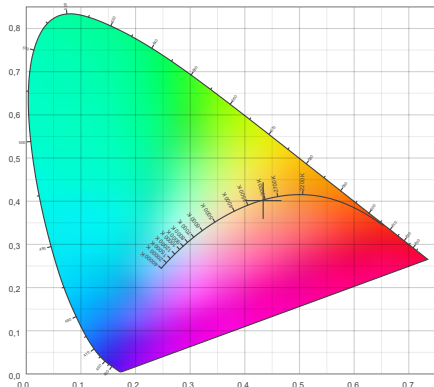
2021 CLS-LED BV. All rights reserved. Information subject to change without notice, CLS-LED BV and all affiliated companies disclaim liability for injury, damage direct or indirect loss, consequential or economic loss or any other loss occasioned by the use of, inability to use or reliance on the information contained in this document. No part of this document may be reproduced, in any form or by any means, without permission in writing from CLS-LED BV. Other legal information can be found in our General conditions, found on the back of your CLS-LED BV invoice, inside the CLS catalogue or on our website www.cls-led.com/voorwaarden.pdf

LM-79

Test Report

LM79-LINA-DF-3000K-80CM

Color details



CIE 1931

x: 0,434



Spectra

CIE 1931 ZOOM

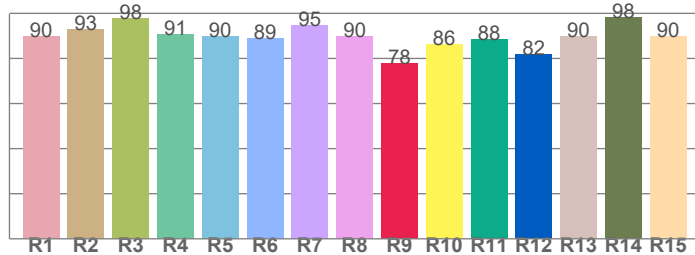
3040 K

y: 0,401

Δuv : -0,0006

CRI: 91,8 (R1-R8)

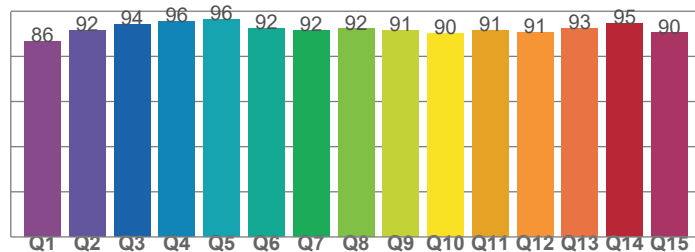
CRI values, R1-R8 are used to calculate final CRI value



R1	R2	R3	R4	R5	R6	R7	R8
89,8	92,9	98,0	90,9	89,7	89,1	94,5	89,7
R9	R10	R11	R12	R13	R14	R15	
77,9	86,1	88,3	82,0	89,8	98,4	89,9	

CQS: 91,7

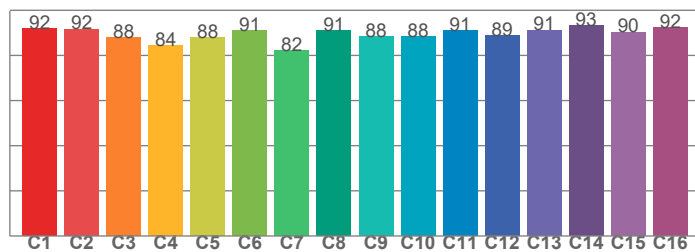
CQS values



Q1	Q2	Q3	Q4	Q5	Q6	Q7	Q8
86,5	91,6	94,1	95,5	96,3	92,2	91,6	92,2
Q9	Q10	Q11	Q12	Q13	Q14	Q15	
91,4	90,1	91,4	90,7	92,5	94,7	90,4	

TM30: 89,5

TM30 values, 16 binned values out of total of 99 values



C1	C2	C3	C4	C5	C6	C7	C8
91,9	91,7	87,8	84,4	88,0	91,1	82,1	91,0
C9	C10	C11	C12	C13	C14	C15	
88,2	88,5	91,1	88,8	91,3	93,3	90,3	

Color parameters

Color temperature	Color rendering index	Red component	Color fidelity	Color gamut	Color quality scale	Color coordinate cie 1931	Color coordinate cie 1931	Color coordinate	Color coordinate	Color deviation from black body
CCT	CRI	CRI R9	TM30 Rf	TM30 Rg	CQS	x	y	u	v	Δuv
3040 K	91,8	77,9	89,5	98,3	91,7	0,434	0,401	0,250	0,347	-0,0006



CLS LED BV
 info@cls-led.com
 www.cls-led.com

2021 CLS-LED BV. All rights reserved. Information subject to change without notice, CLS-LED BV and all affiliated companies disclaim liability for injury, damage direct or indirect loss, consequential or economic loss or any other loss occasioned by the use of, inability to use or reliance on the information contained in this document. No part of this document may be reproduced, in any form or by any means, without permission in writing from CLS-LED BV. Other legal information can be found in our General conditions, found on the back of your CLS-LED BV invoice, inside the CLS catalogue or on our website www.cls-led.com/voorwaarden.pdf

LM-79

Test Report

LM79-LINA-DF-3000K-80CM

TM30 details

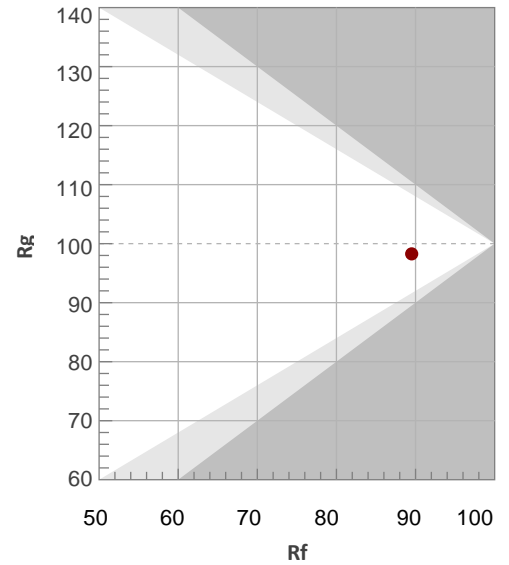
Rf 89,5

Fidelity index Rf

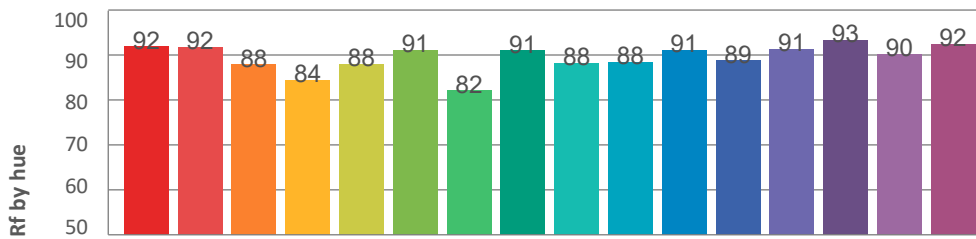
Rg 98,3

Gamut index Rg

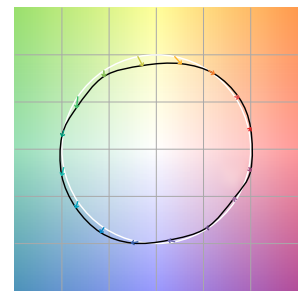
Hue Bin	R _f	Graphic shifts (%)	
		Chroma	Hue
1	92	2%	2%
2	92	3%	-3%
3	88	0%	-6%
4	84	-6%	-8%
5	88	-10%	-3%
6	91	-5%	3%
7	82	-5%	10%
8	91	1%	6%
9	88	4%	7%
10	88	5%	4%
11	91	6%	0%
12	89	3%	-6%
13	91	-3%	-6%
14	93	-1%	-2%
15	90	-3%	3%
16	92	2%	-3%



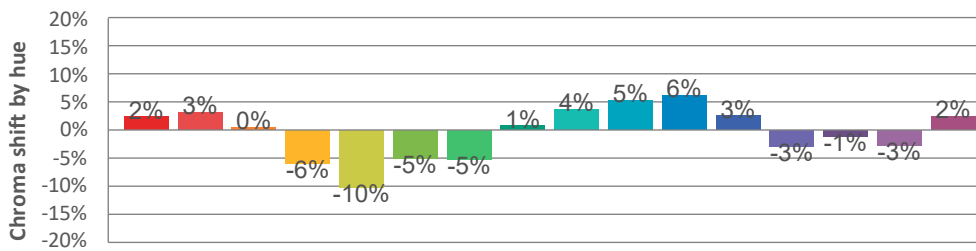
Hue binH



Color vector graphics



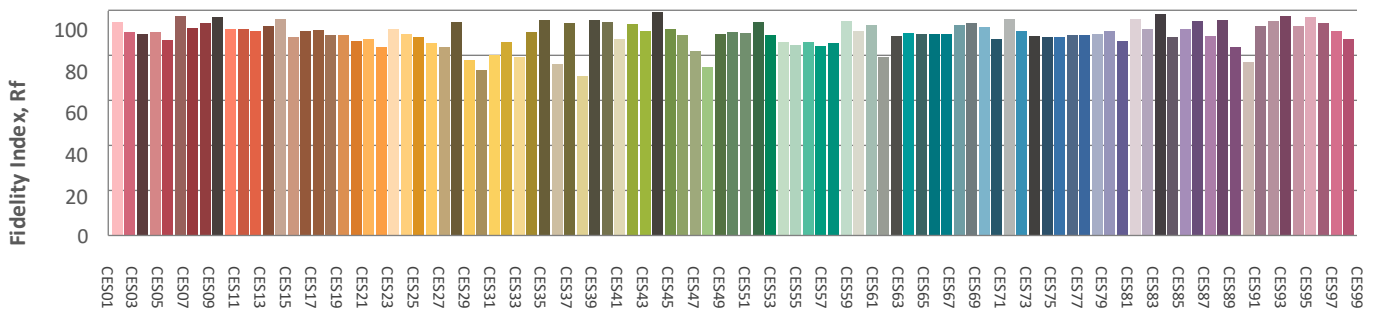
Hue bin



Color distortion graphics



Color Evaluation Sample



CLS LED BV
 info@cls-led.com
 www.cls-led.com

2021 CLS-LED BV. All rights reserved. Information subject to change without notice, CLS-LED BV and all affiliated companies disclaim liability for injury, damage direct or indirect loss, consequential or economic loss or any other loss occasioned by the use of, inability to use or reliance on the information contained in this document. No part of this document may be reproduced, in any form or by any means, without permission in writing from CLS-LED BV. Other legal information can be found in our General conditions, found on the back of your CLS-LED BV invoice, inside the CLS catalogue or on our website www.cls-led.com/voorwaarden.pdf

Glare Evaluation According to UGR

p Ceiling	70	70	50	50	30	70	70	50	50	30
p Walls	50	30	50	30	30	50	30	50	30	30
p Floor	20	20	20	20	20	20	20	20	20	20

Room size X Y	Viewing direction at right angles to lamp axis					Viewing direction parallel to lamp axis				
------------------	--	--	--	--	--	---	--	--	--	--

n/a	n/a	n/a	n/a	n/a	n/a	n/a	n/a	n/a	n/a	n/a
n/a	n/a	n/a	n/a	n/a	n/a	n/a	n/a	n/a	n/a	n/a
n/a	n/a	n/a	n/a	n/a	n/a	n/a	n/a	n/a	n/a	n/a
n/a	n/a	n/a	n/a	n/a	n/a	n/a	n/a	n/a	n/a	n/a
n/a	n/a	n/a	n/a	n/a	n/a	n/a	n/a	n/a	n/a	n/a
n/a	n/a	n/a	n/a	n/a	n/a	n/a	n/a	n/a	n/a	n/a

n/a	n/a	n/a	n/a	n/a	n/a	n/a	n/a	n/a	n/a	n/a
n/a	n/a	n/a	n/a	n/a	n/a	n/a	n/a	n/a	n/a	n/a
n/a	n/a	n/a	n/a	n/a	n/a	n/a	n/a	n/a	n/a	n/a
n/a	n/a	n/a	n/a	n/a	n/a	n/a	n/a	n/a	n/a	n/a
n/a	n/a	n/a	n/a	n/a	n/a	n/a	n/a	n/a	n/a	n/a
n/a	n/a	n/a	n/a	n/a	n/a	n/a	n/a	n/a	n/a	n/a

n/a	n/a	n/a	n/a	n/a	n/a	n/a	n/a	n/a	n/a	n/a
n/a	n/a	n/a	n/a	n/a	n/a	n/a	n/a	n/a	n/a	n/a
n/a	n/a	n/a	n/a	n/a	n/a	n/a	n/a	n/a	n/a	n/a
n/a	n/a	n/a	n/a	n/a	n/a	n/a	n/a	n/a	n/a	n/a

n/a	n/a	n/a	n/a	n/a	n/a	n/a	n/a	n/a	n/a	n/a
n/a	n/a	n/a	n/a	n/a	n/a	n/a	n/a	n/a	n/a	n/a
n/a	n/a	n/a	n/a	n/a	n/a	n/a	n/a	n/a	n/a	n/a

Variation of the observer position for the luminaire distance S

n/a	n/a	n/a
n/a	n/a	n/a
n/a	n/a	n/a

Standard table	n/a	n/a
Correction summand	n/a	n/a

Corrected glare indices referring to 1132lm total luminous flux



CLS LED BV
 info@cls-led.com
 www.cls-led.com

2021 CLS-LED BV. All rights reserved. Information subject to change without notice, CLS-LED BV and all affiliated companies disclaim liability for injury, damage direct or indirect loss, consequential or economic loss or any other loss occasioned by the use of, inability to use or reliance on the information contained in this document. No part of this document may be reproduced, in any form or by any means, without permission in writing from CLS-LED BV. Other legal information can be found in our General conditions, found on the back of your CLS-LED BV invoice, inside the CLS catalogue or on our website www.cls-led.com/voorwaarden.pdf