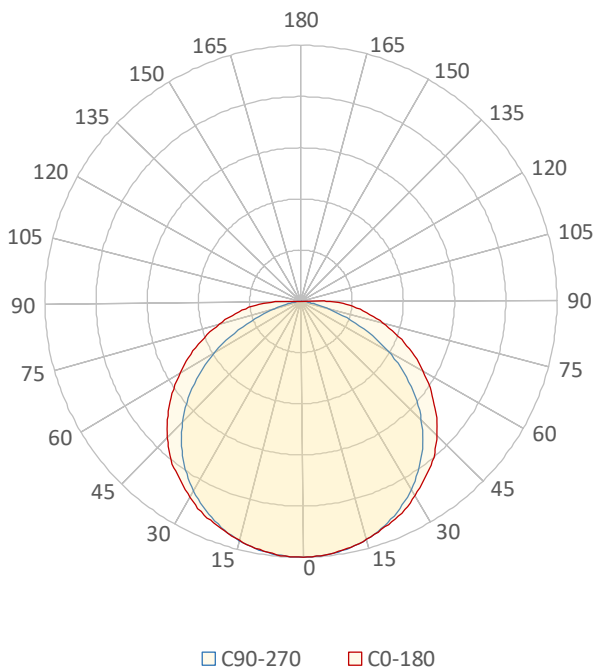


General Discription

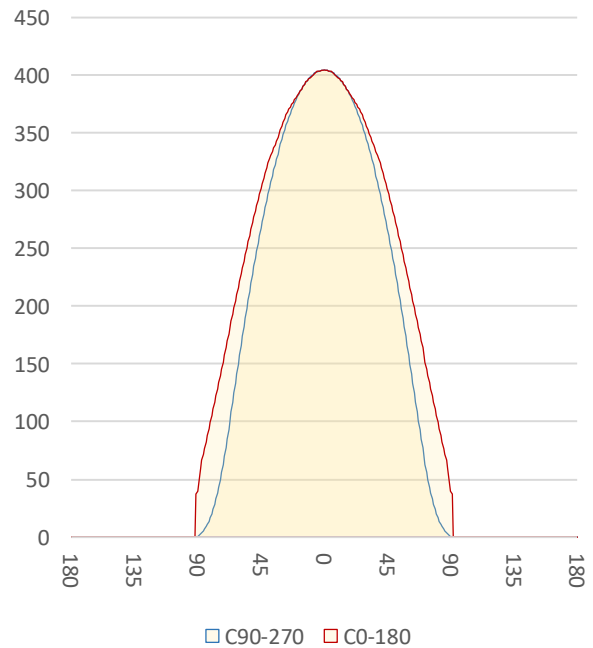
Item number	L-X-X-030-43-0
Date and time	25-6-2024 10:08:58
CCT (Kelvin)	4178 K
Beam angle	108,8°
Luminous flux	1242 lm
Efficiency	77 lm/watt
Weighted energy	16,2 kWh/1000h
Power factor	1,0
CRI (RA)	93,8
Fidelity index Rf	Rf 90,6
Gammut index Rg	Rg 97,5
Peak	405 cd



Polar diagram



Cartesian diagram



LM-79

Test Report

LM79-LINA-DF-4000K-80CM

Beam details	1m	2m	3m	4m	5m																			
Lux*	405 lx	101 lx	45 lx	25 lx	16 lx																			
*measured at center of beam																								
Footcandles*	37,6 fcd	9,4 fcd	4,2 fcd	2,3 fcd	1,5 fcd																			
Beam width (meter)	3,3 m	6,6 m	9,9 m	13,3 m	16,6 m																			
Beam width (Feet)	10,9 ft	21,8 ft	32,6 ft	43,5 ft	54,4 ft																			
Beam intensities																								
1m	2m	3m	4m	5m	6m	7m	8m	9m	10m	11m	12m	13m	14m	15m	16m	17m	18m	19m	20m					
405lx	101lx	45lx	25lx	16lx	11lx	8lx	6lx	5lx	4lx	3lx	3lx	2lx	2lx	2lx	2lx	1lx	1lx	1lx	1lx					
3,3ft	6,6ft	9,8ft	13,1ft	16,4ft	19,7ft	23ft	26,2ft	29,5ft	32,8ft	36,1ft	39,4ft	42,7ft	45,9ft	49,2ft	52,5ft	55,8ft	59,1ft	62,3ft	65,6ft					
37,6fcd	9,4fcd	4,2fcd	2,3fcd	1,5fcd	1fcd	0,8fcd	0,6fcd	0,5fcd	0,4fcd	0,3fcd	0,3fcd	0,2fcd	0,2fcd	0,2fcd	0,1fcd	0,1fcd	0,1fcd	0,1fcd	0,1fcd					
Intensities in 0° c-plane																								
0°	5°	10°	15°	20°	25°	30°	35°	40°	45°	50°	55°	60°	65°	70°	75°	80°	85°	90°	95°					
405	403	398	390	381	371	356	340	324	302	277	250	222	193	164	134	105	77	40	0					
100%	100%	98%	96%	94%	92%	88%	84%	80%	75%	69%	62%	55%	48%	41%	33%	26%	19%	10%	0%					
Intensities in 90° c-plane																								
0°	5°	10°	15°	20°	25°	30°	35°	40°	45°	50°	55°	60°	65°	70°	75°	80°	85°	90°	95°					
405	403	398	390	379	364	345	323	297	267	234	198	158	117	77	43	20	7	1	0					
100%	100%	98%	96%	94%	90%	85%	80%	73%	66%	58%	49%	39%	29%	19%	11%	5%	2%	0%	0%					
Intensities in 180° c-plane																								
0°	5°	10°	15°	20°	25°	30°	35°	40°	45°	50°	55°	60°	65°	70°	75°	80°	85°	90°	95°					
405	403	398	390	381	371	356	340	324	302	277	250	222	193	164	134	105	77	40	0					
100%	100%	98%	96%	94%	92%	88%	84%	80%	75%	69%	62%	55%	48%	41%	33%	26%	19%	10%	0%					
Intensities in 270° c-plane																								
0°	5°	10°	15°	20°	25°	30°	35°	40°	45°	50°	55°	60°	65°	70°	75°	80°	85°	90°	95°					
405	403	398	390	379	364	345	323	297	267	234	198	158	117	77	43	20	7	1	0					
100%	100%	98%	96%	94%	90%	85%	80%	73%	66%	58%	49%	39%	29%	19%	11%	5%	2%	0%	0%					
Beam angle 50%					Field angle 10%					Cutoff angle 2,5%					Intensity ratio in 120° cone					Intensity ratio in 90° cone				
117,8°					165,4°					263,5°					76,1%					51,2%				



CLS LED BV
 info@cls-led.com
 www.cls-led.com

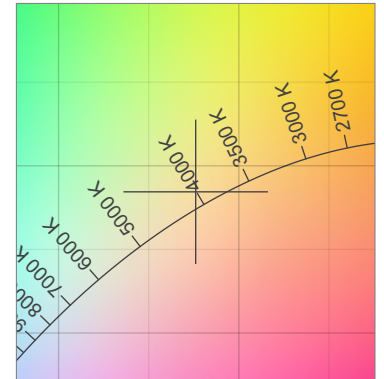
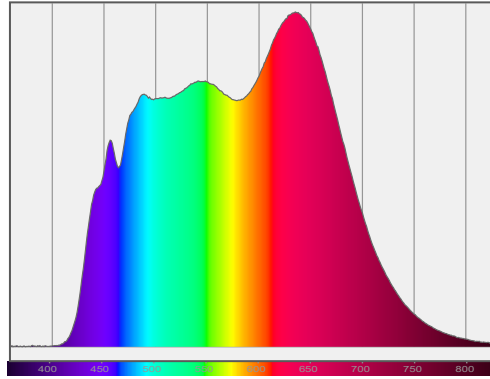
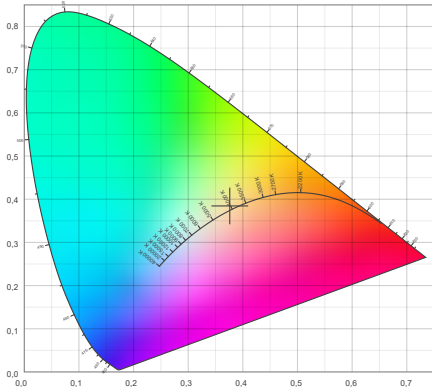
2021 CLS-LED BV. All rights reserved. Information subject to change without notice, CLS-LED BV and all affiliated companies disclaim liability for injury, damage direct or indirect loss, consequential or economic loss or any other loss occasioned by the use of, inability to use or reliance on the information contained in this document. No part of this document may be reproduced, in any form or by any means, without permission in writing from CLS-LED BV. Other legal information can be found in our General conditions, found on the back of your CLS-LED BV invoice, inside the CLS catalogue or on our website www.cls-led.com/voorwaarden.pdf

LM-79

Test Report

LM79-LINA-DF-4000K-80CM

Color details



CIE 1931

x: 0,376



Spectra

CIE 1931 ZOOM

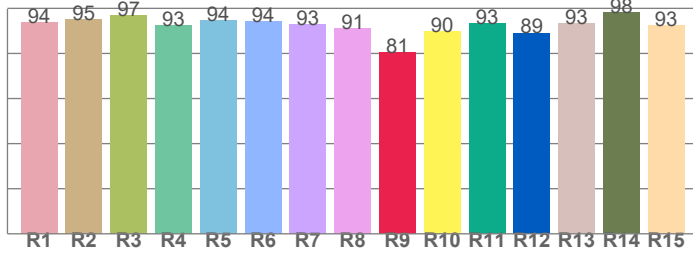
4178 K

y: 0,384

Δuv : 0,0049

CRI: 93,8 (R1-R8)

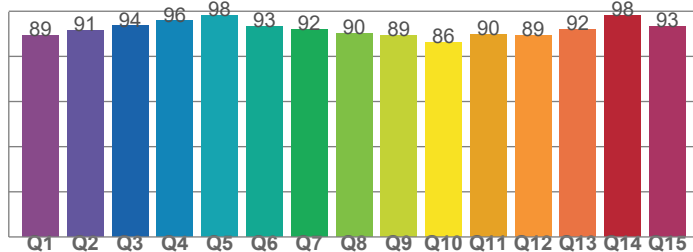
CRI values, R1-R8 are used to calculate final CRI value



R1	R2	R3	R4	R5	R6	R7	R8
93,7	95,0	96,7	92,5	94,5	94,2	93,0	91,1
R9	R10	R11	R12	R13	R14	R15	
80,7	89,9	93,4	89,2	93,3	98,1	92,5	

CQS: 91,4

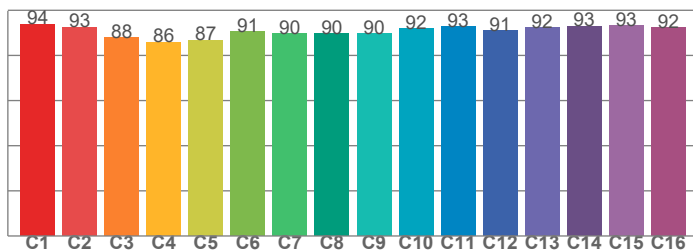
CQS values



Q1	Q2	Q3	Q4	Q5	Q6	Q7	Q8
89,5	91,5	93,5	95,7	98,0	93,2	92,1	90,0
Q9	Q10	Q11	Q12	Q13	Q14	Q15	
89,1	86,1	89,6	89,4	91,8	98,0	93,1	

TM30: 90,6

TM30 values, 16 binned values out of total of 99 values



C1	C2	C3	C4	C5	C6	C7	C8
93,9	92,5	87,8	85,9	86,7	90,6	89,5	89,6
C9	C10	C11	C12	C13	C14	C15	
89,7	91,9	92,7	90,8	92,5	92,9	93,3	

Color parameters

Color temperature	Color rendering index	Red component	Color fidelity	Color gamut	Color quality scale	Color coordinate cie 1931	Color coordinate cie 1931	Color coordinate	Color coordinate	Color deviation from black body
CCT	CRI	CRI R9	TM30 Rf	TM30 Rg	CQS	x	y	u	v	Δuv
4178 K	93,8	80,7	90,6	97,5	91,4	0,376	0,384	0,219	0,336	0,0049



CLS LED BV
info@cls-led.com
www.cls-led.com

2021 CLS-LED BV. All rights reserved. Information subject to change without notice, CLS-LED BV and all affiliated companies disclaim liability for injury, damage direct or indirect loss, consequential or economic loss or any other loss occasioned by the use of, inability to use or reliance on the information contained in this document. No part of this document may be reproduced, in any form or by any means, without permission in writing from CLS-LED BV. Other legal information can be found in our General conditions, found on the back of your CLS-LED BV invoice, inside the CLS catalogue or on our website www.cls-led.com/voorwaarden.pdf

LM-79

Test Report

LM79-LINA-DF-4000K-80CM

TM30 details

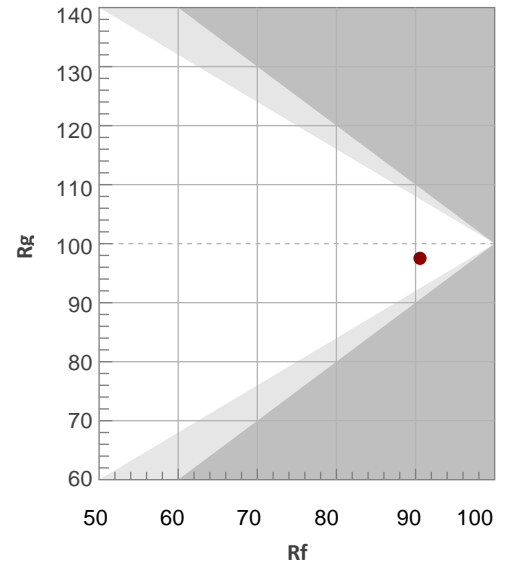
Rf 90,6

Fidelity index Rf

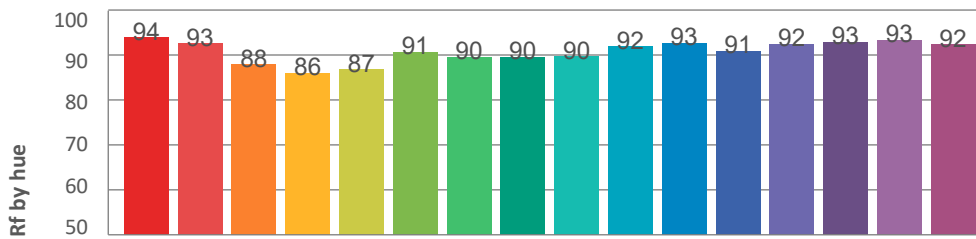
Rg 97,5

Gamut index Rg

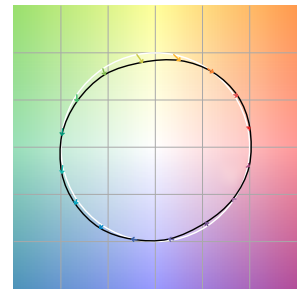
Hue Bin	R _f	Graphic shifts (%)	
		Chroma	Hue
1	94	2%	1%
2	93	3%	-3%
3	88	0%	-7%
4	86	-5%	-8%
5	87	-9%	-4%
6	91	-6%	2%
7	90	-4%	6%
8	90	0%	7%
9	90	3%	7%
10	92	4%	3%
11	93	4%	-1%
12	91	0%	-5%
13	92	-2%	-5%
14	93	-4%	0%
15	93	-1%	0%
16	92	1%	-1%



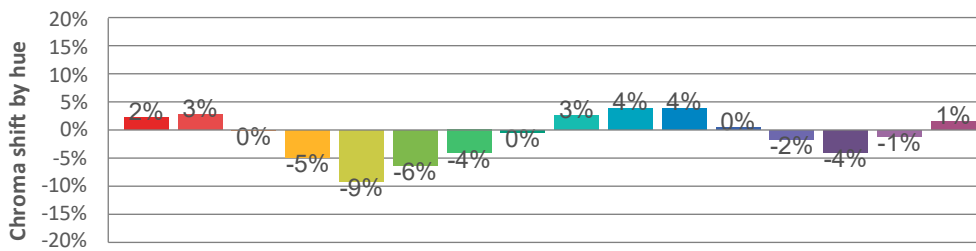
Hue binH



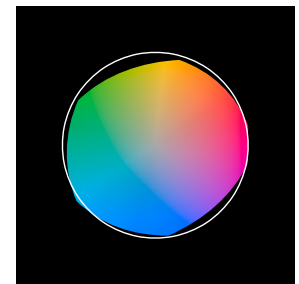
Color vector graphics



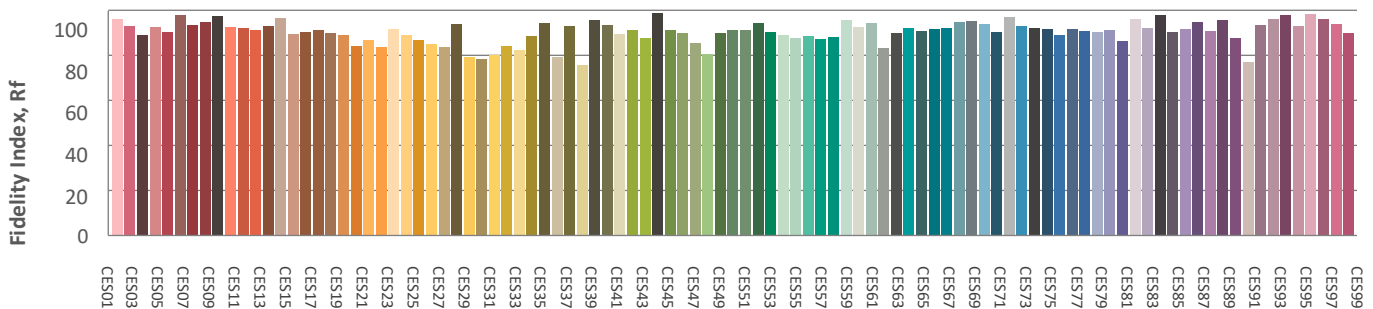
Hue bin



Color distortion graphics



Color Evaluation Sample



CLS LED BV
 info@cls-led.com
 www.cls-led.com

2021 CLS-LED BV. All rights reserved. Information subject to change without notice, CLS-LED BV and all affiliated companies disclaim liability for injury, damage direct or indirect loss, consequential or economic loss or any other loss occasioned by the use of, inability to use or reliance on the information contained in this document. No part of this document may be reproduced, in any form or by any means, without permission in writing from CLS-LED BV. Other legal information can be found in our General conditions, found on the back of your CLS-LED BV invoice, inside the CLS catalogue or on our website www.cls-led.com/voorwaarden.pdf

LM-79

Test Report

LM79-LINA-DF-4000K-80CM

Glare Evaluation According to UGR

p Ceiling	70	70	50	50	30	70	70	50	50	30
p Walls	50	30	50	30	30	50	30	50	30	30
p Floor	20	20	20	20	20	20	20	20	20	20
Room size X Y	Viewing direction at right angles to lamp axis					Viewing direction parallel to lamp axis				
n/a	n/a	n/a	n/a	n/a	n/a	n/a	n/a	n/a	n/a	n/a
n/a	n/a	n/a	n/a	n/a	n/a	n/a	n/a	n/a	n/a	n/a
n/a	n/a	n/a	n/a	n/a	n/a	n/a	n/a	n/a	n/a	n/a
n/a	n/a	n/a	n/a	n/a	n/a	n/a	n/a	n/a	n/a	n/a
n/a	n/a	n/a	n/a	n/a	n/a	n/a	n/a	n/a	n/a	n/a
n/a	n/a	n/a	n/a	n/a	n/a	n/a	n/a	n/a	n/a	n/a
n/a	n/a	n/a	n/a	n/a	n/a	n/a	n/a	n/a	n/a	n/a
n/a	n/a	n/a	n/a	n/a	n/a	n/a	n/a	n/a	n/a	n/a
n/a	n/a	n/a	n/a	n/a	n/a	n/a	n/a	n/a	n/a	n/a
n/a	n/a	n/a	n/a	n/a	n/a	n/a	n/a	n/a	n/a	n/a
n/a	n/a	n/a	n/a	n/a	n/a	n/a	n/a	n/a	n/a	n/a
n/a	n/a	n/a	n/a	n/a	n/a	n/a	n/a	n/a	n/a	n/a
n/a	n/a	n/a	n/a	n/a	n/a	n/a	n/a	n/a	n/a	n/a
n/a	n/a	n/a	n/a	n/a	n/a	n/a	n/a	n/a	n/a	n/a
n/a	n/a	n/a	n/a	n/a	n/a	n/a	n/a	n/a	n/a	n/a
n/a	n/a	n/a	n/a	n/a	n/a	n/a	n/a	n/a	n/a	n/a
n/a	n/a	n/a	n/a	n/a	n/a	n/a	n/a	n/a	n/a	n/a
n/a	n/a	n/a	n/a	n/a	n/a	n/a	n/a	n/a	n/a	n/a
Variation of the observer position for the luminaire distance S										
n/a	n/a					n/a				
n/a	n/a					n/a				
n/a	n/a					n/a				
Standard table	n/a					n/a				
Correction summand	n/a					n/a				
Corrected glare indices referring to 1242lm total luminous flux										



CLS LED BV
 info@cls-led.com
 www.cls-led.com

2021 CLS-LED BV. All rights reserved. Information subject to change without notice, CLS-LED BV and all affiliated companies disclaim liability for injury, damage direct or indirect loss, consequential or economic loss or any other loss occasioned by the use of, inability to use or reliance on the information contained in this document. No part of this document may be reproduced, in any form or by any means, without permission in writing from CLS-LED BV. Other legal information can be found in our General conditions, found on the back of your CLS-LED BV invoice, inside the CLS catalogue or on our website www.cls-led.com/voorwaarden.pdf