

LM-79

Test Report

LM79-REVO-COMPACT-5000K-CRI80-DEG12

General Discription

Item number	RC-1-X-06-1
Date and time	5-8-2016 12:32:11
CCT (Kelvin)	4793 K
Beam angle	16,9°
Luminous flux	549 lm
Efficiency	54 lm/watt
Weighted energy	10,1 kWh/1000h
Power factor	0,95
CRI (RA)	86,4
Fidelity index Rf	Rf 85,7
Gammut index Rg	Rg 97,4



CLS LED BV
info@cls-led.com
www.cls-led.com

2017 CLS-LED BV. All rights reserved. Information subject to change without notice, CLS-LED BV and all affiliated companies disclaim liability for injury, damage direct or indirect loss, consequential or economic loss or any other loss occasioned by the use of, inability to use or reliance on the information contained in this document. No part of this document may be reproduced, in any form or by any means, without permission in writing from CLS-LED BV. Other legal information can be found in our General conditions, found on the back of your CLS-LED BV invoice, inside the CLS catalogue or on our website www.cls-led.com/voorwaarden.pdf

LM-79

Test Report

LM79-REVO-COMPACT-5000K-CRI80-DEG12

Beam details	1m	2m	3m	4m	5m														
Lux*	4598 lx	1149 lx	511 lx	287 lx	184 lx														
*measured at center of beam																			
Footcandles*	427,1 fcd	106,8 fcd	47,5 fcd	26,7 fcd	17,1 fcd														
Beam width (meter)	0,3 m	0,6 m	0,9 m	1,2 m	1,5 m														
Beam width (Feet)	1 ft	1,9 ft	2,9 ft	3,9 ft	4,9 ft														
Beam intensities																			
1m	2m	3m	4m	5m	6m	7m	8m	9m	10m	11m	12m	13m	14m	15m	16m	17m	18m	19m	20m
4598lx	1149lx	511lx	287lx	184lx	128lx	94lx	72lx	57lx	46lx	38lx	32lx	27lx	23lx	20lx	18lx	16lx	14lx	13lx	11lx
3,3ft	6,6ft	9,8ft	13,1ft	16,4ft	19,7ft	23ft	26,2ft	29,5ft	32,8ft	36,1ft	39,4ft	42,7ft	45,9ft	49,2ft	52,5ft	55,8ft	59,1ft	62,3ft	65,6ft
427,1fcd	106,8fcd	47,5fcd	26,7fcd	17,1fcd	11,9fcd	8,7fcd	6,7fcd	5,3fcd	4,3fcd	3,5fcd	3fcd	2,5fcd	2,2fcd	1,9fcd	1,7fcd	1,5fcd	1,3fcd	1,2fcd	1,1fcd
Intensities in 0° c-plane																			
0°	1°	2°	3°	4°	5°	6°	7°	8°	9°	10°	11°	12°	13°	14°	15°	16°	17°	18°	19°
4598	4598	4568	4345	3970	3572	3175	2780	2402	2077	1759	1440	1138	919	779	647	516	392	308	259
100%	100%	99%	95%	86%	78%	69%	60%	52%	45%	38%	31%	25%	20%	17%	14%	11%	9%	7%	6%
Intensities in 90° c-plane																			
0°	1°	2°	3°	4°	5°	6°	7°	8°	9°	10°	11°	12°	13°	14°	15°	16°	17°	18°	19°
4598	4598	4598	4452	4111	3709	3307	2905	2517	2143	1854	1580	1306	1082	906	730	563	460	380	322
100%	100%	100%	97%	89%	81%	72%	63%	55%	47%	40%	34%	28%	24%	20%	16%	12%	10%	8%	7%
Intensities in 180° c-plane																			
0°	1°	2°	3°	4°	5°	6°	7°	8°	9°	10°	11°	12°	13°	14°	15°	16°	17°	18°	19°
4598	4598	4568	4345	3970	3572	3175	2780	2402	2077	1759	1440	1138	919	779	647	516	392	308	259
100%	100%	99%	95%	86%	78%	69%	60%	52%	45%	38%	31%	25%	20%	17%	14%	11%	9%	7%	6%
Intensities in 270° c-plane																			
0°	1°	2°	3°	4°	5°	6°	7°	8°	9°	10°	11°	12°	13°	14°	15°	16°	17°	18°	19°
4598	4598	4598	4452	4111	3709	3307	2905	2517	2143	1854	1580	1306	1082	906	730	563	460	380	322
100%	100%	100%	97%	89%	81%	72%	63%	55%	47%	40%	34%	28%	24%	20%	16%	12%	10%	8%	7%
Beam angle 50%		Field angle 10%				Cutoff angle 2,5%				Intensity ratio in 120° cone				Intensity ratio in 90° cone					
16,9°		33,5°				{C_ANG}°				98,6%				97,6%					



CLS LED BV
 info@cls-led.com
 www.cls-led.com

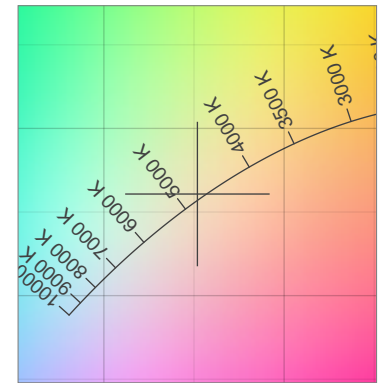
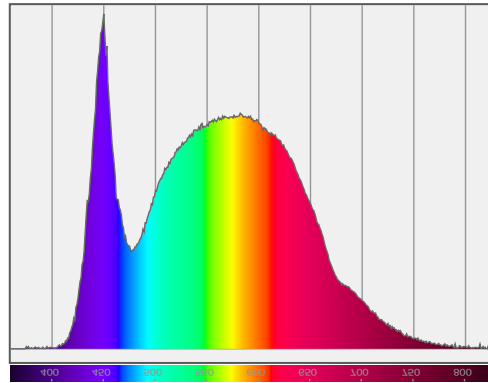
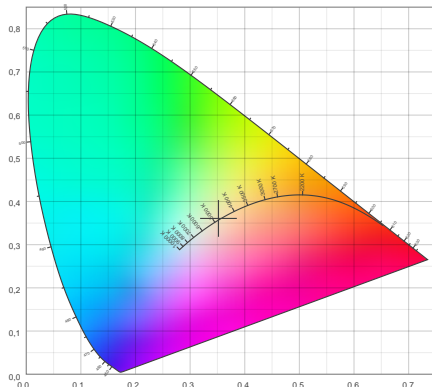
2017 CLS-LED BV. All rights reserved. Information subject to change without notice, CLS-LED BV and all affiliated companies disclaim liability for injury, damage direct or indirect loss, consequential or economic loss or any other loss occasioned by the use of, inability to use or reliance on the information contained in this document. No part of this document may be reproduced, in any form or by any means, without permission in writing from CLS-LED BV. Other legal information can be found in our General conditions, found on the back of your CLS-LED BV invoice, inside the CLS catalogue or on our website www.cls-led.com/voorwaarden.pdf

LM-79

Test Report

LM79-REVO-COMPACT-5000K-CRI80-DEG12

Color details



CIE 1931

x: 0,352



Spectra

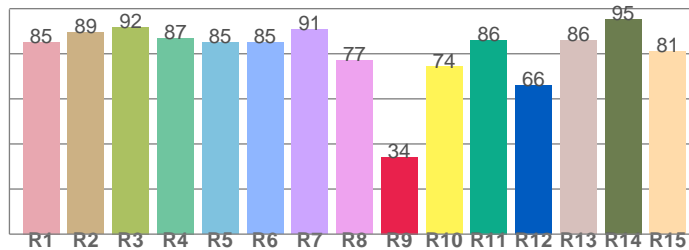
CIE 1931 ZOOM

4793 K

y: 0,361

Δuv : 0,0019

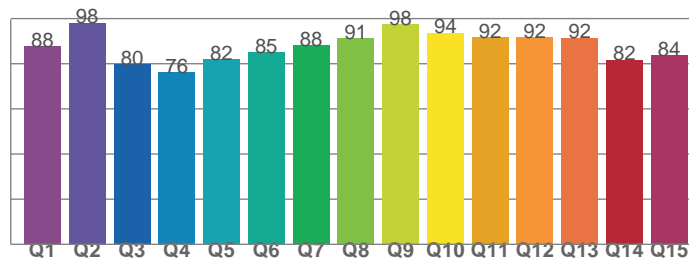
CRI: 86,4 (R1-R8)



CRI values, R1-R8 are used to calculate final CRI value

R1	R2	R3	R4	R5	R6	R7	R8
85,2	89,3	91,9	87,0	85,1	84,9	90,9	77,0
R9	R10	R11	R12	R13	R14	R15	
34,2	74,2	86,1	66,2	86,0	95,5	81,0	

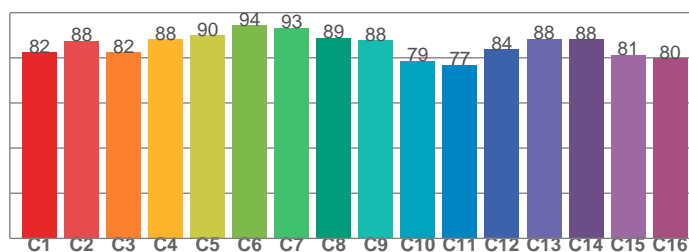
CQS: 86,5



CQS values

Q1	Q2	Q3	Q4	Q5	Q6	Q7	Q8
87,8	98,1	79,8	76,3	81,9	84,9	88,0	91,4
Q9	Q10	Q11	Q12	Q13	Q14	Q15	
97,5	93,7	91,7	91,9	91,5	81,7	83,9	

TM30: 85,7



TM30 values, 16 binned values out of total of 99 values

C1	C2	C3	C4	C5	C6	C7	C8
82,3	87,6	82,4	88,2	89,9	94,4	93,2	88,8
C9	C10	C11	C12	C13	C14	C15	
87,6	78,7	76,9	83,6	88,4	88,1	81,4	

Color parameters

Color temperature	Color rendering index	Red component	Color fidelity	Color gamut	Color quality scale	Color coordinate cie 1931	Color coordinate cie 1931	Color coordinate	Color coordinate	Color deviation from black body
CCT	CRI	CRI R9	TM30 Rf	TM30 Rg	CQS	x	y	u	v	Δuv
4793 K	86,4	34,2	85,7	97,4	86,5	0,352	0,361	0,212	0,327	0,0019



CLS LED BV
 info@cls-led.com
 www.cls-led.com

2017 CLS-LED BV. All rights reserved. Information subject to change without notice, CLS-LED BV and all affiliated companies disclaim liability for injury, damage direct or indirect loss, consequential or economic loss or any other loss occasioned by the use of, inability to use or reliance on the information contained in this document. No part of this document may be reproduced, in any form or by any means, without permission in writing from CLS-LED BV. Other legal information can be found in our General conditions, found on the back of your CLS-LED BV invoice, inside the CLS catalogue or on our website www.cls-led.com/voorwaarden.pdf

LM-79

Test Report

LM79-REVO-COMPACT-5000K-CRI80-DEG12

TM30 details

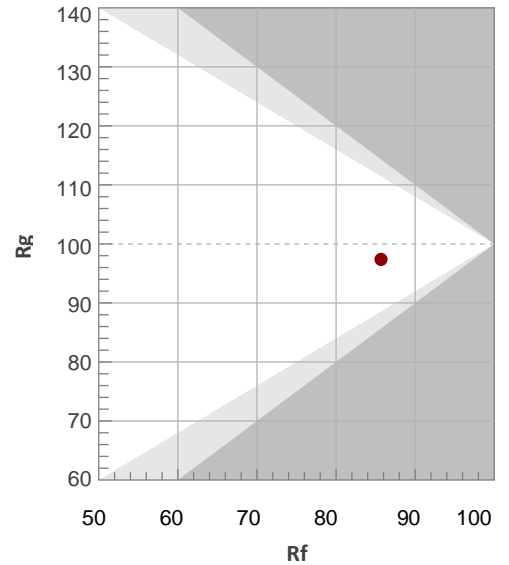
Rf 85,7

Fidelity index Rf

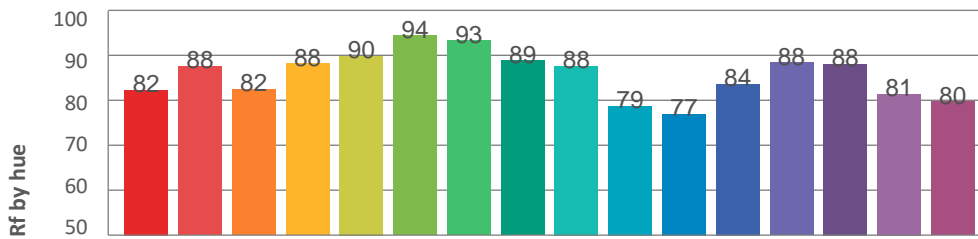
Rg 97,4

Gamut index Rg

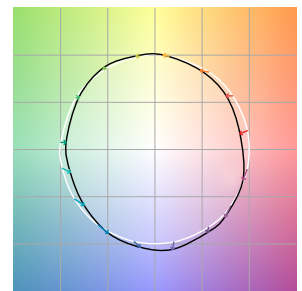
Hue Bin	R _f	Graphic shifts (%)	
		Chroma	Hue
1	82	-8%	-1%
2	88	-6%	4%
3	82	-3%	8%
4	88	0%	6%
5	90	1%	4%
6	94	2%	-1%
7	93	-2%	-3%
8	89	-6%	-1%
9	88	-7%	6%
10	79	-5%	11%
11	77	1%	13%
12	84	5%	7%
13	88	7%	-3%
14	88	4%	-4%
15	81	1%	-12%
16	80	-2%	-12%



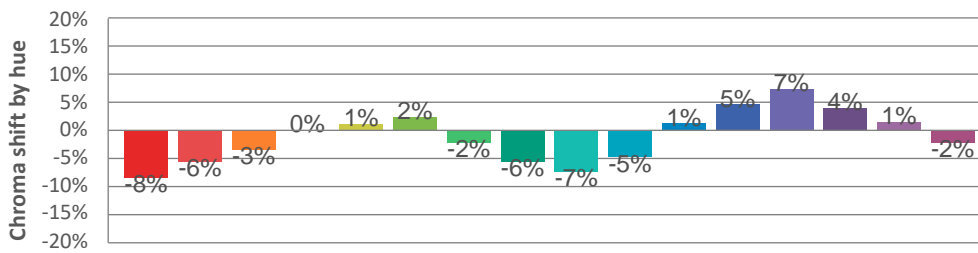
Hue binH



Color vector graphics



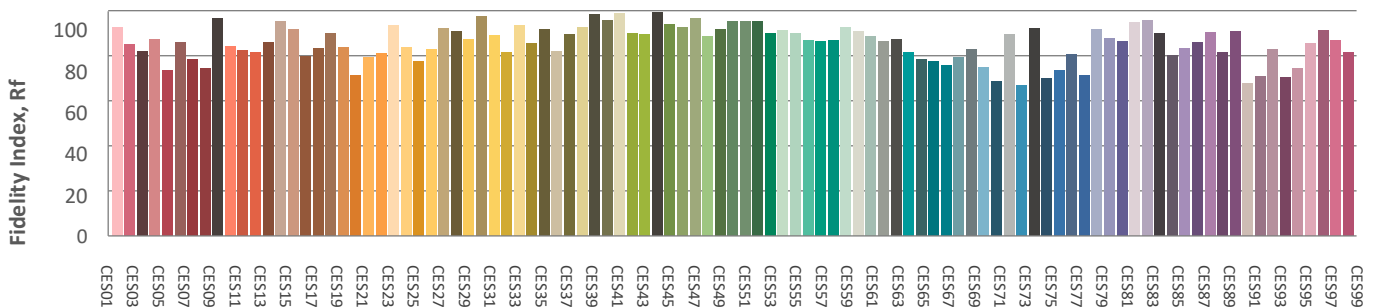
Hue bin



Color distortion graphics



Color Evaluation Sample



CLS LED BV
info@cls-led.com
www.cls-led.com

2017 CLS-LED BV. All rights reserved. Information subject to change without notice, CLS-LED BV and all affiliated companies disclaim liability for injury, damage direct or indirect loss, consequential or economic loss or any other loss occasioned by the use of, inability to use or reliance on the information contained in this document. No part of this document may be reproduced, in any form or by any means, without permission in writing from CLS-LED BV. Other legal information can be found in our General conditions, found on the back of your CLS-LED BV invoice, inside the CLS catalogue or on our website www.cls-led.com/voorwaarden.pdf

Glare Evaluation According to UGR

p Ceiling	70	70	50	50	30	70	70	50	50	30	
p Walls	50	30	50	30	30	50	30	50	30	30	
p Floor	20	20	20	20	20	20	20	20	20	20	
Room size X Y	Viewing direction at right angles to lamp axis					Viewing direction parallel to lamp axis					
2H	2H	6,5	7,1	6,7	7,3	7,5	6,2	6,9	6,5	7,1	7,3
	3H	7,0	7,6	7,3	7,9	8,1	6,9	7,5	7,2	7,7	7,9
	4H	7,2	7,8	7,6	8,1	8,3	7,2	7,8	7,5	8,0	8,3
	6H	7,5	8,0	7,8	8,3	8,6	7,4	8,0	7,8	8,2	8,5
	8H	7,6	8,1	7,9	8,4	8,7	7,6	8,1	7,9	8,4	8,7
	12H	7,7	8,2	8,1	8,5	8,8	7,7	8,2	8,1	8,5	8,8
4H	2H	6,7	7,3	7,0	7,5	7,8	6,5	7,1	6,8	7,3	7,6
	3H	7,4	7,9	7,8	8,2	8,5	7,3	7,8	7,7	8,1	8,4
	4H	7,8	8,2	8,1	8,5	8,9	7,8	8,2	8,1	8,5	8,9
	6H	8,1	8,4	8,5	8,8	9,2	8,1	8,5	8,5	8,8	9,2
	8H	8,3	8,6	8,7	9,0	9,4	8,3	8,6	8,7	9,0	9,4
	12H	8,5	8,8	9,0	9,2	9,6	8,6	8,8	9,0	9,3	9,7
8H	4H	7,9	8,2	8,3	8,6	9,0	7,9	8,2	8,3	8,6	9,0
	6H	8,3	8,5	8,8	9,0	9,4	8,4	8,6	8,8	9,0	9,5
	8H	8,6	8,8	9,1	9,2	9,7	8,7	8,9	9,1	9,3	9,8
	12H	9,0	9,1	9,5	9,6	10,1	9,1	9,2	9,6	9,7	10,2
12H	4H	7,9	8,1	8,3	8,5	9,0	7,9	8,1	8,3	8,5	9,0
	6H	8,4	8,6	8,8	9,0	9,5	8,4	8,6	8,9	9,0	9,5
	8H	8,7	8,9	9,2	9,3	9,8	8,8	8,9	9,3	9,4	9,9

Variation of the observer position for the luminaire distance S

S = 1,0H	+1,0 / -0,7	+1,0 / -0,7
S = 1,5H	+2,3 / -1,1	+2,2 / -1,1
S = 2,0H	+3,6 / -1,8	+3,6 / -1,7
Standard table	BK03	BK04
Correction summand	-9,3	-9,0

Corrected glare indices referring to 549lm total luminous flux

