


LM-79

Test Report

LM79-REVO-COMPACT-INGROUND-2700K-CRI80-DEG8

General Discription

Item number	RC-I-2-04-5	
Date and time	5-8-2016 11:04:34	
CCT (Kelvin)	2704 K	
Beam angle	11,9°	
Luminous flux	668 lm	
Efficiency	66 lm/watt	
Weighted energy	10,1 kWh/1000h	
Power factor	0,95	
CRI (RA)	83,5	
Fidelity index Rf	Rf 84,0	
Gammut index Rg	Rg 97,2	



CLS LED BV
info@cls-led.com
www.cls-led.com

2017 CLS-LED BV. All rights reserved. Information subject to change without notice, CLS-LED BV and all affiliated companies disclaim liability for injury, damage direct or indirect loss, consequential or economic loss or any other loss occasioned by the use of, inability to use or reliance on the information contained in this document. No part of this document may be reproduced, in any form or by any means, without permission in writing from CLS-LED BV. Other legal information can be found in our General conditions, found on the back of your CLS-LED BV invoice, inside the CLS catalogue or on our website www.cls-led.com/voorwaarden.pdf

LM-79

Test Report

LM79-REVO-COMPACT-INGROUND-2700K-CRI80-DEG8

Beam details	1m	2m	3m	4m	5m														
Lux*	9632 lx	2408 lx	1070 lx	602 lx	385 lx														
*measured at center of beam																			
Footcandles*	894,9 fcd	223,7 fcd	99,4 fcd	55,9 fcd	35,8 fcd														
Beam width (meter)	0,2 m	0,4 m	0,6 m	0,8 m	1 m														
Beam width (Feet)	0,7 ft	1,4 ft	2,1 ft	2,7 ft	3,4 ft														
Beam intensities																			
1m	2m	3m	4m	5m	6m	7m	8m	9m	10m	11m	12m	13m	14m	15m	16m	17m	18m	19m	20m
9632lx	2408lx	1070lx	602lx	385lx	268lx	197lx	151lx	119lx	96lx	80lx	67lx	57lx	49lx	43lx	38lx	33lx	30lx	27lx	24lx
3,3ft	6,6ft	9,8ft	13,1ft	16,4ft	19,7ft	23ft	26,2ft	29,5ft	32,8ft	36,1ft	39,4ft	42,7ft	45,9ft	49,2ft	52,5ft	55,8ft	59,1ft	62,3ft	65,6ft
894,9fcd	223,7fcd	99,4fcd	55,9fcd	35,8fcd	24,9fcd	18,3fcd	14fcd	11fcd	8,9fcd	7,4fcd	6,2fcd	5,3fcd	4,6fcd	4fcd	3,5fcd	3,1fcd	2,8fcd	2,5fcd	2,2fcd
Intensities in 0° c-plane																			
0°	1°	2°	3°	4°	5°	6°	7°	8°	9°	10°	11°	12°	13°	14°	15°	16°	17°	18°	19°
9632	8823	7973	7123	6273	5434	4720	4006	3291	2577	1940	1640	1341	1042	742	502	424	347	269	191
100%	92%	83%	74%	65%	56%	49%	42%	34%	27%	20%	17%	14%	11%	8%	5%	4%	4%	3%	2%
Intensities in 90° c-plane																			
0°	1°	2°	3°	4°	5°	6°	7°	8°	9°	10°	11°	12°	13°	14°	15°	16°	17°	18°	19°
9632	9224	8347	7469	6592	5697	4872	4110	3347	2585	2007	1641	1346	1050	754	553	446	364	282	200
100%	96%	87%	78%	68%	59%	51%	43%	35%	27%	21%	17%	14%	11%	8%	6%	5%	4%	3%	2%
Intensities in 180° c-plane																			
0°	1°	2°	3°	4°	5°	6°	7°	8°	9°	10°	11°	12°	13°	14°	15°	16°	17°	18°	19°
9632	8823	7973	7123	6273	5434	4720	4006	3291	2577	1940	1640	1341	1042	742	502	424	347	269	191
100%	92%	83%	74%	65%	56%	49%	42%	34%	27%	20%	17%	14%	11%	8%	5%	4%	4%	3%	2%
Intensities in 270° c-plane																			
0°	1°	2°	3°	4°	5°	6°	7°	8°	9°	10°	11°	12°	13°	14°	15°	16°	17°	18°	19°
9632	9224	8347	7469	6592	5697	4872	4110	3347	2585	2007	1641	1346	1050	754	553	446	364	282	200
100%	96%	87%	78%	68%	59%	51%	43%	35%	27%	21%	17%	14%	11%	8%	6%	5%	4%	3%	2%
Beam angle 50%		Field angle 10%				Cutoff angle 2,5%				Intensity ratio in 120° cone				Intensity ratio in 90° cone					
11,9°		26,6°				{C_ANG}°				98,9%				98,0%					



CLS LED BV
 info@cls-led.com
 www.cls-led.com

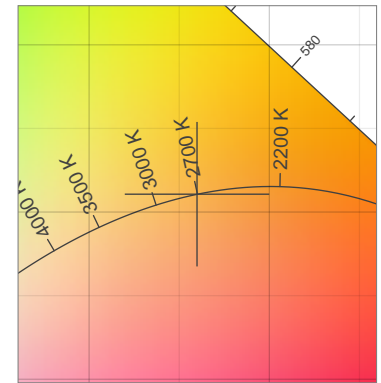
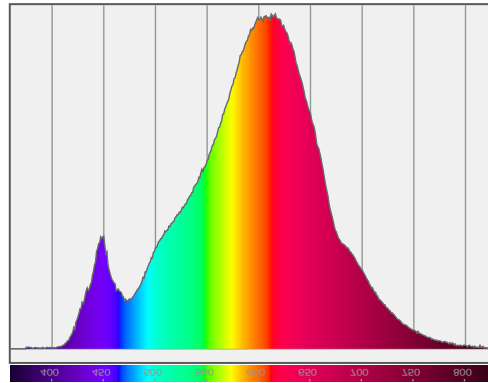
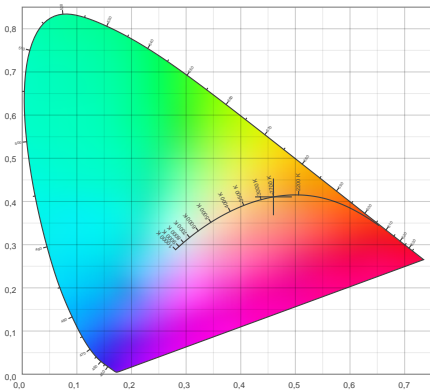
2017 CLS-LED BV. All rights reserved. Information subject to change without notice, CLS-LED BV and all affiliated companies disclaim liability for injury, damage direct or indirect loss, consequential or economic loss or any other loss occasioned by the use of, inability to use or reliance on the information contained in this document. No part of this document may be reproduced, in any form or by any means, without permission in writing from CLS-LED BV. Other legal information can be found in our General conditions, found on the back of your CLS-LED BV invoice, inside the CLS catalogue or on our website www.cls-led.com/voorwaarden.pdf

LM-79

Test Report

LM79-REVO-COMPACT-INGROUND-2700K-CRI80-DEG8

Color details



CIE 1931

x: 0,460



Spectra

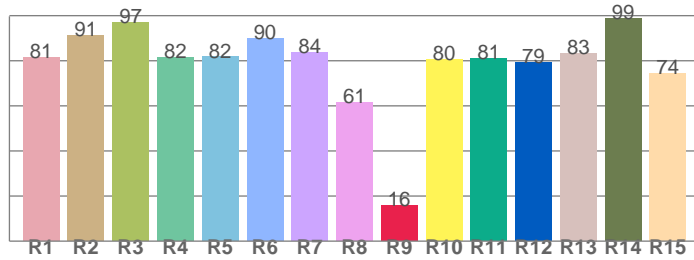
CIE 1931 ZOOM

2704 K

y: 0,411

Δuv : 0,0002

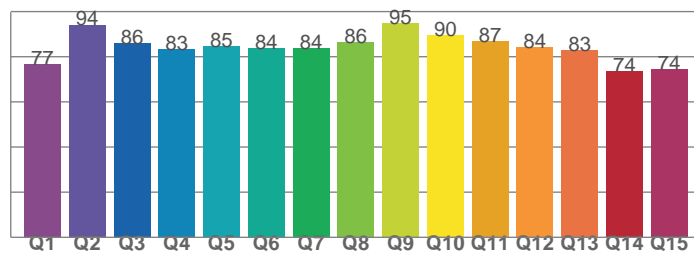
CRI: 83,5 (R1-R8)



CRI values, R1-R8 are used to calculate final CRI value

R1	R2	R3	R4	R5	R6	R7	R8
81,5	91,2	97,0	81,6	81,7	90,0	83,6	61,4
R9	R10	R11	R12	R13	R14	R15	
15,8	80,5	80,9	79,2	83,5	98,9	74,3	

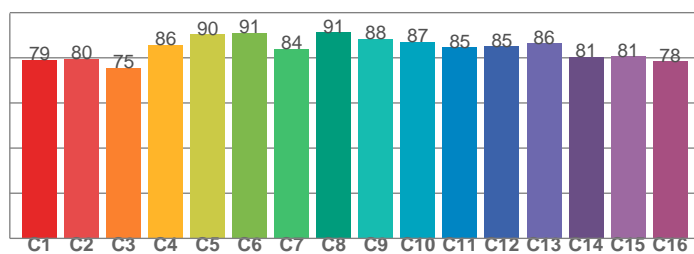
CQS: 83,1



CQS values

Q1	Q2	Q3	Q4	Q5	Q6	Q7	Q8
76,8	94,2	86,1	83,5	84,5	83,8	83,7	86,4
Q9	Q10	Q11	Q12	Q13	Q14	Q15	
94,7	89,7	86,7	84,1	83,0	73,5	74,4	

TM30: 84,0



TM30 values, 16 binned values out of total of 99 values

C1	C2	C3	C4	C5	C6	C7	C8
79,2	79,6	75,4	85,8	90,3	91,0	83,9	91,2
C9	C10	C11	C12	C13	C14	C15	
88,4	86,9	84,6	85,1	86,4	80,5	80,7	

Color parameters

Color temperature	Color rendering index	Red component	Color fidelity	Color gamut	Color quality scale	Color coordinate cie 1931	Color coordinate cie 1931	Color coordinate	Color coordinate	Color deviation from black body
CCT	CRI	CRI R9	TM30 Rf	TM30 Rg	CQS	x	y	u	v	Δuv
2704 K	83,5	15,8	84,0	97,2	83,1	0,460	0,411	0,262	0,352	0,0002



CLS LED BV
 info@cls-led.com
 www.cls-led.com

2017 CLS-LED BV. All rights reserved. Information subject to change without notice, CLS-LED BV and all affiliated companies disclaim liability for injury, damage direct or indirect loss, consequential or economic loss or any other loss occasioned by the use of, inability to use or reliance on the information contained in this document. No part of this document may be reproduced, in any form or by any means, without permission in writing from CLS-LED BV. Other legal information can be found in our General conditions, found on the back of your CLS-LED BV invoice, inside the CLS catalogue or on our website www.cls-led.com/voorwaarden.pdf

LM-79

Test Report

LM79-REVO-COMPACT-INGROUND-2700K-CRI80-DEG8

TM30 details

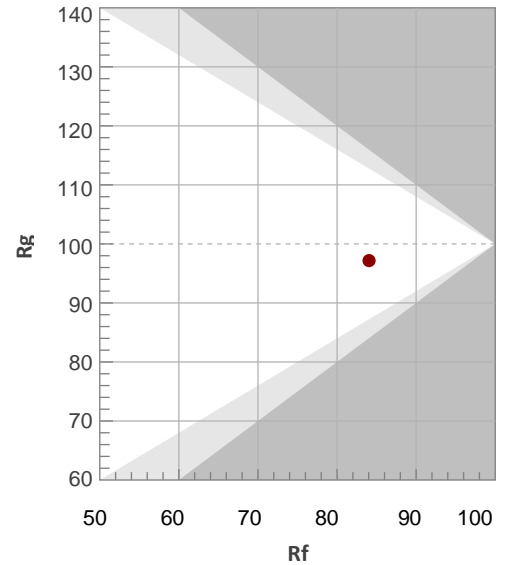
Rf 84,0

Fidelity index Rf

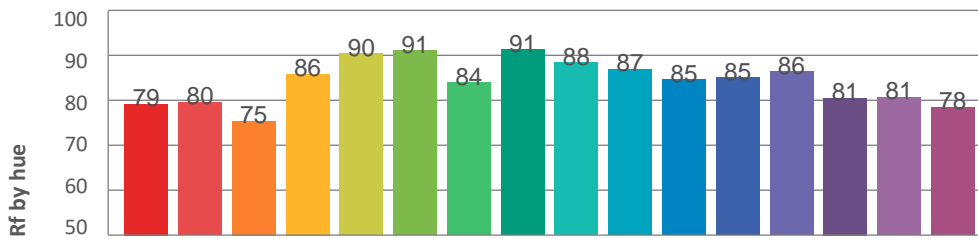
Rg 97,2

Gamut index Rg

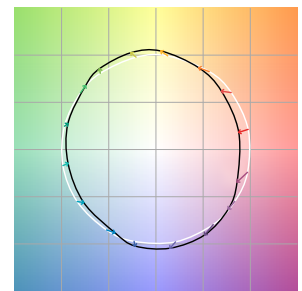
Hue Bin	R _f	Graphic shifts (%)	
		Chroma	Hue
1	79	-10%	-1%
2	80	-8%	7%
3	75	-3%	11%
4	86	4%	8%
5	90	6%	4%
6	91	5%	-2%
7	84	0%	-10%
8	91	-3%	-3%
9	88	-6%	-1%
10	87	-5%	5%
11	85	-3%	9%
12	85	5%	2%
13	86	5%	-7%
14	81	4%	-14%
15	81	-1%	-11%
16	78	-9%	-12%



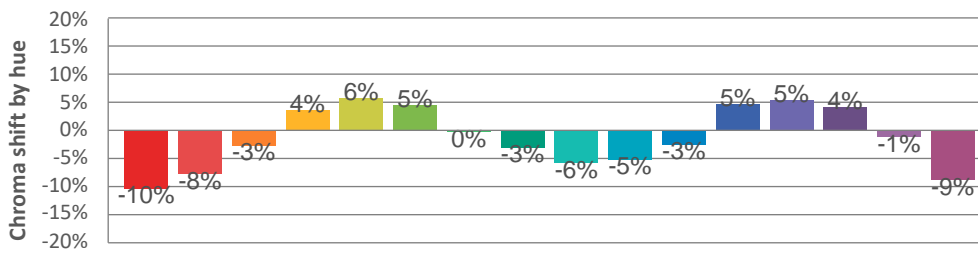
Hue binH



Color vector graphics



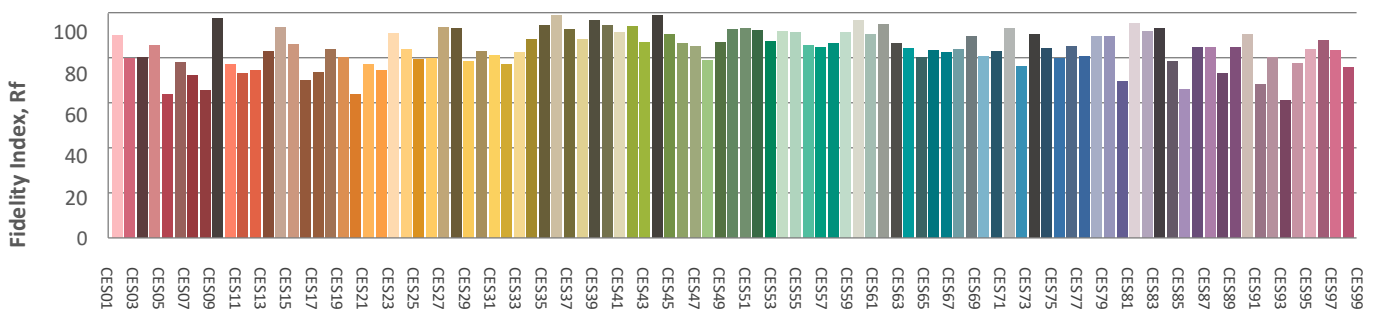
Hue bin



Color distortion graphics



Color Evaluation Sample



CLS LED BV
 info@cls-led.com
 www.cls-led.com

2017 CLS-LED BV. All rights reserved. Information subject to change without notice, CLS-LED BV and all affiliated companies disclaim liability for injury, damage direct or indirect loss, consequential or economic loss or any other loss occasioned by the use of, inability to use or reliance on the information contained in this document. No part of this document may be reproduced, in any form or by any means, without permission in writing from CLS-LED BV. Other legal information can be found in our General conditions, found on the back of your CLS-LED BV invoice, inside the CLS catalogue or on our website www.cls-led.com/voorwaarden.pdf

Glare Evaluation According to UGR

p Ceiling	70	70	50	50	30	70	70	50	50	30	
p Walls	50	30	50	30	30	50	30	50	30	30	
p Floor	20	20	20	20	20	20	20	20	20	20	
Room size X Y	Viewing direction at right angles to lamp axis					Viewing direction parallel to lamp axis					
2H	2H	5,7	6,4	6,0	6,6	6,8	5,8	6,4	6,0	6,6	6,8
	3H	6,1	6,7	6,4	7,0	7,2	6,3	6,9	6,6	7,1	7,4
	4H	6,4	6,9	6,7	7,2	7,5	6,5	7,0	6,8	7,3	7,6
	6H	6,6	7,1	7,0	7,4	7,7	6,6	7,2	7,0	7,4	7,7
	8H	6,8	7,3	7,1	7,6	7,9	6,8	7,3	7,1	7,6	7,9
	12H	7,0	7,5	7,4	7,8	8,1	7,0	7,4	7,3	7,7	8,1
4H	2H	5,9	6,5	6,2	6,7	7,0	6,0	6,5	6,3	6,8	7,0
	3H	6,5	6,9	6,8	7,2	7,6	6,6	7,1	7,0	7,4	7,7
	4H	6,8	7,2	7,2	7,6	7,9	6,9	7,3	7,3	7,7	8,0
	6H	7,2	7,5	7,6	7,9	8,3	7,2	7,5	7,6	7,9	8,3
	8H	7,5	7,8	7,9	8,2	8,6	7,4	7,7	7,8	8,1	8,5
	12H	7,8	8,1	8,3	8,5	8,9	7,7	8,0	8,2	8,4	8,8
8H	4H	6,9	7,2	7,4	7,6	8,0	7,0	7,3	7,4	7,7	8,1
	6H	7,5	7,7	7,9	8,1	8,6	7,4	7,6	7,9	8,1	8,5
	8H	7,9	8,0	8,3	8,5	9,0	7,8	7,9	8,2	8,4	8,9
	12H	8,4	8,5	8,9	9,0	9,5	8,2	8,4	8,7	8,8	9,3
12H	4H	6,9	7,2	7,4	7,6	8,0	7,0	7,3	7,5	7,7	8,1
	6H	7,5	7,7	8,0	8,1	8,6	7,5	7,7	8,0	8,1	8,6
	8H	8,0	8,1	8,5	8,6	9,1	7,9	8,0	8,4	8,5	9,0

Variation of the observer position for the luminaire distance S

S = 1,0H	+0,8 / -0,8	+1,0 / -0,8
S = 1,5H	+2,0 / -1,3	+2,1 / -1,3
S = 2,0H	+3,3 / -1,9	+3,6 / -1,8
Standard table	BK04	BK03
Correction summand	-9,7	-10,1

Corrected glare indices referring to 668lm total luminous flux

