

LM-79

Test Report

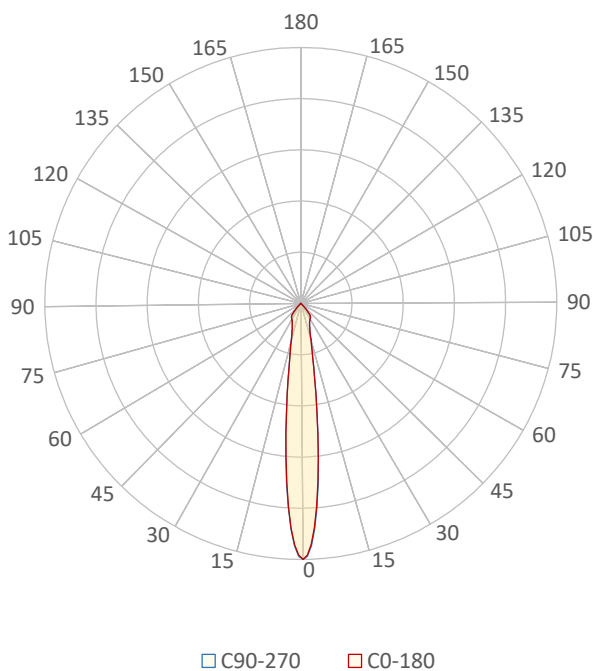
LM79-RUBY-6-2700K-CRI80-SPOT

General Description

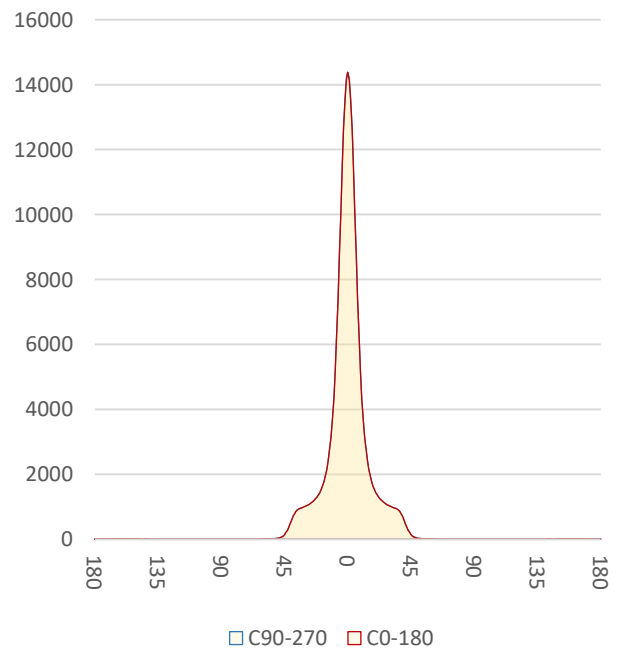
Item number	RU-16-X-X-01-1-X
Date and time	18-11-2016 14:06:04
CCT (Kelvin)	2675 K
Beam angle	14,3°
Luminous flux	2668 lm
Efficiency	92 lm/watt
Weighted energy	28,9 kWh/1000h
Power factor	0,99
CRI (RA)	81,9
Fidelity index Rf	Rf 84,0
Gammut index Rg	Rg 97,0
Peak	14391 cd



Polar diagram



Cartesian diagram



CLS LED BV
info@cls-led.com
www.cls-led.com

2017 CLS-LED BV. All rights reserved. Information subject to change without notice, CLS-LED BV and all affiliated companies disclaim liability for injury, damage direct or indirect loss, consequential or economic loss or any other loss occasioned by the use of, inability to use or reliance on the information contained in this document. No part of this document may be reproduced, in any form or by any means, without permission in writing from CLS-LED BV. Other legal information can be found in our General conditions, found on the back of your CLS-LED BV invoice, inside the CLS catalogue or on our website www.cls-led.com/voorwaarden.pdf

LM-79

Test Report

LM79-RUBY-6-2700K-CRI80-SPOT

Beam details	1m	2m	3m	4m	5m																			
Lux*	14382 lx	3595 lx	1598 lx	899 lx	575 lx																			
*measured at center of beam																								
Footcandles*	1336,1 fcd	334,0 fcd	148,5 fcd	83,5 fcd	53,4 fcd																			
Beam width (meter)	0,3 m	0,5 m	0,8 m	1 m	1,3 m																			
Beam width (Feet)	0,8 ft	1,6 ft	2,5 ft	3,3 ft	4,1 ft																			
Beam intensities																								
1m	2m	3m	4m	5m	6m	7m	8m	9m	10m	11m	12m	13m	14m	15m	16m	17m	18m	19m	20m					
14382lx	3595lx	1598lx	899lx	575lx	399lx	294lx	225lx	178lx	144lx	119lx	100lx	85lx	73lx	64lx	56lx	50lx	44lx	40lx	36lx					
3,3ft	6,6ft	9,8ft	13,1ft	16,4ft	19,7ft	23ft	26,2ft	29,5ft	32,8ft	36,1ft	39,4ft	42,7ft	45,9ft	49,2ft	52,5ft	55,8ft	59,1ft	62,3ft	65,6ft					
1336,1fcd	334fcd	148,5fcd	83,5fcd	53,4fcd	37,1fcd	27,3fcd	20,9fcd	16,5fcd	13,4fcd	11fcd	9,3fcd	7,9fcd	6,8fcd	5,9fcd	5,2fcd	4,6fcd	4,1fcd	3,7fcd	3,3fcd					
Intensities in 0° c-plane																								
0°	1°	2°	3°	4°	5°	6°	7°	8°	9°	10°	11°	12°	13°	14°	15°	16°	17°	18°	19°					
14,4K	14,2K	13,6K	12,6K	11,4K	10,1K	8,7K	7,3K	6,2K	5,1K	4,3K	3,6K	3,1K	2,7K	2,4K	2,1K	1,9K	1,8K	1,6K	1,5K					
100%	99%	94%	88%	80%	70%	60%	51%	43%	36%	30%	25%	22%	19%	17%	15%	13%	12%	11%	11%					
Intensities in 90° c-plane																								
0°	1°	2°	3°	4°	5°	6°	7°	8°	9°	10°	11°	12°	13°	14°	15°	16°	17°	18°	19°					
14,4K	14,2K	13,6K	12,7K	11,5K	10,2K	8,8K	7,4K	6,2K	5,2K	4,3K	3,7K	3,1K	2,7K	2,4K	2,2K	1,9K	1,8K	1,6K	1,5K					
100%	99%	95%	88%	80%	71%	61%	51%	43%	36%	30%	25%	22%	19%	17%	15%	14%	12%	11%	11%					
Intensities in 180° c-plane																								
0°	1°	2°	3°	4°	5°	6°	7°	8°	9°	10°	11°	12°	13°	14°	15°	16°	17°	18°	19°					
14,4K	14,2K	13,6K	12,6K	11,4K	10,1K	8,7K	7,3K	6,2K	5,1K	4,3K	3,6K	3,1K	2,7K	2,4K	2,1K	1,9K	1,8K	1,6K	1,5K					
100%	99%	94%	88%	80%	70%	60%	51%	43%	36%	30%	25%	22%	19%	17%	15%	13%	12%	11%	11%					
Intensities in 270° c-plane																								
0°	1°	2°	3°	4°	5°	6°	7°	8°	9°	10°	11°	12°	13°	14°	15°	16°	17°	18°	19°					
14,4K	14,2K	13,6K	12,7K	11,5K	10,2K	8,8K	7,4K	6,2K	5,2K	4,3K	3,7K	3,1K	2,7K	2,4K	2,2K	1,9K	1,8K	1,6K	1,5K					
100%	99%	95%	88%	80%	71%	61%	51%	43%	36%	30%	25%	22%	19%	17%	15%	14%	12%	11%	11%					
Beam angle 50%					Field angle 10%					Cutoff angle 2,5%					Intensity ratio in 120° cone					Intensity ratio in 90° cone				
14,3°					39,9°					84,1°					99,4%					97,9%				



CLS LED BV
 info@cls-led.com
 www.cls-led.com

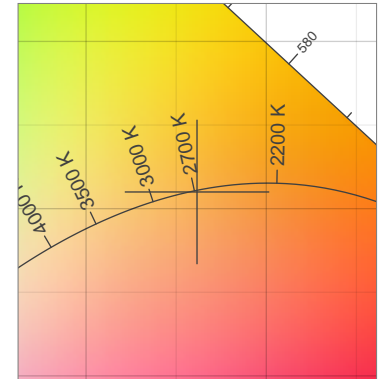
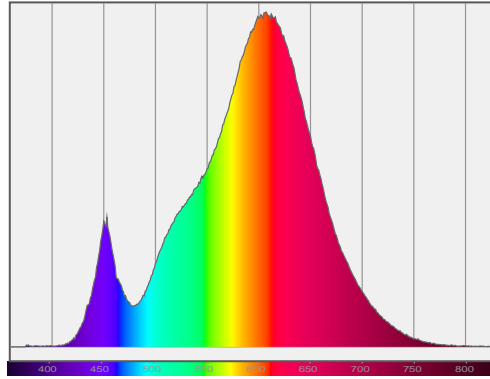
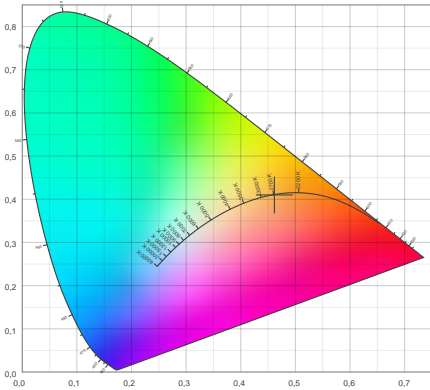
2017 CLS-LED BV. All rights reserved. Information subject to change without notice, CLS-LED BV and all affiliated companies disclaim liability for injury, damage direct or indirect loss, consequential or economic loss or any other loss occasioned by the use of, inability to use or reliance on the information contained in this document. No part of this document may be reproduced, in any form or by any means, without permission in writing from CLS-LED BV. Other legal information can be found in our General conditions, found on the back of your CLS-LED BV invoice, inside the CLS catalogue or on our website www.cls-led.com/voorwaarden.pdf

LM-79

Test Report

LM79-RUBY-6-2700K-CRI80-SPOT

Color details



CIE 1931

x: 0,462



Spectra

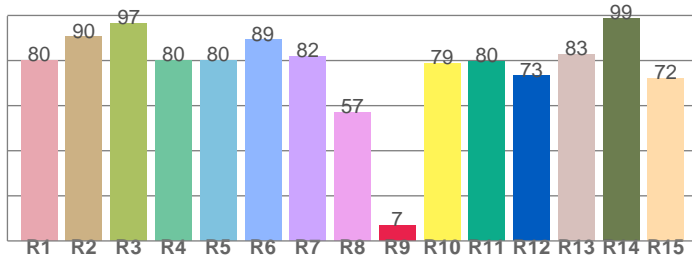
CIE 1931 ZOOM

2675 K

y: 0,410

Δuv : 0,0004

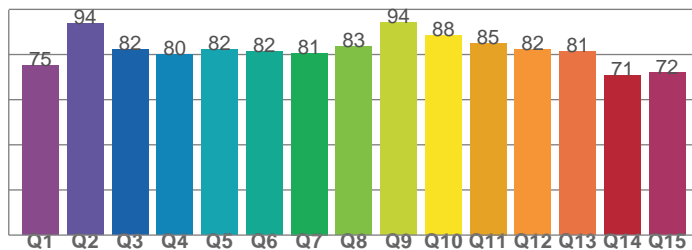
CRI: **81,9** (R1-R8)



CRI values, R1-R8 are used to calculate final CRI value

R1	R2	R3	R4	R5	R6	R7	R8
80,2	90,5	96,6	80,0	80,1	89,1	81,7	57,2
R9	R10	R11	R12	R13	R14	R15	
6,7	78,7	79,5	73,2	82,5	98,9	72,0	

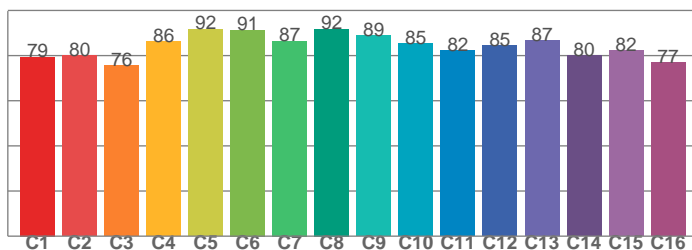
CQS: **80,9**



CQS values

Q1	Q2	Q3	Q4	Q5	Q6	Q7	Q8
75,3	93,9	82,4	79,9	82,1	81,5	80,7	83,4
Q9	Q10	Q11	Q12	Q13	Q14	Q15	
94,2	88,3	85,1	82,3	81,2	70,6	71,9	

TM30: **84,0**



TM30 values, 16 binned values out of total of 99 values

C1	C2	C3	C4	C5	C6	C7	C8
79,4	79,9	75,7	86,3	91,7	91,4	86,5	91,8
C9	C10	C11	C12	C13	C14	C15	
88,8	85,4	82,1	84,5	86,6	79,9	82,2	

Color parameters

Color temperature	Color rendering index	Red component	Color fidelity	Color gamut	Color quality scale	Color coordinate cie 1931	Color coordinate cie 1931	Color coordinate	Color coordinate	Color deviation from black body
CCT	CRI	CRI R9	TM30 Rf	TM30 Rg	CQS	x	y	u	v	Δuv
2675 K	81,9	6,7	84,0	97,0	80,9	0,462	0,410	0,264	0,352	0,0004



CLS LED BV
 info@cls-led.com
 www.cls-led.com

2017 CLS-LED BV. All rights reserved. Information subject to change without notice, CLS-LED BV and all affiliated companies disclaim liability for injury, damage direct or indirect loss, consequential or economic loss or any other loss occasioned by the use of, inability to use or reliance on the information contained in this document. No part of this document may be reproduced, in any form or by any means, without permission in writing from CLS-LED BV. Other legal information can be found in our General conditions, found on the back of your CLS-LED BV invoice, inside the CLS catalogue or on our website www.cls-led.com/voorwaarden.pdf

LM-79

Test Report

LM79-RUBY-6-2700K-CRI80-SPOT

TM30 details

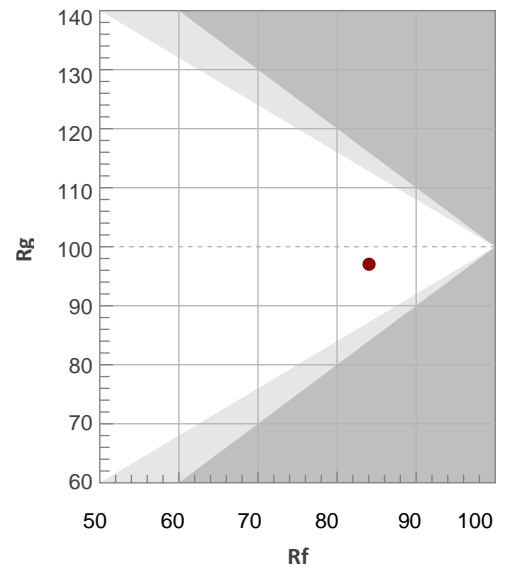
Rf 84,0

Fidelity index Rf

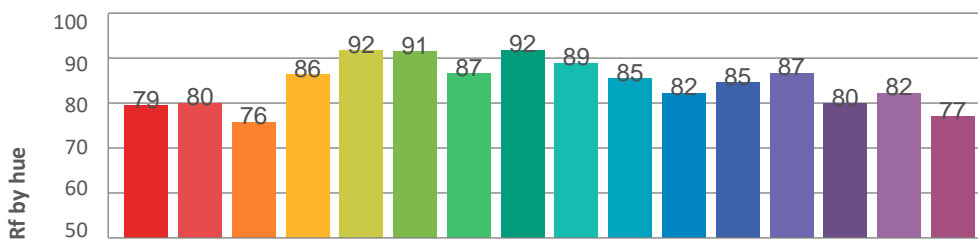
Rg 97,0

Gamut index Rg

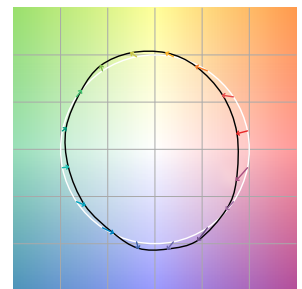
Hue Bin	R _f	Graphic shifts (%)	
		Chroma	Hue
1	79	-12%	-1%
2	80	-9%	8%
3	76	-3%	13%
4	86	3%	8%
5	92	5%	5%
6	91	6%	-2%
7	87	0%	-8%
8	92	-3%	-4%
9	89	-6%	0%
10	85	-5%	8%
11	82	-2%	12%
12	85	6%	3%
13	87	6%	-7%
14	80	5%	-15%
15	82	-2%	-11%
16	77	-9%	-15%



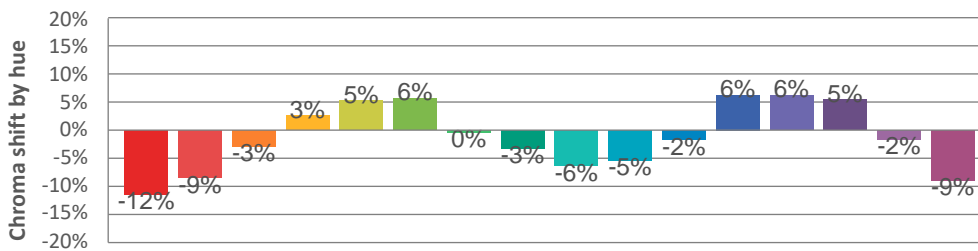
Hue binH



Color vector graphics



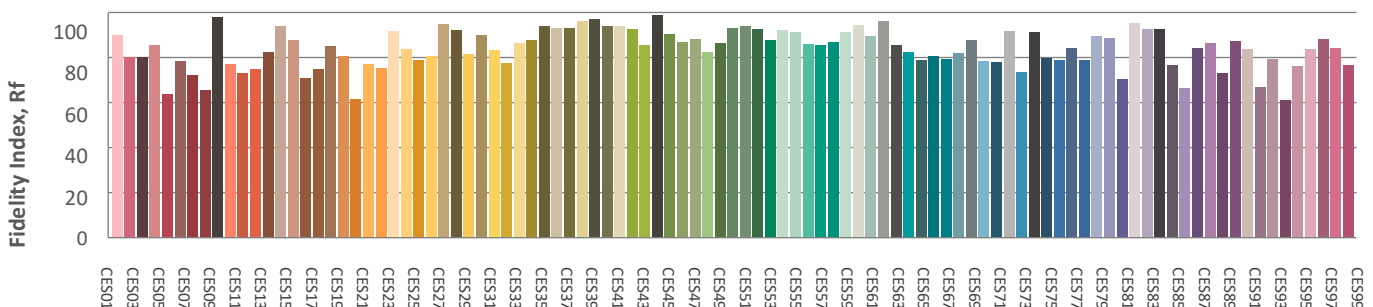
Hue bin



Color distortion graphics



Color Evaluation Sample



CLS LED BV
 info@cls-led.com
 www.cls-led.com

2017 CLS-LED BV. All rights reserved. Information subject to change without notice, CLS-LED BV and all affiliated companies disclaim liability for injury, damage direct or indirect loss, consequential or economic loss or any other loss occasioned by the use of, inability to use or reliance on the information contained in this document. No part of this document may be reproduced, in any form or by any means, without permission in writing from CLS-LED BV. Other legal information can be found in our General conditions, found on the back of your CLS-LED BV invoice, inside the CLS catalogue or on our website www.cls-led.com/voorwaarden.pdf

LM-79

Test Report

LM79-RUBY-6-2700K-CRI80-SPOT

Glare Evaluation According to UGR

p Ceiling	70	70	50	50	30	70	70	50	50	30
p Walls	50	30	50	30	30	50	30	50	30	30
p Floor	20	20	20	20	20	20	20	20	20	20
Room size X Y	Viewing direction at right angles to lamp axis					Viewing direction parallel to lamp axis				
n/a	n/a	n/a	n/a	n/a	n/a	n/a	n/a	n/a	n/a	n/a
n/a	n/a	n/a	n/a	n/a	n/a	n/a	n/a	n/a	n/a	n/a
n/a	n/a	n/a	n/a	n/a	n/a	n/a	n/a	n/a	n/a	n/a
n/a	n/a	n/a	n/a	n/a	n/a	n/a	n/a	n/a	n/a	n/a
n/a	n/a	n/a	n/a	n/a	n/a	n/a	n/a	n/a	n/a	n/a
n/a	n/a	n/a	n/a	n/a	n/a	n/a	n/a	n/a	n/a	n/a
n/a	n/a	n/a	n/a	n/a	n/a	n/a	n/a	n/a	n/a	n/a
n/a	n/a	n/a	n/a	n/a	n/a	n/a	n/a	n/a	n/a	n/a
n/a	n/a	n/a	n/a	n/a	n/a	n/a	n/a	n/a	n/a	n/a
n/a	n/a	n/a	n/a	n/a	n/a	n/a	n/a	n/a	n/a	n/a
n/a	n/a	n/a	n/a	n/a	n/a	n/a	n/a	n/a	n/a	n/a
n/a	n/a	n/a	n/a	n/a	n/a	n/a	n/a	n/a	n/a	n/a
n/a	n/a	n/a	n/a	n/a	n/a	n/a	n/a	n/a	n/a	n/a
n/a	n/a	n/a	n/a	n/a	n/a	n/a	n/a	n/a	n/a	n/a
Variation of the observer position for the luminaire distance S										
n/a	n/a				n/a					
n/a	n/a				n/a					
n/a	n/a				n/a					
Standard table	n/a				n/a					
Correction summand	n/a				n/a					
Corrected glare indices referring to 2668lm total luminous flux										



CLS LED BV
 info@cls-led.com
 www.cls-led.com

2017 CLS-LED BV. All rights reserved. Information subject to change without notice, CLS-LED BV and all affiliated companies disclaim liability for injury, damage direct or indirect loss, consequential or economic loss or any other loss occasioned by the use of, inability to use or reliance on the information contained in this document. No part of this document may be reproduced, in any form or by any means, without permission in writing from CLS-LED BV. Other legal information can be found in our General conditions, found on the back of your CLS-LED BV invoice, inside the CLS catalogue or on our website www.cls-led.com/voorwaarden.pdf