

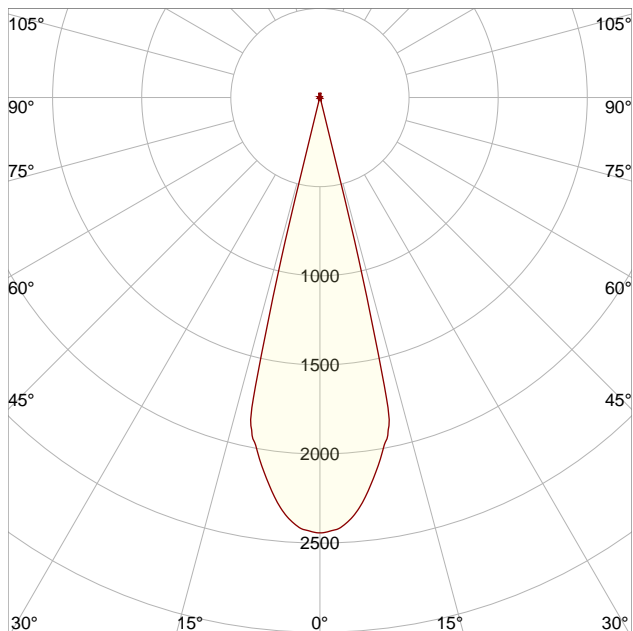
LM-79

Test Report

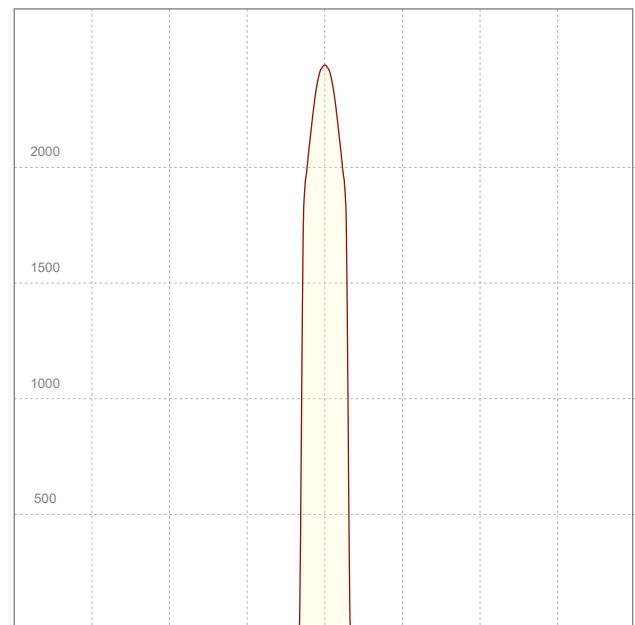
LM79-TOPAZ-PROFILE-3000K-CRI98-SPOT

General Description

Item number	T-P-XLX-1B-4095-Z
Date and time	17-6-2025 14:41:31
CCT (Kelvin)	3089 K
Beam angle	26,2°
Luminous flux	362 lm
Efficiency	33 lm/watt
Weighted energy	10,9 kWh/1000h
Power factor	0,99
CRI (RA)	94,3
Fidelity index Rf	Rf 95,6
Gammut index Rg	Rg 101,8
Peak	2441 cd



Polar curve



Linear distribution diagram



CLS LED BV
info@cls-led.com
www.cls-led.com

2021 CLS-LED BV. All rights reserved. Information subject to change without notice, CLS-LED BV and all affiliated companies disclaim liability for injury, damage direct or indirect loss, consequential or economic loss or any other loss occasioned by the use of, inability to use or reliance on the information contained in this document. No part of this document may be reproduced, in any form or by any means, without permission in writing from CLS-LED BV. Other legal information can be found in our General conditions, found on the back of your CLS-LED BV invoice, inside the CLS catalogue or on our website www.cls-led.com/voorwaarden.pdf

LM-79

Test Report

LM79-TOPAZ-PROFILE-3000K-CRI98-SPOT

Beam details	1m	2m	3m	4m	5m																			
Lux*	2441 lx	610 lx	271 lx	153 lx	98 lx																			
*measured at center of beam																								
Footcandles*	226,8 fcd	56,7 fcd	25,2 fcd	14,2 fcd	9,1 fcd																			
Beam width (meter)	0,5 m	0,9 m	1,4 m	1,9 m	2,3 m																			
Beam width (Feet)	1,5 ft	3,1 ft	4,6 ft	6,1 ft	7,6 ft																			
Beam intensities																								
1m	2m	3m	4m	5m	6m	7m	8m	9m	10m	11m	12m	13m	14m	15m	16m	17m	18m	19m	20m					
2441lx	610lx	271lx	153lx	98lx	68lx	50lx	38lx	30lx	24lx	20lx	17lx	14lx	12lx	11lx	10lx	8lx	8lx	7lx	6lx					
3,3ft	6,6ft	9,8ft	13,1ft	16,4ft	19,7ft	23ft	26,2ft	29,5ft	32,8ft	36,1ft	39,4ft	42,7ft	45,9ft	49,2ft	52,5ft	55,8ft	59,1ft	62,3ft	65,6ft					
226,8fcd	56,7fcd	25,2fcd	14,2fcd	9,1fcd	6,3fcd	4,6fcd	3,5fcd	2,8fcd	2,3fcd	1,9fcd	1,6fcd	1,3fcd	1,2fcd	1fcd	0,9fcd	0,8fcd	0,7fcd	0,6fcd	0,6fcd					
Intensities in 0° c-plane																								
0°	1°	2°	3°	4°	5°	6°	7°	8°	9°	10°	11°	12°	13°	14°	15°	16°	17°	18°	19°					
2441	2436	2426	2407	2376	2335	2283	2222	2157	2090	2019	1949	1819	1318	496	42	1	1	1	1					
100%	100%	99%	99%	97%	96%	94%	91%	88%	86%	83%	80%	75%	54%	20%	2%	0%	0%	0%	0%					
Intensities in 90° c-plane																								
0°	1°	2°	3°	4°	5°	6°	7°	8°	9°	10°	11°	12°	13°	14°	15°	16°	17°	18°	19°					
2441	2436	2426	2407	2376	2335	2283	2222	2157	2090	2019	1949	1819	1318	496	42	1	1	1	1					
100%	100%	99%	99%	97%	96%	94%	91%	88%	86%	83%	80%	75%	54%	20%	2%	0%	0%	0%	0%					
Intensities in 180° c-plane																								
0°	1°	2°	3°	4°	5°	6°	7°	8°	9°	10°	11°	12°	13°	14°	15°	16°	17°	18°	19°					
2441	2436	2426	2407	2376	2335	2283	2222	2157	2090	2019	1949	1819	1318	496	42	1	1	1	1					
100%	100%	99%	99%	97%	96%	94%	91%	88%	86%	83%	80%	75%	54%	20%	2%	0%	0%	0%	0%					
Intensities in 270° c-plane																								
0°	1°	2°	3°	4°	5°	6°	7°	8°	9°	10°	11°	12°	13°	14°	15°	16°	17°	18°	19°					
2441	2436	2426	2407	2376	2335	2283	2222	2157	2090	2019	1949	1819	1318	496	42	1	1	1	1					
100%	100%	99%	99%	97%	96%	94%	91%	88%	86%	83%	80%	75%	54%	20%	2%	0%	0%	0%	0%					
Beam angle 50%					Field angle 10%					Cutoff angle 2,5%					Intensity ratio in 120° cone					Intensity ratio in 90° cone				
26,2°					28,6°					29,5°					99,7%					99,6%				



CLS LED BV
 info@cls-led.com
 www.cls-led.com

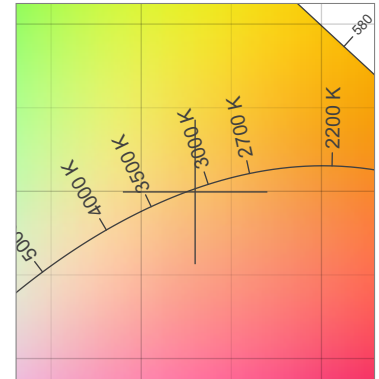
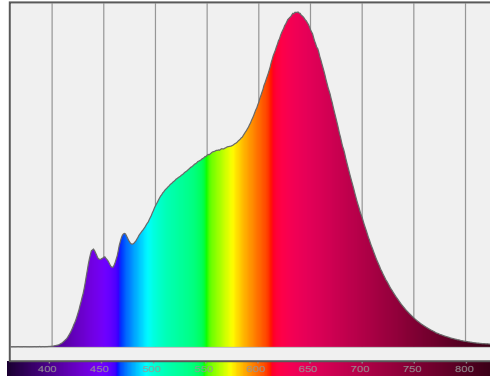
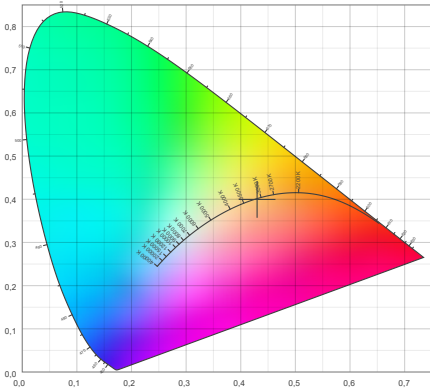
2021 CLS-LED BV. All rights reserved. Information subject to change without notice, CLS-LED BV and all affiliated companies disclaim liability for injury, damage direct or indirect loss, consequential or economic loss or any other loss occasioned by the use of, inability to use or reliance on the information contained in this document. No part of this document may be reproduced, in any form or by any means, without permission in writing from CLS-LED BV. Other legal information can be found in our General conditions, found on the back of your CLS-LED BV invoice, inside the CLS catalogue or on our website www.cls-led.com/voorwaarden.pdf

LM-79

Test Report

LM79-TOPAZ-PROFILE-3000K-CRI98-SPOT

Color details



CIE 1931

x: 0,430



Spectra

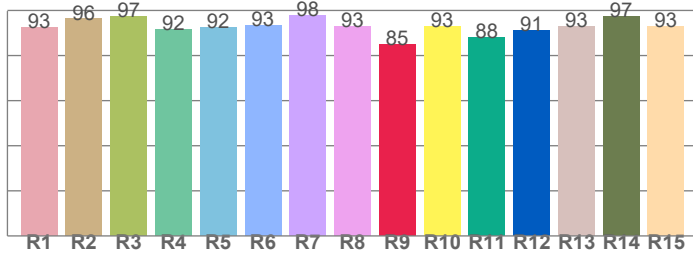
CIE 1931 ZOOM

3089 K

y: 0,400

Δuv : -0,0008

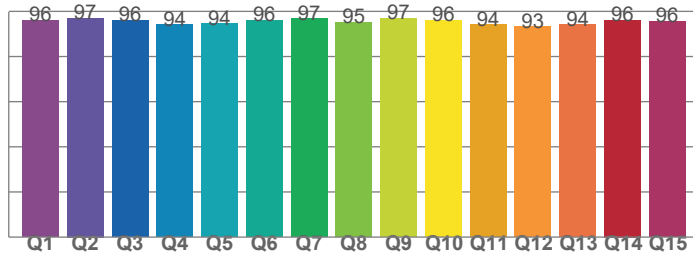
CRI: 94,3 (R1-R8)



CRI values, R1-R8 are used to calculate final CRI value

R1	R2	R3	R4	R5	R6	R7	R8
92,5	96,2	97,4	91,8	92,5	93,5	97,8	92,8
R9	R10	R11	R12	R13	R14	R15	
85,0	92,9	88,2	91,3	93,1	97,5	93,1	

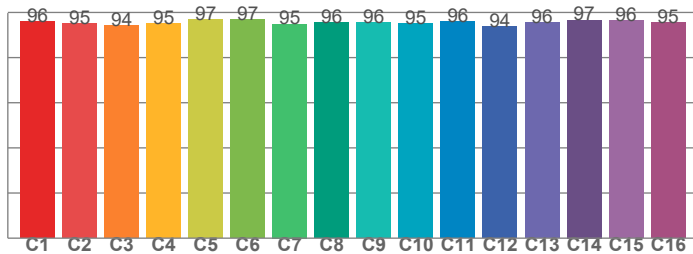
CQS: 95,2



CQS values

Q1	Q2	Q3	Q4	Q5	Q6	Q7	Q8
95,9	97,0	96,0	94,1	94,5	96,1	96,7	95,1
Q9	Q10	Q11	Q12	Q13	Q14	Q15	
96,8	95,9	94,0	93,1	94,0	96,2	95,7	

TM30: 95,6



TM30 values, 16 binned values out of total of 99 values

C1	C2	C3	C4	C5	C6	C7	C8
95,9	95,0	94,1	95,2	96,8	96,7	94,9	95,6
C9	C10	C11	C12	C13	C14	C15	
95,7	95,1	96,0	93,7	95,7	96,6	96,3	

Color parameters

Color temperature	Color rendering index	Red component	Color fidelity	Color gamut	Color quality scale	Color coordinate cie 1931	Color coordinate cie 1931	Color coordinate	Color coordinate	Color deviation from black body
CCT	CRI	CRI R9	TM30 Rf	TM30 Rg	CQS	x	y	u	v	Δuv
3089 K	94,3	85,0	95,6	101,8	95,2	0,430	0,400	0,248	0,346	-0,0008



CLS LED BV
info@cls-led.com
www.cls-led.com

2021 CLS-LED BV. All rights reserved. Information subject to change without notice, CLS-LED BV and all affiliated companies disclaim liability for injury, damage direct or indirect loss, consequential or economic loss or any other loss occasioned by the use of, inability to use or reliance on the information contained in this document. No part of this document may be reproduced, in any form or by any means, without permission in writing from CLS-LED BV. Other legal information can be found in our General conditions, found on the back of your CLS-LED BV invoice, inside the CLS catalogue or on our website www.cls-led.com/voorwaarden.pdf

LM-79

Test Report

LM79-TOPAZ-PROFILE-3000K-CRI98-SPOT

TM30 details

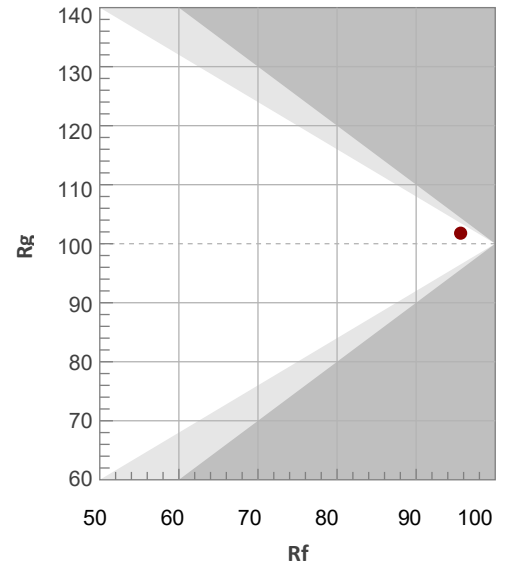
Rf 95,6

Fidelity index Rf

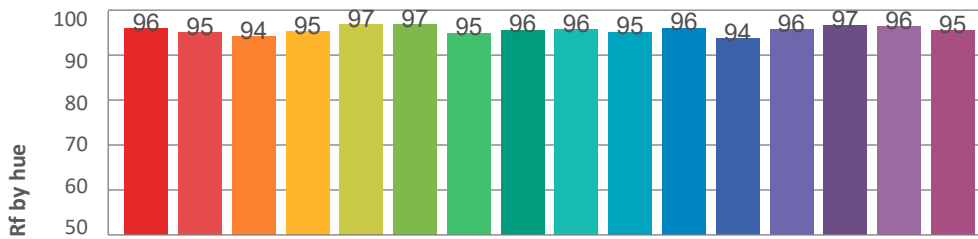
Rg 101,8

Gamut index Rg

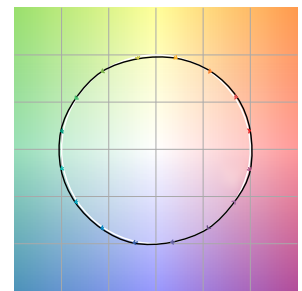
Hue Bin	R _f	Graphic shifts (%)	
		Chroma	Hue
1	96	2%	0%
2	95	2%	-2%
3	94	1%	-3%
4	95	-1%	-3%
5	97	-2%	0%
6	97	0%	2%
7	95	1%	3%
8	96	3%	1%
9	96	3%	1%
10	95	2%	-1%
11	96	2%	-2%
12	94	2%	-4%
13	96	0%	-3%
14	97	0%	-1%
15	96	0%	1%
16	95	2%	-2%



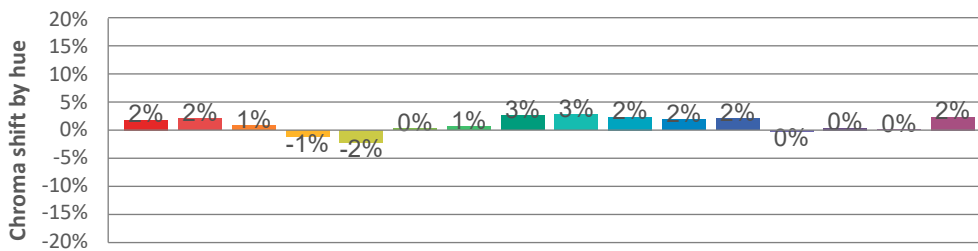
Hue binH



Color vector graphics



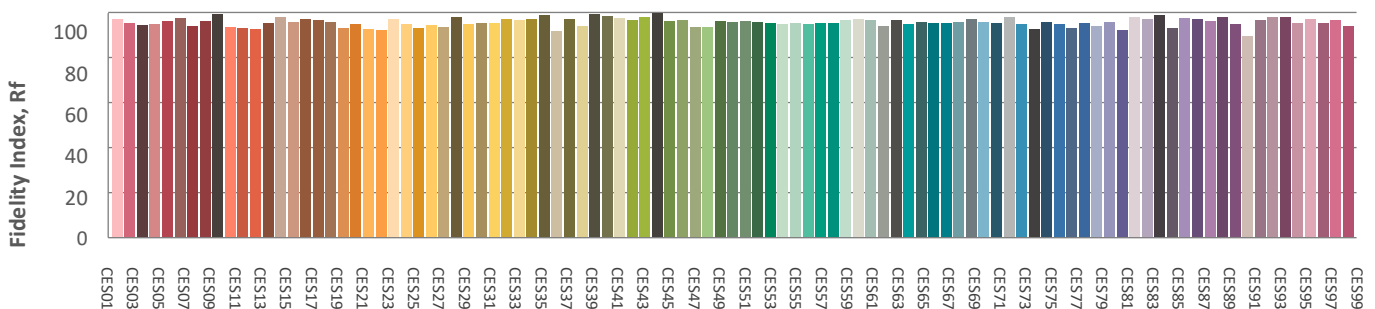
Hue bin



Color distortion graphics



Color Evaluation Sample



CLS LED BV
 info@cls-led.com
 www.cls-led.com

2021 CLS-LED BV. All rights reserved. Information subject to change without notice, CLS-LED BV and all affiliated companies disclaim liability for injury, damage direct or indirect loss, consequential or economic loss or any other loss occasioned by the use of, inability to use or reliance on the information contained in this document. No part of this document may be reproduced, in any form or by any means, without permission in writing from CLS-LED BV. Other legal information can be found in our General conditions, found on the back of your CLS-LED BV invoice, inside the CLS catalogue or on our website www.cls-led.com/voorwaarden.pdf

Glare Evaluation According to UGR

p Ceiling	70	70	50	50	30	70	70	50	50	30	
p Walls	50	30	50	30	30	50	30	50	30	30	
p Floor	20	20	20	20	20	20	20	20	20	20	
Room size X Y	Viewing direction at right angles to lamp axis					Viewing direction parallel to lamp axis					
2H	2H	-16,1	-15,8	-16,1	-15,7	-15,5	-16,1	-15,8	-16,1	-15,7	-15,5
	3H	-14,1	-13,6	-13,7	-13,5	-13,3	-14,1	-13,6	-13,7	-13,5	-13,3
	4H	-12,7	-12,2	-12,3	-12,0	-11,8	-12,7	-12,2	-12,3	-12,0	-11,8
	6H	-11,0	-10,7	-10,7	-10,4	-10,0	-11,0	-10,7	-10,7	-10,4	-10,0
	8H	-10,5	-10,2	-10,2	-9,8	-9,5	-10,5	-10,2	-10,2	-9,8	-9,5
	12H	-10,0	-9,7	-9,6	-9,3	-8,9	-10,0	-9,7	-9,6	-9,3	-8,9
4H	2H	-15,4	-15,0	-15,0	-14,8	-14,5	-15,4	-15,0	-15,0	-14,8	-14,5
	3H	-12,9	-12,6	-12,6	-12,2	-11,8	-12,9	-12,6	-12,6	-12,2	-11,8
	4H	-11,3	-11,0	-10,9	-10,6	-10,1	-11,3	-11,0	-10,9	-10,6	-10,1
	6H	-9,6	-9,2	-9,1	-8,9	-8,5	-9,6	-9,2	-9,1	-8,9	-8,5
	8H	-9,1	-8,7	-8,5	-8,4	-8,0	-9,1	-8,7	-8,5	-8,4	-8,0
	12H	-8,5	-8,2	-8,0	-7,8	-7,3	-8,5	-8,2	-8,0	-7,8	-7,3
8H	4H	-10,6	-10,2	-10,1	-9,9	-9,5	-10,6	-10,2	-10,1	-9,9	-9,5
	6H	-8,7	-8,5	-8,2	-8,0	-7,5	-8,7	-8,5	-8,2	-8,0	-7,5
	8H	-8,0	-7,9	-7,5	-7,3	-6,7	-8,0	-7,9	-7,5	-7,3	-6,7
	12H	-7,3	-7,1	-6,7	-6,6	-6,0	-7,3	-7,1	-6,7	-6,6	-6,0
12H	4H	-10,5	-10,2	-10,0	-9,8	-9,4	-10,5	-10,2	-10,0	-9,8	-9,4
	6H	-8,5	-8,4	-8,0	-7,8	-7,2	-8,5	-8,4	-8,0	-7,8	-7,2
	8H	-7,8	-7,6	-7,2	-7,1	-6,5	-7,8	-7,6	-7,2	-7,1	-6,5

Variation of the observer position for the luminaire distance S

S = 1.0H	0,1 / -0,1	0,1 / -0,1
S = 1.5H	0,1 / -0,2	0,1 / -0,2
S = 2.0H	0,2 / -0,2	0,2 / -0,2
Standard table	n/a	n/a
Correction summand	n/a	n/a

Corrected glare indices referring to 362lm total luminous flux