

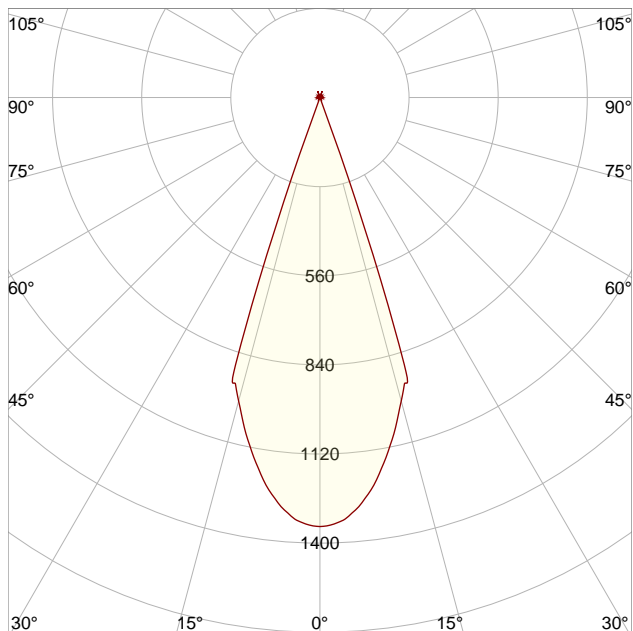
# LM-79

## Test Report

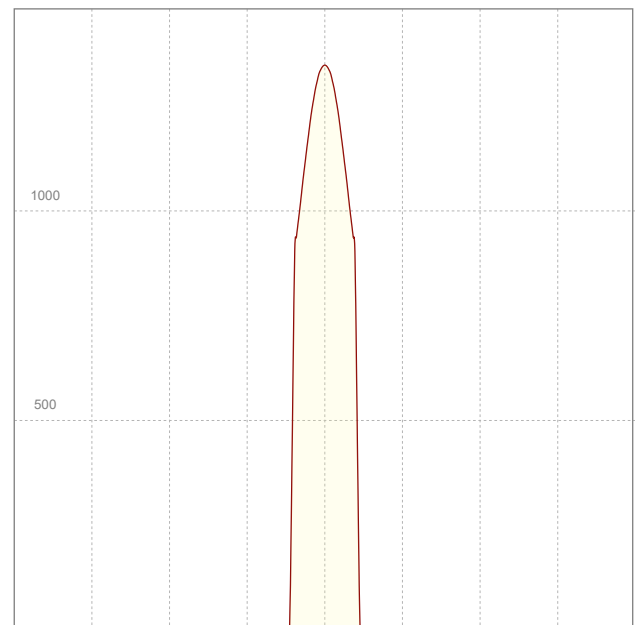
### LM79-TOPAZ-PROFILE-3000K-CRI98-WIDE

#### General Description

Item number	T-P-XLX-1B-4095-Z
Date and time	17-6-2025 14:37:14
CCT (Kelvin)	3088 K
Beam angle	36,4°
Luminous flux	364 lm
Efficiency	33 lm/watt
Weighted energy	11,0 kWh/1000h
Power factor	0,95
CRI (RA)	94,3
Fidelity index Rf	Rf 95,6
Gammut index Rg	Rg 101,8
Peak	1347 cd



*Polar curve*



*Linear distribution diagram*



**CLS LED BV**  
info@cls-led.com  
www.cls-led.com

2021 CLS-LED BV. All rights reserved. Information subject to change without notice, CLS-LED BV and all affiliated companies disclaim liability for injury, damage direct or indirect loss, consequential or economic loss or any other loss occasioned by the use of, inability to use or reliance on the information contained in this document. No part of this document may be reproduced, in any form or by any means, without permission in writing from CLS-LED BV. Other legal information can be found in our General conditions, found on the back of your CLS-LED BV invoice, inside the CLS catalogue or on our website [www.cls-led.com/voorwaarden.pdf](http://www.cls-led.com/voorwaarden.pdf)

# LM-79

## Test Report

### LM79-TOPAZ-PROFILE-3000K-CRI98-WIDE

Beam details	1m	2m	3m	4m	5m														
Lux*	1347 lx	337 lx	150 lx	84 lx	54 lx														
*measured at center of beam																			
Footcandles*	125,2 fcd	31,3 fcd	13,9 fcd	7,8 fcd	5,0 fcd														
Beam width (meter)	0,7 m	1,3 m	2 m	2,6 m	3,3 m														
Beam width (Feet)	2,2 ft	4,3 ft	6,5 ft	8,6 ft	10,8 ft														
<b>Beam intensities</b>																			
1m	2m	3m	4m	5m	6m	7m	8m	9m	10m	11m	12m	13m	14m	15m	16m	17m	18m	19m	20m
1347lx	337lx	150lx	84lx	54lx	37lx	27lx	21lx	17lx	13lx	11lx	9lx	8lx	7lx	6lx	5lx	5lx	4lx	4lx	3lx
3,3ft	6,6ft	9,8ft	13,1ft	16,4ft	19,7ft	23ft	26,2ft	29,5ft	32,8ft	36,1ft	39,4ft	42,7ft	45,9ft	49,2ft	52,5ft	55,8ft	59,1ft	62,3ft	65,6ft
125,2fcd	31,3fcd	13,9fcd	7,8fcd	5fcd	3,5fcd	2,6fcd	2fcd	1,5fcd	1,3fcd	1fcd	0,9fcd	0,7fcd	0,6fcd	0,6fcd	0,5fcd	0,4fcd	0,4fcd	0,3fcd	0,3fcd
<b>Intensities in 0° c-plane</b>																			
0°	1°	2°	3°	4°	5°	6°	7°	8°	9°	10°	11°	12°	13°	14°	15°	16°	17°	18°	19°
1347	1345	1339	1331	1317	1299	1277	1253	1226	1195	1163	1129	1095	1060	1022	987	953	919	728	407
100%	100%	99%	99%	98%	96%	95%	93%	91%	89%	86%	84%	81%	79%	76%	73%	71%	68%	54%	30%
<b>Intensities in 90° c-plane</b>																			
0°	1°	2°	3°	4°	5°	6°	7°	8°	9°	10°	11°	12°	13°	14°	15°	16°	17°	18°	19°
1347	1345	1339	1331	1317	1299	1277	1253	1226	1195	1163	1129	1095	1060	1022	987	953	919	728	407
100%	100%	99%	99%	98%	96%	95%	93%	91%	89%	86%	84%	81%	79%	76%	73%	71%	68%	54%	30%
<b>Intensities in 180° c-plane</b>																			
0°	1°	2°	3°	4°	5°	6°	7°	8°	9°	10°	11°	12°	13°	14°	15°	16°	17°	18°	19°
1347	1345	1339	1331	1317	1299	1277	1253	1226	1195	1163	1129	1095	1060	1022	987	953	919	728	407
100%	100%	99%	99%	98%	96%	95%	93%	91%	89%	86%	84%	81%	79%	76%	73%	71%	68%	54%	30%
<b>Intensities in 270° c-plane</b>																			
0°	1°	2°	3°	4°	5°	6°	7°	8°	9°	10°	11°	12°	13°	14°	15°	16°	17°	18°	19°
1347	1345	1339	1331	1317	1299	1277	1253	1226	1195	1163	1129	1095	1060	1022	987	953	919	728	407
100%	100%	99%	99%	98%	96%	95%	93%	91%	89%	86%	84%	81%	79%	76%	73%	71%	68%	54%	30%
Beam angle 50%		Field angle 10%				Cutoff angle 2,5%				Intensity ratio in 120° cone				Intensity ratio in 90° cone					
36,4°		39,8°				40,6°				99,8%				99,7%					



**CLS LED BV**  
 info@cls-led.com  
 www.cls-led.com

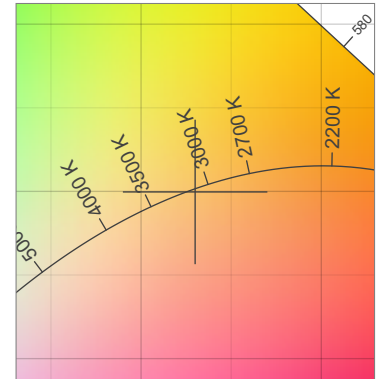
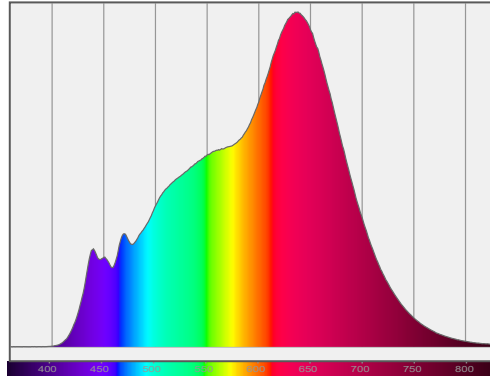
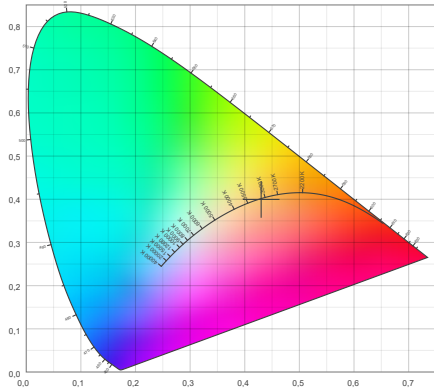
2021 CLS-LED BV. All rights reserved. Information subject to change without notice, CLS-LED BV and all affiliated companies disclaim liability for injury, damage direct or indirect loss, consequential or economic loss or any other loss occasioned by the use of, inability to use or reliance on the information contained in this document. No part of this document may be reproduced, in any form or by any means, without permission in writing from CLS-LED BV. Other legal information can be found in our General conditions, found on the back of your CLS-LED BV invoice, inside the CLS catalogue or on our website [www.cls-led.com/voorwaarden.pdf](http://www.cls-led.com/voorwaarden.pdf)

# LM-79

## Test Report

### LM79-TOPAZ-PROFILE-3000K-CRI98-WIDE

#### Color details



CIE 1931

x: 0,430



Spectra

CIE 1931 ZOOM

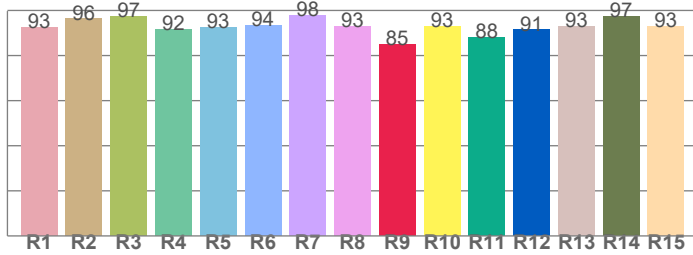
3088 K

y: 0,400

$\Delta uv: -0,0008$

**CRI: 94,3 (R1-R8)**

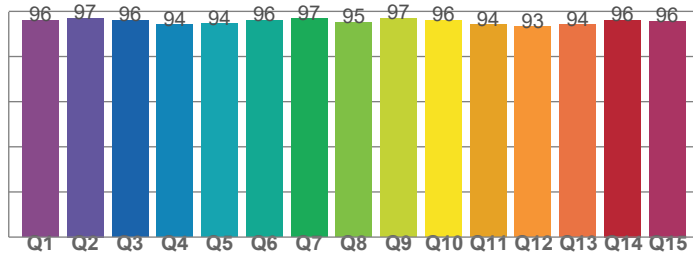
*CRI values, R1-R8 are used to calculate final CRI value*



R1	R2	R3	R4	R5	R6	R7	R8
92,5	96,3	97,3	91,7	92,5	93,5	97,8	92,8
R9	R10	R11	R12	R13	R14	R15	
85,1	93,0	88,2	91,4	93,1	97,4	93,1	

**CQS: 95,2**

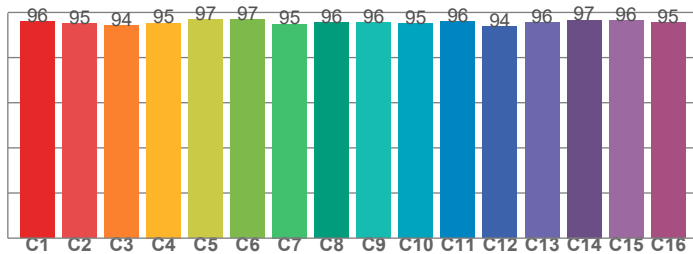
*CQS values*



Q1	Q2	Q3	Q4	Q5	Q6	Q7	Q8
96,0	97,0	96,0	94,1	94,5	96,1	96,7	95,1
Q9	Q10	Q11	Q12	Q13	Q14	Q15	
96,8	95,9	94,1	93,1	94,0	96,2	95,7	

**TM30: 95,6**

*TM30 values, 16 binned values out of total of 99 values*



C1	C2	C3	C4	C5	C6	C7	C8
95,9	95,0	94,1	95,3	96,8	96,7	94,9	95,6
C9	C10	C11	C12	C13	C14	C15	
95,7	95,1	96,1	93,7	95,7	96,6	96,3	

#### Color parameters

Color temperature	Color rendering index	Red component	Color fidelity	Color gamut	Color quality scale	Color coordinate cie 1931	Color coordinate cie 1931	Color coordinate	Color coordinate	Color deviation from black body
CCT	CRI	CRI R9	TM30 Rf	TM30 Rg	CQS	x	y	u	v	$\Delta uv$
3088 K	94,3	85,1	95,6	101,8	95,2	0,430	0,400	0,248	0,346	-0,0008



**CLS LED BV**  
 info@cls-led.com  
 www.cls-led.com

2021 CLS-LED BV. All rights reserved. Information subject to change without notice, CLS-LED BV and all affiliated companies disclaim liability for injury, damage direct or indirect loss, consequential or economic loss or any other loss occasioned by the use of, inability to use or reliance on the information contained in this document. No part of this document may be reproduced, in any form or by any means, without permission in writing from CLS-LED BV. Other legal information can be found in our General conditions, found on the back of your CLS-LED BV invoice, inside the CLS catalogue or on our website [www.cls-led.com/voorwaarden.pdf](http://www.cls-led.com/voorwaarden.pdf)

# LM-79

## Test Report

# LM79-TOPAZ-PROFILE-3000K-CRI98-WIDE

### TM30 details

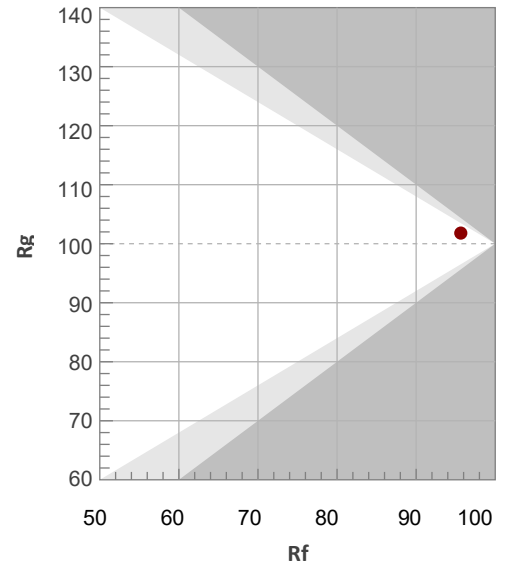
Rf 95,6

Fidelity index Rf

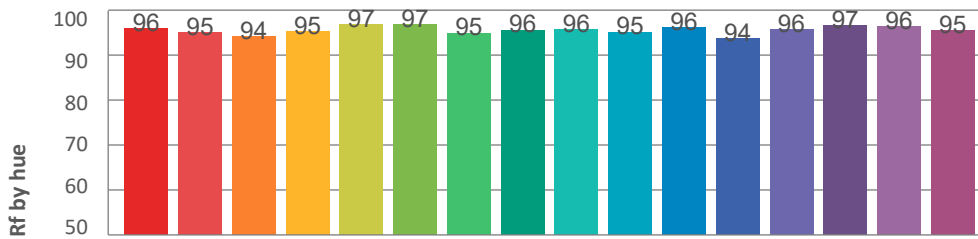
Rg 101,8

Gamut index Rg

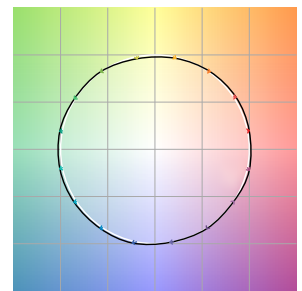
Hue Bin	R <sub>f</sub>	Graphic shifts (%)	
		Chroma	Hue
1	96	2%	0%
2	95	2%	-2%
3	94	1%	-3%
4	95	-1%	-3%
5	97	-2%	0%
6	97	0%	2%
7	95	1%	3%
8	96	3%	1%
9	96	3%	1%
10	95	2%	-1%
11	96	2%	-2%
12	94	2%	-4%
13	96	0%	-3%
14	97	0%	-1%
15	96	0%	1%
16	95	2%	-2%



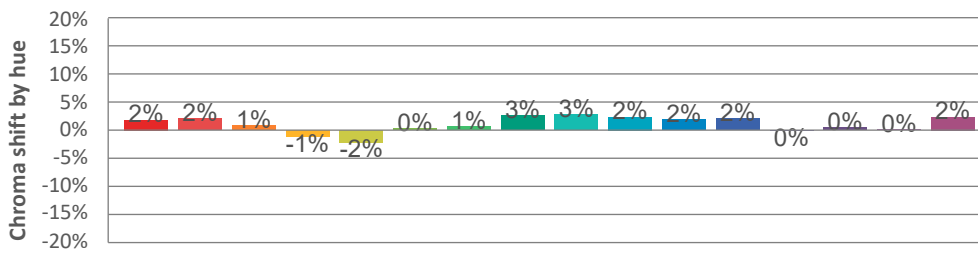
### Hue binH



### Color vector graphics



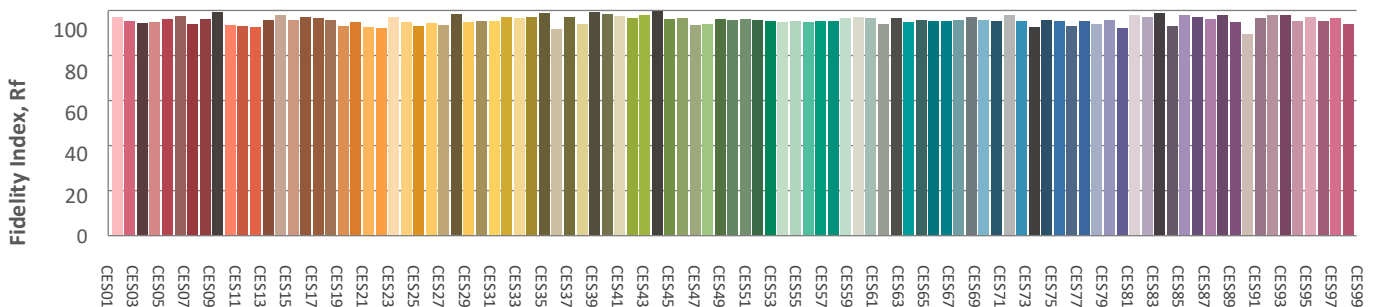
### Hue bin



### Color distortion graphics



### Color Evaluation Sample



CLS LED BV  
info@cls-led.com  
www.cls-led.com

2021 CLS-LED BV. All rights reserved. Information subject to change without notice, CLS-LED BV and all affiliated companies disclaim liability for injury, damage direct or indirect loss, consequential or economic loss or any other loss occasioned by the use of, inability to use or reliance on the information contained in this document. No part of this document may be reproduced, in any form or by any means, without permission in writing from CLS-LED BV. Other legal information can be found in our General conditions, found on the back of your CLS-LED BV invoice, inside the CLS catalogue or on our website [www.cls-led.com/voorwaarden.pdf](http://www.cls-led.com/voorwaarden.pdf)

# LM-79

## Test Report

### LM79-TOPAZ-PROFILE-3000K-CRI98-WIDE

#### Glare Evaluation According to UGR

p Ceiling	70	70	50	50	30	70	70	50	50	30	
p Walls	50	30	50	30	30	50	30	50	30	30	
p Floor	20	20	20	20	20	20	20	20	20	20	
Room size X Y	Viewing direction at right angles to lamp axis					Viewing direction parallel to lamp axis					
2H	2H	-18,1	-17,8	-18,0	-17,6	-17,4	-18,1	-17,8	-18,0	-17,6	-17,4
	3H	-15,9	-15,4	-15,5	-15,2	-15,0	-15,9	-15,4	-15,5	-15,2	-15,0
	4H	-15,0	-14,5	-14,6	-14,3	-14,1	-15,0	-14,5	-14,6	-14,3	-14,1
	6H	-13,8	-13,4	-13,5	-13,1	-12,7	-13,8	-13,4	-13,5	-13,1	-12,7
	8H	-13,0	-12,6	-12,7	-12,3	-11,9	-13,0	-12,6	-12,7	-12,3	-11,9
	12H	-12,4	-12,0	-12,1	-11,7	-11,3	-12,4	-12,0	-12,1	-11,7	-11,3
4H	2H	-17,3	-16,8	-16,9	-16,6	-16,4	-17,3	-16,8	-16,9	-16,6	-16,4
	3H	-14,8	-14,4	-14,4	-14,0	-13,6	-14,8	-14,4	-14,4	-14,0	-13,6
	4H	-13,8	-13,5	-13,4	-13,0	-12,5	-13,8	-13,5	-13,4	-13,0	-12,5
	6H	-12,4	-12,0	-11,9	-11,7	-11,4	-12,4	-12,0	-11,9	-11,7	-11,4
	8H	-11,6	-11,2	-11,1	-10,9	-10,5	-11,6	-11,2	-11,1	-10,9	-10,5
	12H	-10,9	-10,6	-10,4	-10,2	-9,8	-10,9	-10,6	-10,4	-10,2	-9,8
8H	4H	-13,3	-12,9	-12,8	-12,6	-12,2	-13,3	-12,9	-12,8	-12,6	-12,2
	6H	-11,6	-11,4	-11,1	-10,9	-10,4	-11,6	-11,4	-11,1	-10,9	-10,4
	8H	-10,5	-10,3	-10,0	-9,8	-9,2	-10,5	-10,3	-10,0	-9,8	-9,2
	12H	-9,7	-9,5	-9,1	-9,0	-8,4	-9,7	-9,5	-9,1	-9,0	-8,4
12H	4H	-13,2	-12,9	-12,7	-12,5	-12,1	-13,2	-12,9	-12,7	-12,5	-12,1
	6H	-11,3	-11,2	-10,8	-10,6	-10,0	-11,3	-11,2	-10,8	-10,6	-10,0
	8H	-10,2	-10,0	-9,6	-9,5	-8,9	-10,2	-10,0	-9,6	-9,5	-8,9
Variation of the observer position for the luminaire distance S											
S = 1.0H	0,1 / -0,1					0,1 / -0,1					
S = 1.5H	0,1 / -0,1					0,1 / -0,1					
S = 2.0H	0,3 / -0,2					0,3 / -0,2					
Standard table	n/a					n/a					
Correction summand	n/a					n/a					
Corrected glare indices referring to 364lm total luminous flux											



**CLS LED BV**  
 info@cls-led.com  
 www.cls-led.com

2021 CLS-LED BV. All rights reserved. Information subject to change without notice, CLS-LED BV and all affiliated companies disclaim liability for injury, damage direct or indirect loss, consequential or economic loss or any other loss occasioned by the use of, inability to use or reliance on the information contained in this document. No part of this document may be reproduced, in any form or by any means, without permission in writing from CLS-LED BV. Other legal information can be found in our General conditions, found on the back of your CLS-LED BV invoice, inside the CLS catalogue or on our website [www.cls-led.com/voorwaarden.pdf](http://www.cls-led.com/voorwaarden.pdf)