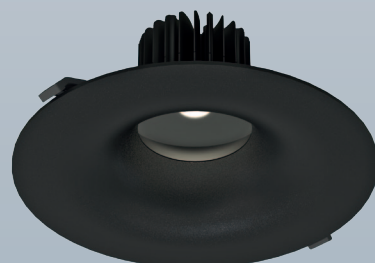
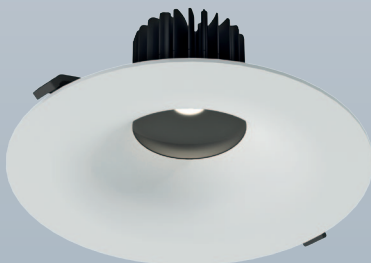




Emerald Retail & Food

Indoor Downlighters

Unique Combination of Light Efficiency & Light Comfort



Emerald Retail & Food

CLS Emerald Retail & Food

The Emerald Retail & Food series is the ultimate downlighter series for optimal illumination of product groups in retail projects.

The new Retail & Food series is characterized by the use of special LED light sources that are specifically tailored for displaying the colours of certain product groups as attractive as possible.

Multiple years of consumer research for the most attractive light for the optimal presentation of specific product groups within retail environments have led to a series of unique LED light sources which ensure an optimal exposure of your sales range.

What makes the Emerald Retail & Food so versatile?

Excellent Colour Rendering & Wide Choice of Light Colours

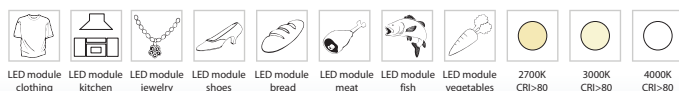
The Emerald Retail & Food offers specially developed LED modules whose light spectrum is carefully customized to the optimum exposure of certain product groups.

In this way, the special LED modules for clothing expose all the colours in a particularly sparkling & lifelike way. Customers don't need to make their way to the daylight with their suit, dress, undershirt or shirt in order to judge the colour. The meat modules are extra strong in the red light spectrum, whereby meat in showcases shows beautifully red. In the bread modules, warm white tones have been incorporated in order to give bread a warm glow.

And so each LED module offers special customized features to optimally illuminate your product and thereby stimulate sales.

CLS offers special LED modules for the following product groups:

- > Clothing
- > Furniture
- > Kitchens
- > Jewelry
- > Shoes
- > Bread
- > Meat
- > Fish
- > Vegetables & fruit



Your local CLS distributor often has a special sample kit that allows you to assess in your own shop the huge difference between a standard LED light source and the special CLS Retail LED modules.

The Special Retail & Food LED modules are also available in the CLS Sapphire and the CLS Jade fixtures series, so that you are able to create the optimum light image in your store.

Sapphire series

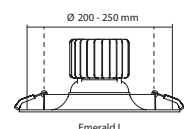
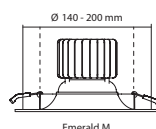


Jade series



Simple Design Suitable for Existing Ceiling Holes From 140 up to 250 mm.

Thanks to the modular Cone construction of the Emerald and the variable installation dimensions, it is possible to replace almost 98 % of the existing PL and CFL fixtures. This means that you are no longer tied to one specific brand. In addition, there are almost no LED alternatives next to the present ones of 2 x 26 and 2 x 42 Watt downlighters with an installation dimension of 250 mm.



High Light Efficiency

The LED light source is of the Japanese brand CITIZEN, the world market leader in the field of CoB LED technology.

In combination with the patent pending CLS Convex lens system a luminous efficiency up to 92% is achieved.

All versions of the Emerald series feature an A+ energy label.





Jansen Totaal Wonen, The Netherlands

Excellent dimming possibility for extra energy savings

By far most of the traditional light sources such as PL, CFL and fluorescent lighting solutions are not dimmable. To the extent that they are dimmable, this results in no extra savings, since the power is incorporated in the electricity supply.

The CLS Emerald fixtures offer savings up to 60% on traditional fixtures. In case one chooses to dim the lighting in off-peak hours, the energy consumption of an Emerald fixture decreases even more, and your savings may increase up to 90% compared to traditional lighting.

CLS offers the following dimming methods:

- > 1-10V.
- > Phase Cut. (Mains dimming)
- > DALI.
- > Bluetooth controlled by Casambi.



Visual Comfort

CLS has developed a number of unique innovative technical solutions, which guarantee high comfort. The holder of the LED light source is created in black to prevent reflections and glare.

In the standard version of the Emerald a soft diffusion filter is applied to create a soft homogeneous light beam.

Wide Beam Angle

A wide beam angle offers the advantage of fewer fixtures needed to illuminate a room. It will be obvious that this means a significant reduction in the needed investment for lighting in a project.

Optimal Harmonization with Any Environment

To perfectly integrate the fixtures in the interior design of a room, the Emerald series is available in the colours white, grey and black.

In addition, CLS offers the possibility to supply the fixtures in almost any RAL colour (MOQ applies). This provides architects and designers with the ultimate freedom to customize all fixtures to the 'corporate identity' of their clients.

Low Installation Height

Because of the huge amount of already present installations (climate control, data cabling etc.) above the ceilings in hospitals, offices and stores, there is often less space available for lighting.

With an installation height of 121 mm till a maximum of 146 mm, the Emerald will not create any unexpected surprises during the period of construction.

A Sound Investment

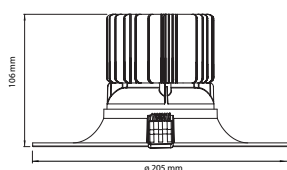
Components of the highest possible quality are used for the production of the Emerald series. No compromises are made for the quality of the individual parts. Next to the high quality Japanese LED modules, the power supplies are of European origine.

Unlike many other suppliers on the market who only claim to do so, **CLS actually designs and produces its fixtures in The Netherlands**. CLS belongs to a group of companies with more than 25 years of expertise in the professional lighting business.

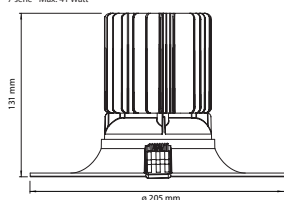
Measurements CLS Emerald Retail & Food

Emerald M

6 serie - Max. 28 Watt

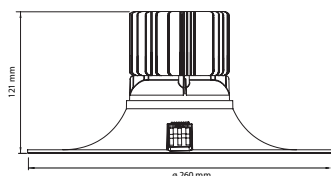


7 serie - Max. 41 Watt

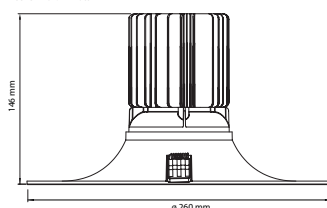


Emerald L

6 serie - Max. 28 Watt



7 serie - Max. 41 Watt



Light engine

6 serie - 28 Watt



7 serie - 41 Watt



Technical specifications

LED:	Citizen
Available colours:	Clothing, furniture, kitchen, jewelry & shoes Bread, meat, fish, vegetables & fruit CRI >82: 2700K, 3000K & 4000K
Beam angles:	83°
Power supply:	6 serie : 700 mA 7 serie : 1000 mA
Power consumption:	6 serie : 28 Watt 7 serie : 41 Watt
Housing:	PC / aluminium
Swivel:	350° horizontal
IP value:	IP40
Cable length:	150 cm
Ambien temperature:	-10 °C till +40 °C

Icons

