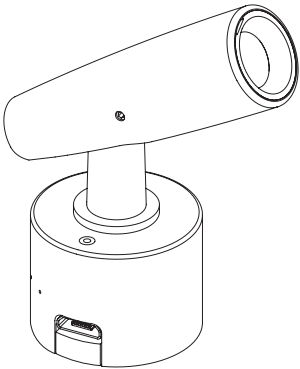


Index	2	Installation	4
Safety information	2	Focus Micro distribution box	5
Content	2	Programming	6
Technical	3	Snoot assembly	7
Specifications	3	Zoom function	7
Accessories	3	List of symbols	8



SAFETY INFORMATION

Always switch off mains power of the driver before connecting or maintaining any fixtures!

Make sure all connectors are connected properly

Use a source of AC power that complies to local electrical codes

Block access below the work area when maintaining the unit

Don't modify or install genuine parts on this product

Don't install in a flammable or explosive area

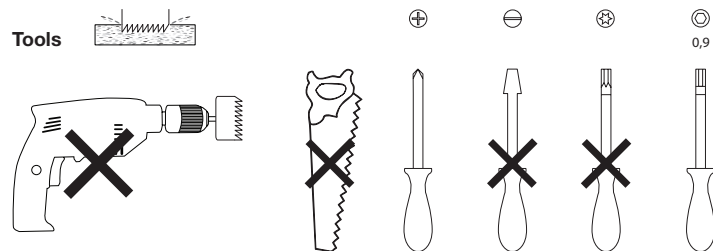
Warning! Some surfaces can be hot

CONTENT

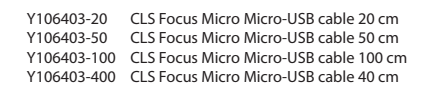


CLS FOCUS MICRO B SERIES

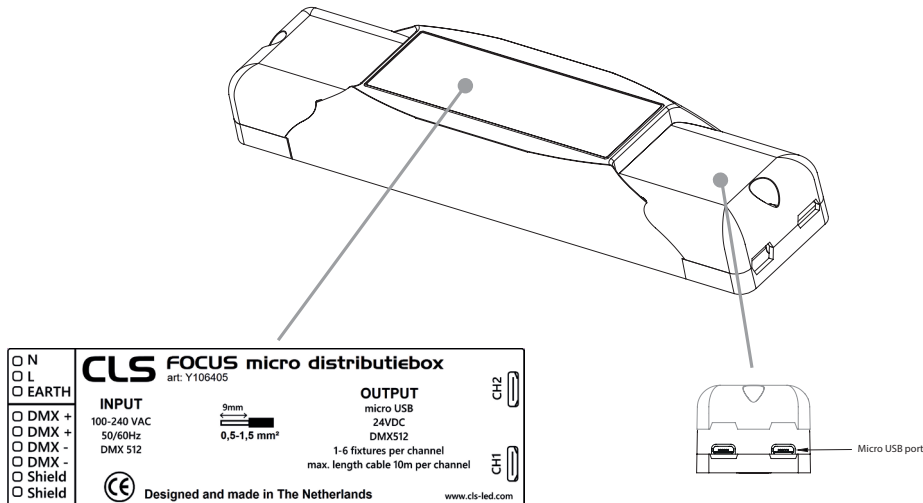
INSTALLATION FOCUS MICRO B



Y106403-20	CLS Focus Micro Micro-USB cable 20 cm
Y106403-50	CLS Focus Micro Micro-USB cable 50 cm
Y106403-100	CLS Focus Micro Micro-USB cable 100 cm
Y106403-400	CLS Focus Micro Micro-USB cable 40 cm
Y106404-B	CLS Focus Micro magnetic cable organiser (5pcs)
Y106405	CLS Focus Micro Base distribution box
Y106017	CLS Magnets for Magno dim / DMX programming



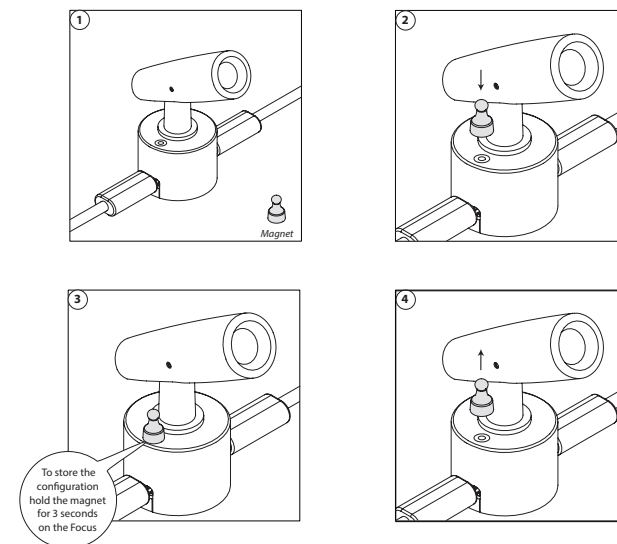
Y106405 CLS Focus Micro Base distribution box
Measurements: 222 x 50 x 35 mm (WxDxH)



PROGRAMMING TABLE				
DMX	Function	Data	Parameters	Description
CH1	Set address 001 to 255	0	0 = no change	Use this DMX channel to set address from 001 to 255. The configured DMX address is called "n"
		1...255	DMX address = 1...255	
CH2	Set address 256 to 508	0	no change	Use this DMX channel to set address from 256 to 508. The configured DMX address is called "n"
		1...255	DMX address = 256...508	
CH3	Static behavior	0	no change	If no DMX is present the fixture will respond like set in this function.
		1	last DMX value	
		2	output off	
		3	load static values	
CH4	Dynamic Soft dim	0	no change	Dynamic Soft dim will interpolate between the DMX values. This function makes the dim curve smoother
		1	off	
		2	on	
CH5	Static Output	0	no change	Each output channel can be set to an static intensity
			Output Off	
		1...255	Intensity 1...255	
CH14	Load default settings	0	no change	This function resets all settings to the Factory setting. Check Factory setting table.
		1	Load Factory settings	

DMX Control

The Focus Micro B is controlled with 1 DMX channel. To get the best dimming resolution the "Dynamic Softdim" can be configured. An extra channel added and controls the fade speed, where value 0 stand for no extra delay and 1-255 will add extra delay to the fade.

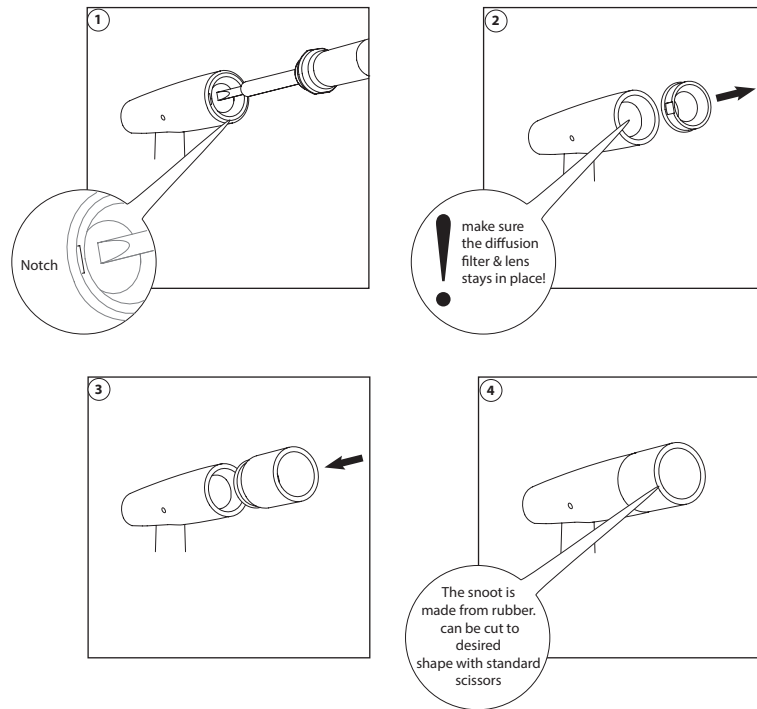


2023 CLS-LED BV. All rights reserved. Information subject to change without notice, CLS-LED BV and all affiliated companies disclaim liability for injury, damage direct or indirect loss, consequential or economic loss or any other loss occasioned by the use of, inability to use or reliance on the information contained in this manual. No part of this manual may be reproduced, in any form or by any means, without permission in writing from CLS-LED BV. Other legal information can be found in our General conditions, found on the back of your CLS-LED BV invoice, inside the CLS catalogue or on our website www.cls-led.com/General-Terms.pdf

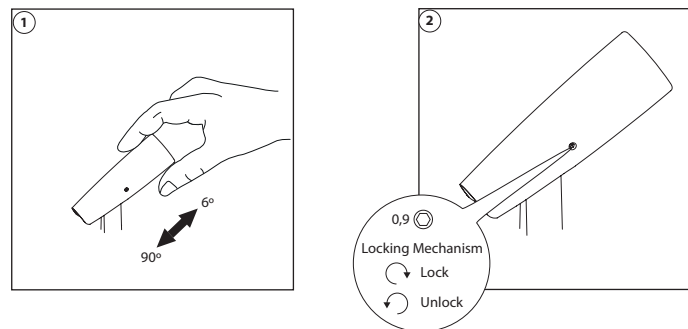
Configuration

Via DMX the Focus Micro B can be configured. After setting the DMX to the desired values just hold the magnet on the Focus Magno point indicator. Hold the magnet for approximately 3 seconds (step 3), when holding the magnet on the Focus it will turn on and when programming has finished the Focus will flash again. When the light does not flash after 3 seconds repower and try again.

SNOOT ASSEMBLY



ZOOM FUNCTION



LIST OF SYMBOLS

	Protection class One, two or three		Retail & Food LED modules Clothing, furniture, kitchens, jewellery, shoes, bread, meat, fish and vegetables & fruit.
	Application area Indoor or outdoor		Colour Available colours: Amber, blue, red or green
	Application area Floor, wall or ceiling		White colour temperature In different Kelvin values: Cold white, neutral white, warm white or extra warm white
	Swivel Fixture is horizontally rotatable, indicated in degrees		Curve Minimal bending curve in centimeters
	Swivel Fixture is vertically rotatable, indicated in degrees		Cutting length Indicated by the cutting marks
	Multiple connection Daisychain connectivity		LED pitch Pitch between the LEDs in millimeters
	Installation depth In centimeters		Power supply In VDC, VAC or milliAmpere
	Installation size In centimeters		Power consumption In VA or Watt
	Cable length Maximum cable attached to the fixture in centimeters		Dimmable 1-10 Volt, Phase, individual, DMX dimmable or DALI
	Driver Inclusive or exclusive internal or external		PWM dimming Traditional PWM dimming, DMX analog or DMX Hybrid dim
	Weight In grams/kilograms		Bluetooth controlled By Casambi
	Pressure Maximum pressure on the fixture in kg/cm²		Magne dimming Accurate dimming from 100 - 1% by using a magnet
	Lifespan Of the light source in hours		Dynamic Control Dynamic Power Control or Dynamic Temperature Control
	Lenses Available lenses, indicated in degrees		DMX input Fixture works on DMX512 protocol or Wireless DMX
	Performance Zoom Adjustable beam angle		Combined product Compose your own fixture
	LEDs Kind of LED used in the fixture		Warranty 3 or 5 years warranty on the product
	Plug & play Easy connection using the SmartConnect system		Conformité Européenne CE marking for free marketability of industrial goods within the EU
	IP value Ingress Protection classifies the degrees of protection provided against the intrusion of the product		Energy label
	Colour changing RGB, RGB-W, RGB-A, AWB or Tunable White		Lightsource Equipped with a CLS, Citizen or a Xicato LED module