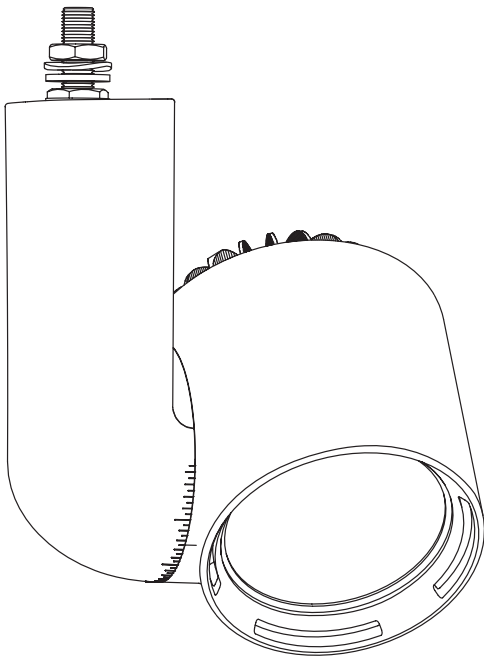


Index	2	Specifications	3
Safety information	2	Installation	4
Content	2	List of symbols	5
Technical	3		



SAFETY INFORMATION

Make sure all connectors are connected properly

Use a source of AC power that complies to local electrical codes

Block access below the work area when maintaining the unit

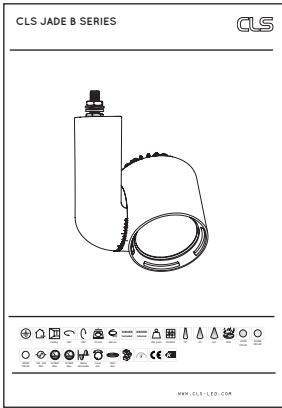
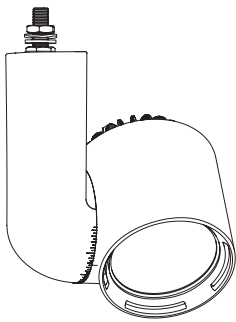
Don't modify or install genuine parts on this product

Don't install in a flammable or explosive area

Warning! Some surfaces can be hot

Ambiance Max. 40°

CONTENT



4000K CRI>90

100-240 VAC

20 Watt Max.

30 Watt Max.

Mains dimmable

Local dim

DALI dim

DRIVER Included

DRIVER Internal

780 gram

50,000 h

19°

37°

63°

IP20

2700K CRI>90

3000K CRI>90

Ceiling

360°

350°

10 mm

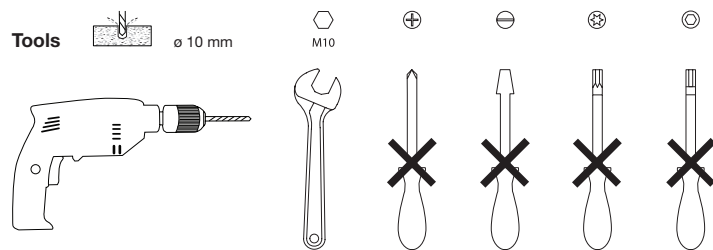
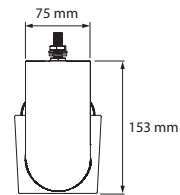
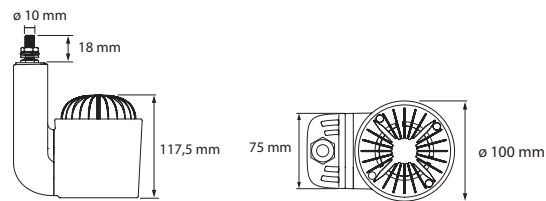
200 cm

5 YEAR WARRANTY

CE

A+

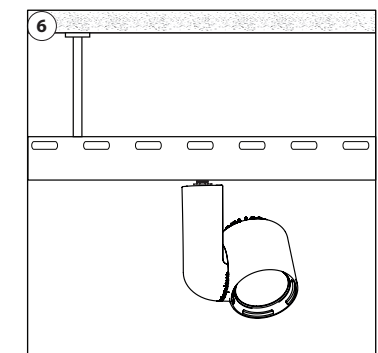
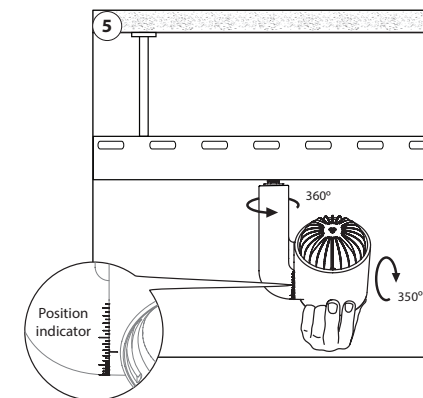
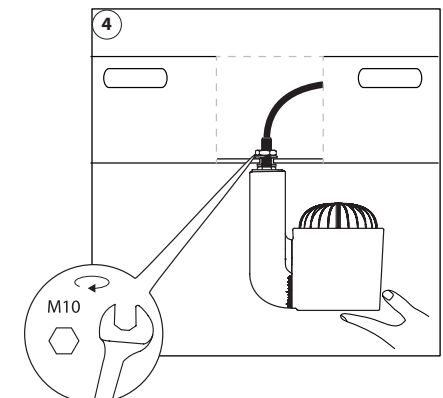
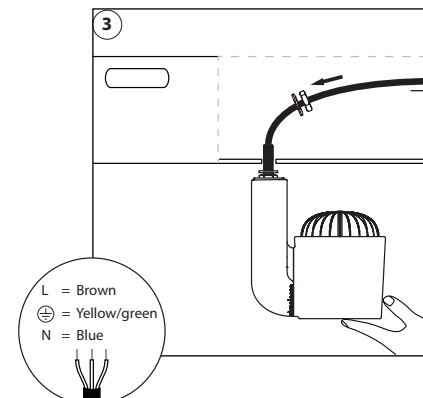
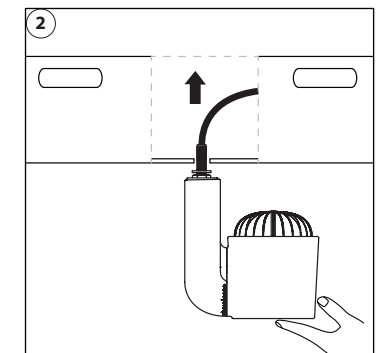
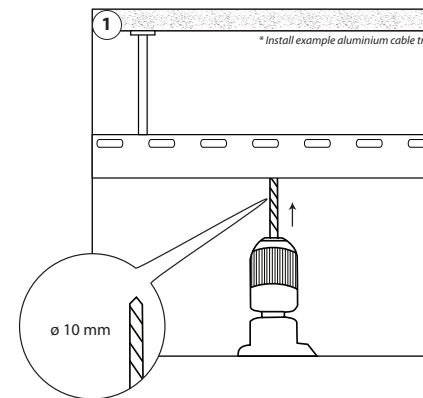
TECHNICAL



SPECIFICATIONS

LED:	High power
Available colours:	CRI 90: 2700K, 3000K & 4000K
Beam angle:	19°, 37° or 63°
Power supply:	100 ~ 240 VAC
Power consumption:	Max. 20 Watt (2000 lumen) Max. 30 Watt (3500 lumen) Max. 40 Watt (3850 lumen)
Housing:	Black, grey or white PC (PC-ABS V0) Heatsink black, grey or white coated aluminium
Weight:	780 gram
Cable Length:	200 cm
IP value:	IP20
Measurements:	171 x 100 x 100 mm (h x w x d)
Ambient temperature:	-10° C till +40° C

INSTALLATION



LIST OF SYMBOLS



Protection class
One, two or three



Application area
Indoor or outdoor



Application area
Floor, wall or ceiling



Swivel
Fixture is horizontally rotatable, indicated in degrees



Swivel
Fixture is vertically rotatable, indicated in degrees



Multiple connection
Daisychain connectivity



Installation depth
In centimeters



Installation size
In centimeters



Cable length
Maximum cable attached to the fixture in centimeters



Driver
Inclusive or exclusive Internal or external



Weight
In grams/kilograms



Pressure
Maximum pressure on the fixture in kg/cm²



Lifespan
Of the light source in hours



Lenses
Available lenses, indicated in degrees



Performance Zoom
Adjustable beam angle



LEDs
Kind of LED used in the fixture



Plug & play
Easy connection using the SmartConnect system



IP value
Ingress Protection classifies the degrees of protection provided against the intrusion of the product



Colour changing
RGB, RGB-W, RGB-A, AWB or Tunable White



Retail & Food LED modules
Clothing, furniture, kitchens, jewellery, shoes, bread, meat, fish and vegetables & fruit.



Colour
Available colours:
Amber, blue, red or green



White colour temperature
In different Kelvin values:
Cold white, neutral white, warm white or extra warm white



Curve
Minimal bending curve in centimeters



Cutting length
Indicated by the cutting marks



LED pitch
Pitch between the LEDs in millimeters



Power supply
In VDC, VAC or milliAmpere



Power consumption
In VA or Watt



Dimmable
1-10 Volt, Phase, individual, DMX dimmable or DALI



PWM dimming
Traditional PWM dimming, DMX analog or DMX Hybrid dim



Bluetooth controlled
By Casambi



Magneo dimming
Accurate dimming from 100 - 1% by using a magnet



Dynamic Control
Dynamic Power Control or Dynamic Temperature Control



DMX input
Fixture works on DMX512 protocol or Wireless DMX



Combined product
Compose your own fixture



Warranty
3 or 5 years warranty on the product



Conformité Européenne
CE marking for free marketability of industrial goods within the EU



Energy label



Lightsource
Equipped with a CLS, Bridgelux or a Xicato LED module

2025 CLS-LED BV. All rights reserved. Information subject to change without notice, CLS-LED BV and all affiliated companies disclaim liability for injury, damage direct or indirect loss, consequential or economic loss or any other loss occasioned by the use of, inability to use or reliance on the information contained in this manual. No part of this manual may be reproduced, in any form or by any means, without permission in writing from CLS-LED BV. Other legal information can be found in our General conditions, found on the back of your CLS-LED BV invoice, inside the CLS catalogue or on our website www.cls-led.com/General-Terms.pdf