

Index	2	Installation Eutrac adapter	5
Safety information	2	Programming / Magno Dim	6
Content	2	Lens replacement	8
Technical	3	Accessories	9
Specifications	3	Lens index	10
Installation Global adapter	4	List of symbols	11

SAFETY INFORMATION

Do not install in a flammable or explosive area

Do not stare into the LED

Ambiance
Max. 40°

Qualified technician

Disconnect the power supply before installing or maintaining

Make sure all connectors are connected properly

Use a source of AC power that complies to local electrical codes

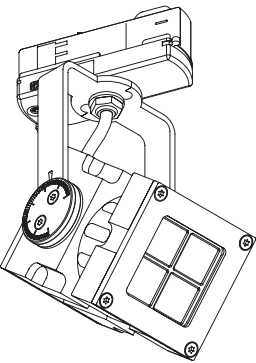
Block access below the work area when maintaining the unit

Don't modify or install genuine parts on this product

Don't install in a flammable or explosive area

Warning!
Some surfaces can be hot

CONTENT



CLS REVO COMPACT TRACK DMX

Ceiling

360°

360°

DRIVER INCLUDED

DRIVER INTERNAL

1,30 kg

50,000 h

8°

12°

30°

61°

80°

12 x 46°

4 x

IP20

2700K

3000K

4000K

5000K

6500K

Amber

Blue

Red

Green

100-240 VAC

Max. 10 Watt

DMX dimmable

1-100%

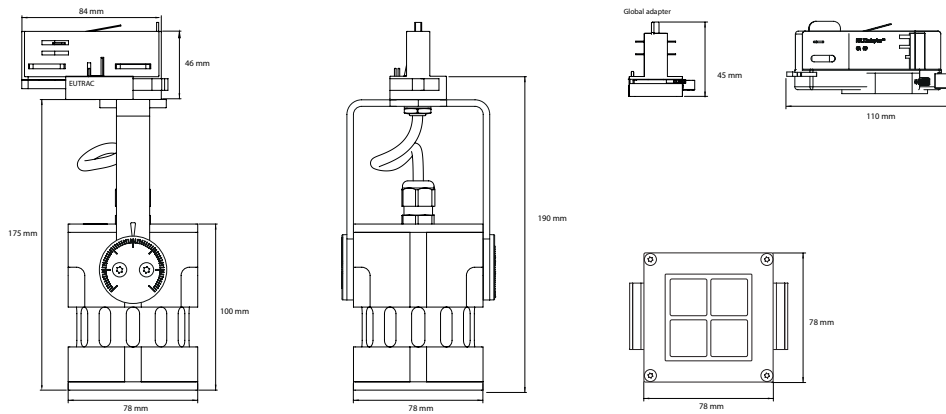
DMX 512

3 Year Warranty

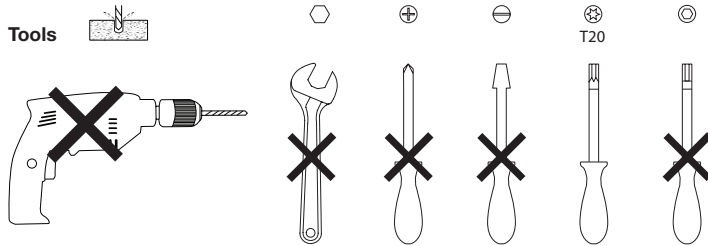
Cree/Luxeon

CE

A

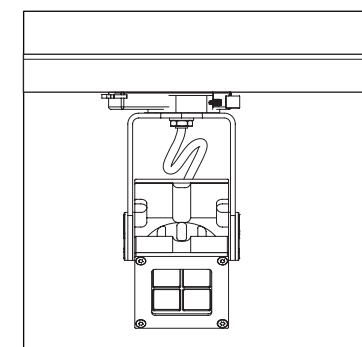
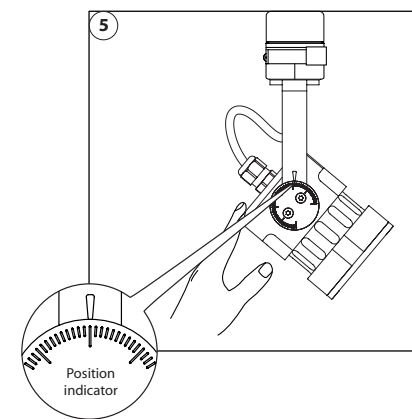
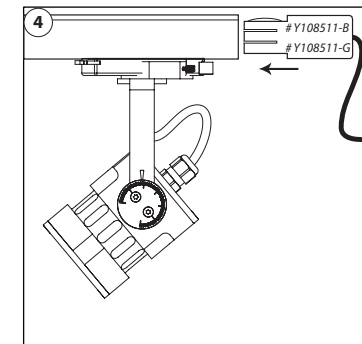
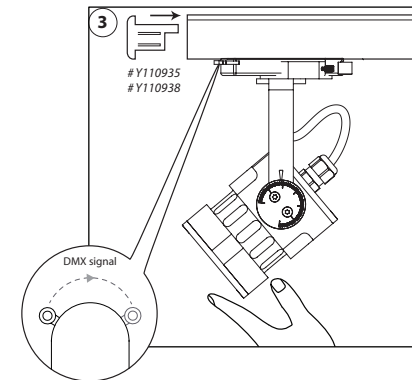
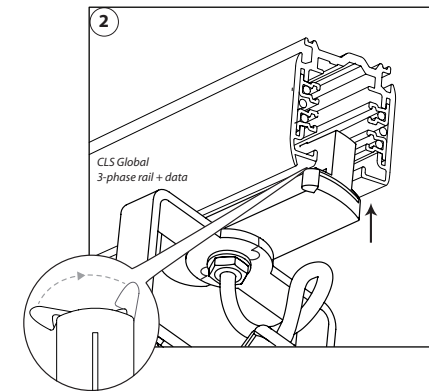
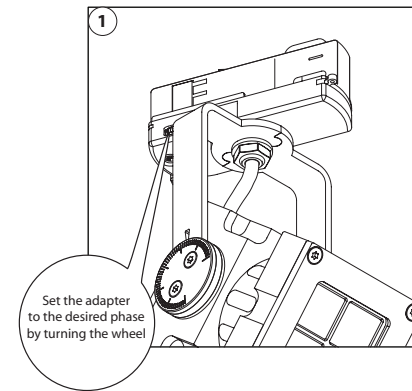


Tools



SPECIFICATIONS

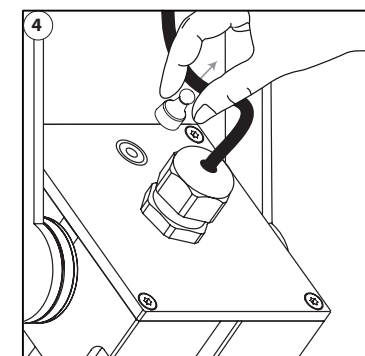
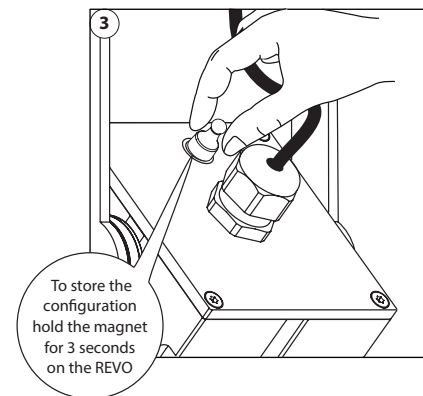
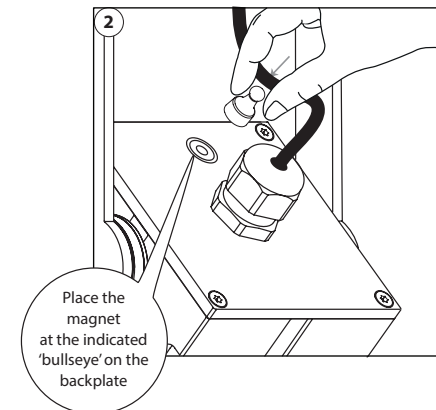
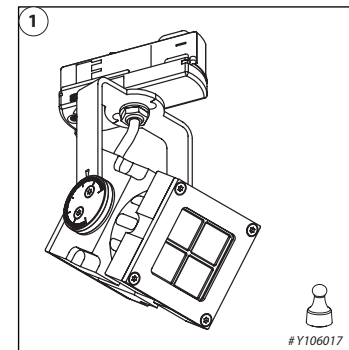
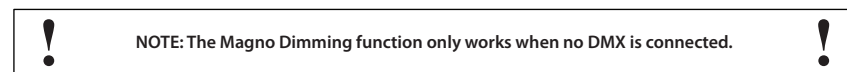
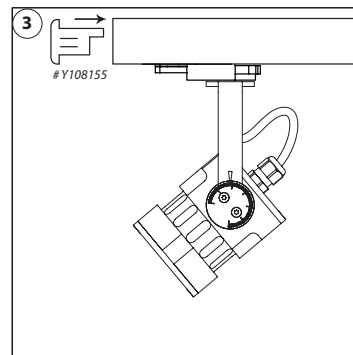
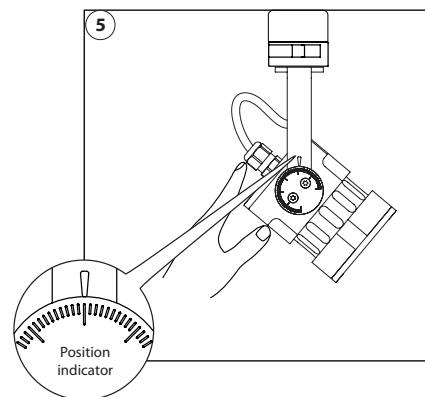
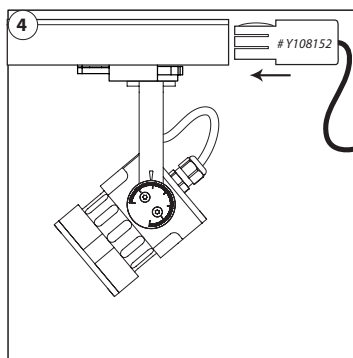
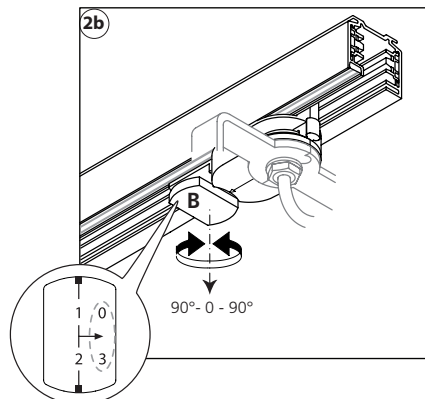
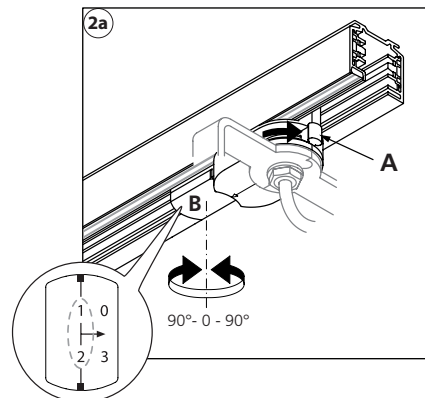
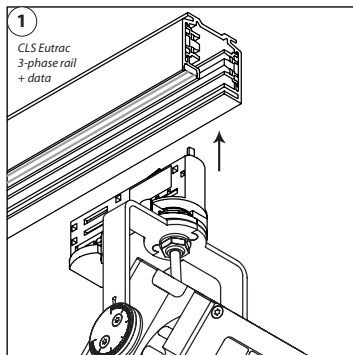
LED: 4 x High Power LED
 Available colours: 2200K, 2700K, 3000K, 4000K, 5000K, 6500K, amber, royal blue, lime green, green and red
 Lenses: 8°, 12°, 30°, 61°, 80° and 12x46°
 Power supply: 100 – 240 VAC
 Power consumption: Max. 10 Watt
 Housing: Anodised aluminum
 Weight: 1,3 kg
 IP value: IP20
 Measurements: 175 x 78 x 78 mm (hwxwd)
 Ambient temperature: -30° C till +40° C



INSTALLATION

With Eutrac adapter

PROGRAMMING



PROGRAMMING

Via DMX the Revo Track can be configured. After setting the DMX to the desired values just hold the magnet on the Revo's backplate at the 'bullseye'. Hold the magnet for approximately 3 seconds (step 3), when holding the magnet on the Revo it will turn on and when programming has finished the Revo will turn off again. When the light does not turn off after 3 seconds repower and try again.

Addressing

To configure address (1-255) set data on DMX channel 1:

0 = no changes are made.

1-255 = address is set to 1-255.

To configure address (256-508) set data on DMX channel 2:

0 = no changes are made.

1-253 = address is set to 256-508.

Examples:

Address 132 => set data 132 on DMX channel 1.

Address 278 => set data 23 on DMX channel 2.

Static brightness

When DMX fails or is not present the programmed brightness will become active.

To configure the static function set DMX channel 3 to the desired brightness.

0 = no changes are made.

1 = function disabled.

2-255 = brightness of the fixture.

Soft dim option

When active the Revo Track will have soft dim curve.

To configure the soft dim function set data on DMX channel 4.

0 = no changes are made.

<127 = function turned off.

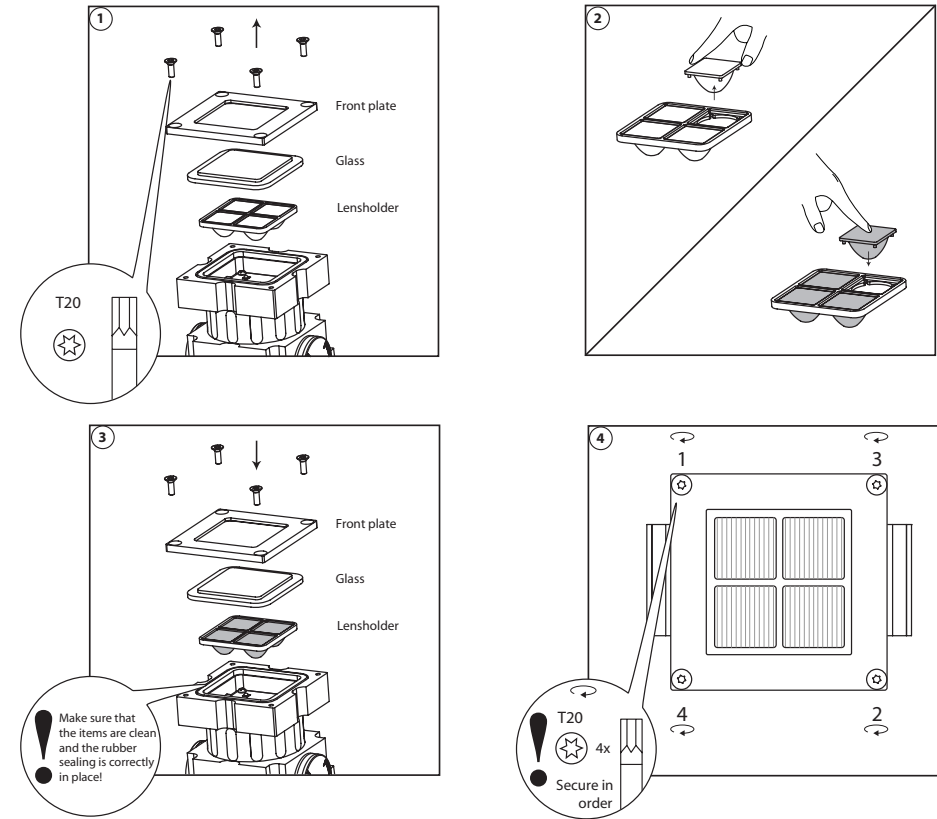
>127 = function turned on.

MAGNO DIMMING

Only works when no DMX is connected

1. Place the magnet on the backplate, at the indicated spot.
2. The Revo starts slowly dimming from 100 - 1% in approx. 30 seconds.
The dimming is very accurate and precise, so steps are very small.
3. At the desired intensity level, take away the magnet.
4. After 10 seconds the Revo flashes one time, the value has been stored on the internal memory.
5. When powering up the Revo, the stored value will be recalled from the internal memory.
6. If you want to have a lower value, replace the magnet and the Revo dims further to lower levels.
To store the new setting repeat step 3 - 5.
7. If the Revo is being dimmed to Level 0 and you have not programmed a value, it will automatically start at Level 100 and dim back from 100 - 1%.

LENS REPLACEMENT



ACCESSORIES

ACCESSORIES Global

Global - black

Y108501-B	CLS Global 3-phase rail + data 1 meter black
Y108502-B	CLS Global 3-phase rail + data 2 meter black
Y108503-B	CLS Global 3-phase rail + data 3 meter black
Y108504-B	CLS Global 3-phase rail + data 4 meter black
Y108511-B	CLS Global 3-phase rail + data end feed right, black
Y108512-B	CLS Global 3-phase rail + data end feed left, black
Y108513-B	CLS Global 3-phase rail + data middle feed black
Y108515-B	CLS Global 3-phase rail + data L-coupler inner black
Y108516-B	CLS Global 3-phase rail + data L-coupler outer black
Y110938	CLS Global 3-phase rail + data end cap black

Global - grey

Y108501-G	CLS Global 3-phase rail + data 1 meter grey
Y108502-G	CLS Global 3-phase rail + data 2 meter grey
Y108503-G	CLS Global 3-phase rail + data 3 meter grey
Y108504-G	CLS Global 3-phase rail + data 4 meter grey
Y108511-G	CLS Global 3-phase rail + data end feed right, grey
Y108512-G	CLS Global 3-phase rail + data end feed left, grey
Y108513-G	CLS Global 3-phase rail + data middle feed grey
Y108515-G	CLS Global 3-phase rail + data L-coupler inner grey
Y108516-G	CLS Global 3-phase rail + data L-coupler outer grey
Y110935	CLS Global 3-phase rail + data end cap grey

ACCESSORIES

Eutrac - black

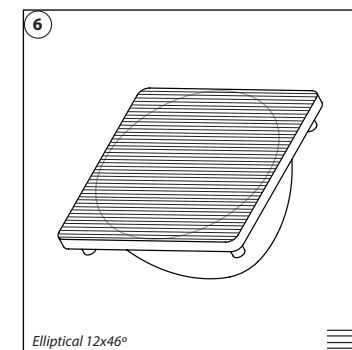
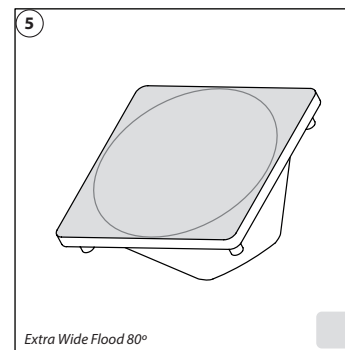
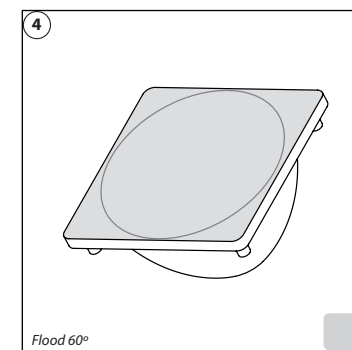
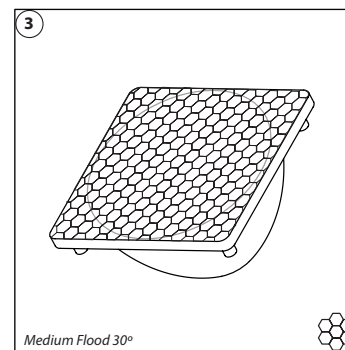
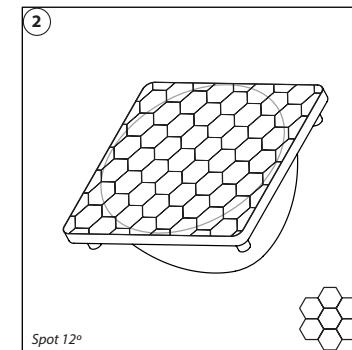
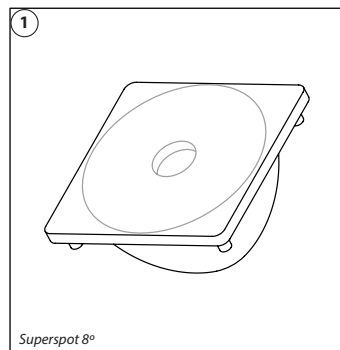
Y108112	CLS Eutrac 3-phase rail + data 1 meter black
Y108122	CLS Eutrac 3-phase rail + data 2 meter black
Y108132	CLS Eutrac 3-phase rail + data 3 meter black
Y108142	CLS Eutrac 3-phase rail + data 4 meter black
Y108152	CLS Eutrac 3-phase rail + data end feed right, black
Y108155	CLS Eutrac 3-phase rail + data end feed left, black
Y108158	CLS Eutrac 3-phase rail + data middle feed black
Y108162	CLS Eutrac 3-phase rail + data end cap black
Y108175	CLS Eutrac 3-phase rail + data L-coupler inner black
Y108178	CLS Eutrac 3-phase rail + data flex coupler black
Y108199	CLS Eutrac 3-phase + data monopoint black

Eutrac - white

Y108133	CLS Eutrac 3-phase rail + data 3 meter white
Y108153	CLS Eutrac 3-phase rail + data end feed right, white
Y108163	CLS Eutrac 3-phase rail + data end cap white

Y106017 CLS Magnet pin (5 pcs)

LENS INDEX



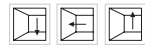
LIST OF SYMBOLS



Protection class
One, two or three



Application area
Indoor or outdoor



Application area
Floor, wall or ceiling



Swivel
Fixture is horizontally rotatable, indicated in degrees



Swivel
Fixture is vertically rotatable, indicated in degrees



Multiple connection
Daisychain connectivity



Installation depth
In centimeters



Installation size
In centimeters



Cable length
Maximum cable attached to the fixture in centimeters



Driver
Inclusive or exclusive Internal or external



Weight
In grams/kilograms



Pressure
Maximum pressure on the fixture in kg/cm²



Lifespan
Of the light source in hours



Lenses
Available lenses, indicated in degrees



Performance Zoom
Adjustable beam angle



LEDs
Kind of LED used in the fixture



Plug & play
Easy connection using the SmartConnect system



Plug & play
Easy connection using the SmartConnect system



IP value
Ingress Protection classifies the degrees of protection provided against the intrusion of the product



Colour changing
RGB, RGB-W, RGB-A, AWB or Tunable White



Retail & Food LED modules
Clothing, furniture, kitchens, jewellery, shoes, bread, meat, fish and vegetables & fruit.



Colour
Available colours: Amber, blue, red or green



White colour temperature
In different Kelvin values; Cold white, neutral white, warm white or extra warm white



Curve
Minimal bending curve in centimeters



Cutting length
Indicated by the cutting marks



LED pitch
Pitch between the LEDs in millimeters



Power supply
In VDC, VAC or milliAmpere



Power consumption
In VA or Watt



Dimmable
1-10 Volt, Phase, individual, DMX dimmable or DALI



PWM dimming
Traditional PWM dimming, DMX analog or DMX Hybrid dim



Bluetooth controlled
By Casambi



Magne dimming
Accurate dimming from 100 - 1% by using a magnet



Dynamic Control
Dynamic Power Control or Dynamic Temperature Control



DMX input
Fixture works on DMX512 protocol or Wireless DMX



Combined product
Compose your own fixture



Warranty
3 or 5 years warranty on the product



Conformité Européenne
CE marking for free marketability of industrial goods within the EU



Energy label



Lightsource
Equipped with a CLS, Bridgelux or a Xicato LED module

2025 CLS-LED BV. All rights reserved. Information subject to change without notice, CLS-LED BV and all affiliated companies disclaim liability for injury, damage direct or indirect loss, consequential or economic loss or any other loss occasioned by the use of, inability to use or reliance on the information contained in this manual. No part of this manual may be reproduced, in any form or by any means, without permission in writing from CLS-LED BV. Other legal information can be found in our General conditions, found on the back of your CLS-LED BV invoice, inside the CLS catalogue or on our website www.cls-led.com/General-Terms.pdf