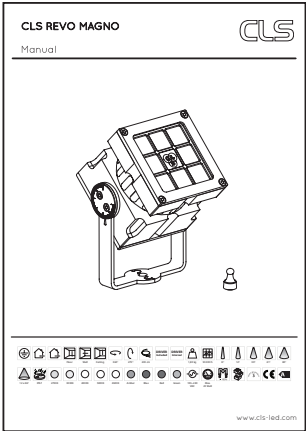
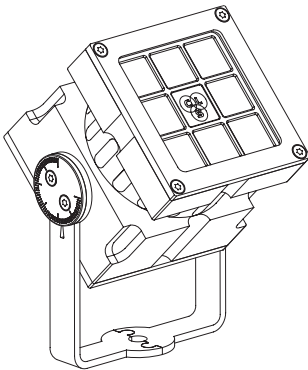


Index	2	Installation	4
Safety information	2	Magno dimming	5
Content	2	Lens replacement	6
Technical	3	Lens index	7
Specifications	3	List of symbols	8

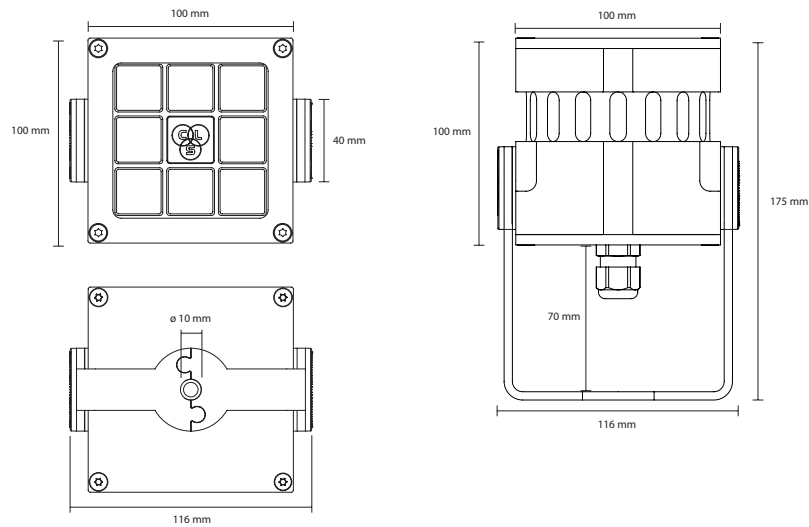
SAFETY INFORMATION

Make sure all connectors are connected properly	Use a source of AC power that complies to local electrical codes	Block access below the work area when maintaining the unit	Don't modify or install genuine parts on this product	Don't install in a flammable or explosive area	Warning! Some surfaces can be hot

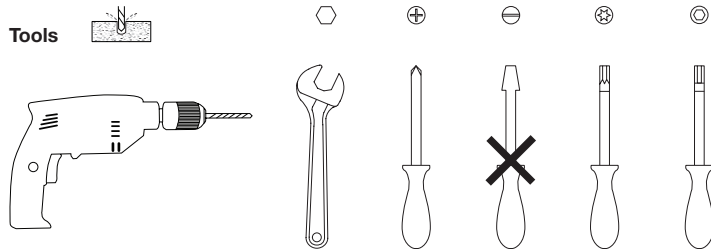
CONTENT



12 x 46°	IP67	2700K	3000K	4000K	5000K	6500K	Amber	Blue	Red	Green	100-240 VAC	Max. 20 Watt	1-100%	3	CE	A



Tools

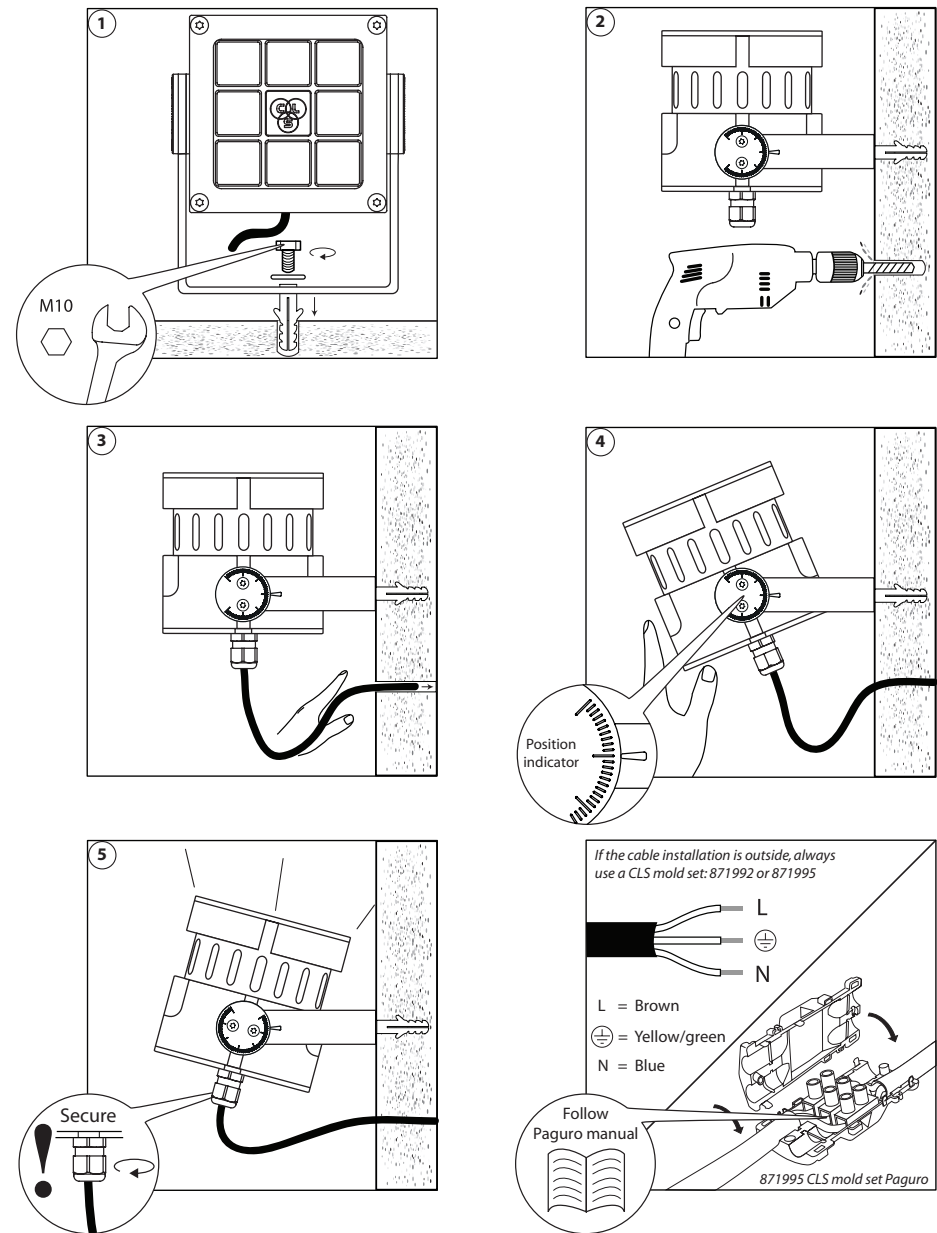


SPECIFICATIONS

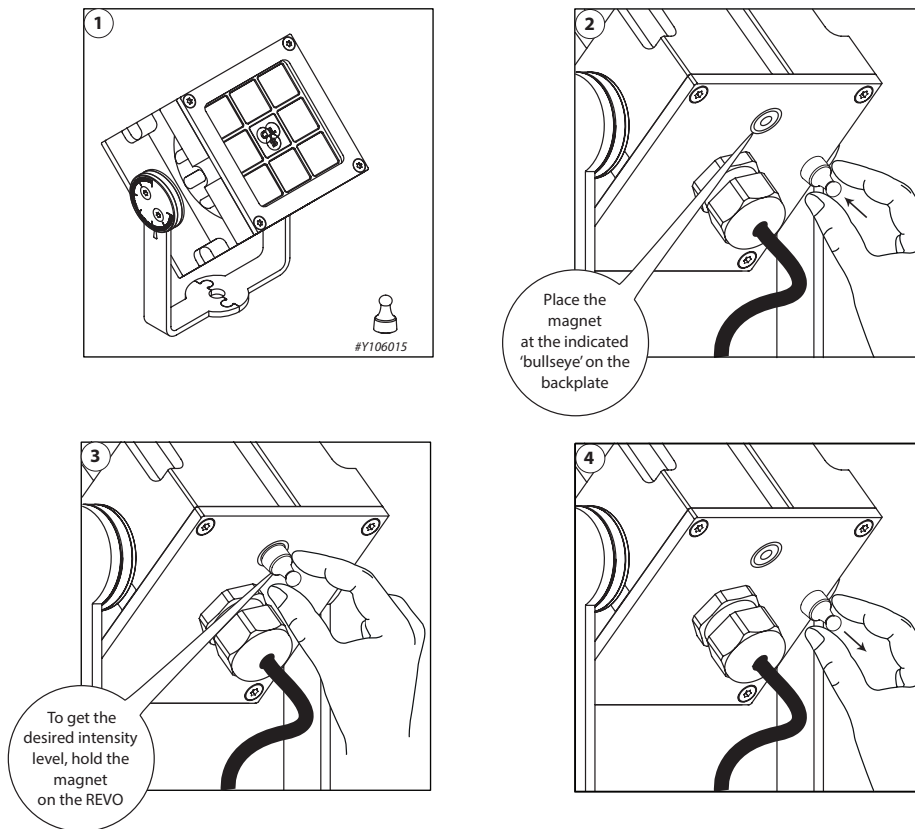
LED: 8 x High Power LED
 Available colours: 2700K, 3000K, 4000K, 5000K, 6500K, amber, royal blue, lime green, green & red
 Lenses: 8°, 12°, 30°, 61°, 80° and 12x46°
 Power supply: 100 ~ 240 VAC
 Power consumption: Max. 20 Watt
 Housing: Anodised aluminum
 Weight: 1,9 kg
 IP value: IP67
 Cable length: 2 meters
 Measurements: 175 x 116 x 100 mm (h x w x d)
 Ambient temperature: -30° C till +50° C

ACCESSORIES

110415 CLS Revo lens kit superspot 8° 8 pcs of lenses
 110425 CLS Revo lens kit spot 12° 8 pcs of lenses
 110435 CLS Revo lens kit medium flood 30° 8 pcs of lenses
 110445 CLS Revo lens kit wide flood 61° 8 pcs of lenses
 110455 CLS Revo lens kit elliptical 12x46° 8 pcs of lenses
 871995 CLS mold set Paguro grey
 Y106016 CLS Magenet pin (4 pcs)

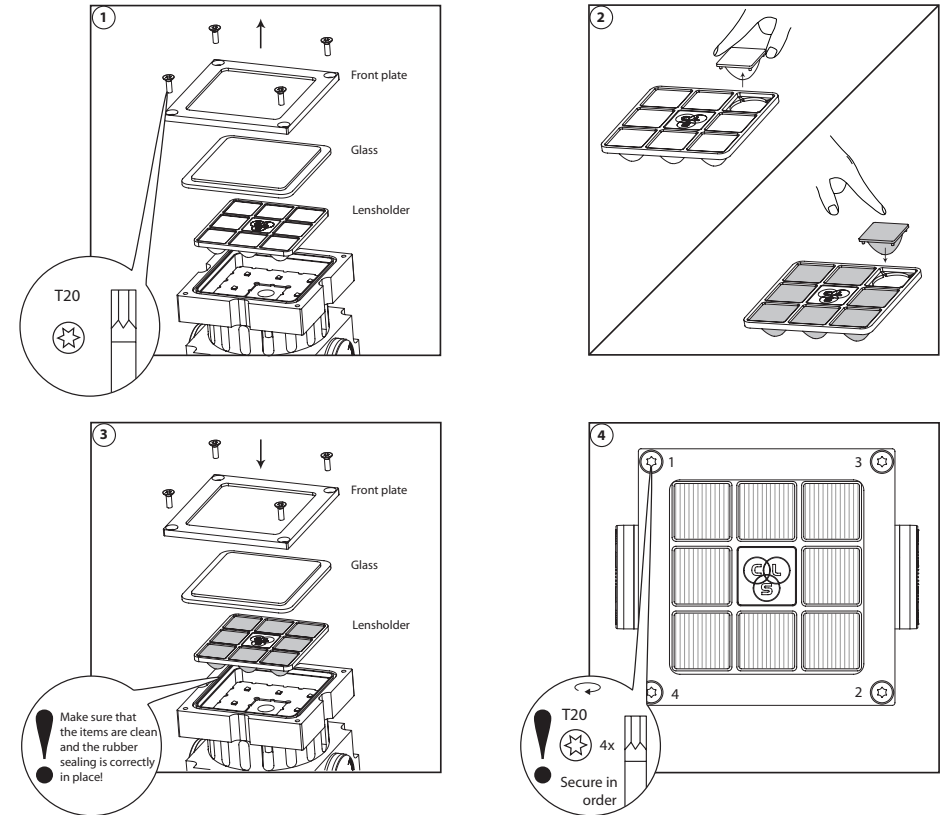


MAGNO DIMMING



1. Place the magnet on the backplate, at the indicated spot.
2. The Revo starts slowly dimming from 100 – 1% in approx. 30 seconds.
The dimming is very accurate and precise, so steps are very small.
3. At the desired intensity level, take away the magnet.
4. After 10 seconds the Revo flashes one time, the value has been stored on the internal memory.
5. When powering up the Revo, the stored value will be recalled from the internal memory.
6. If you want to have a lower value, replace the magnet and the Revo dims further to lower levels.
To store the new setting repeat step 3 – 5.
7. If the Revo is being dimmed to Level 0 and you have not programmed a value, it will automatically start at Level 100 and dim back from 100 – 1%.

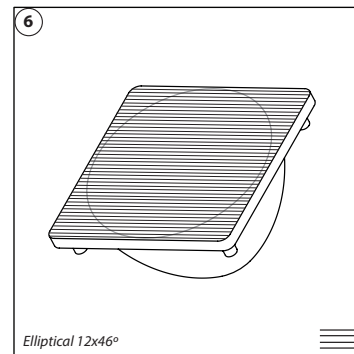
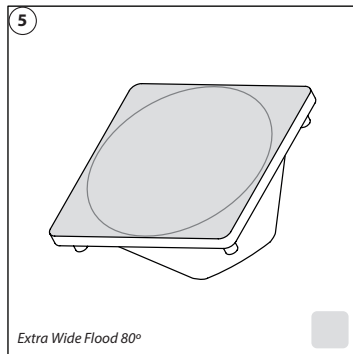
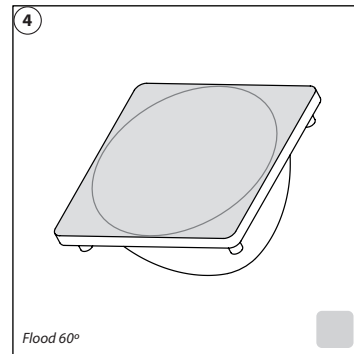
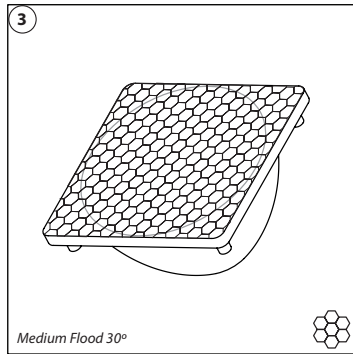
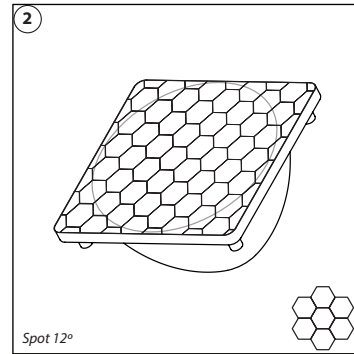
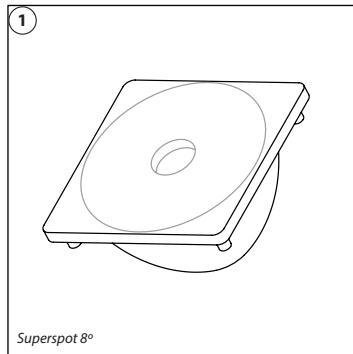
LENS REPLACEMENT



2025 CLS-LED BV. All rights reserved. Information subject to change without notice. CLS-LED BV and all affiliated companies disclaim liability for injury, damage direct or indirect loss, consequential or economic loss or any other loss occasioned by the use of, inability to use or reliance on the information contained in this manual. No part of this manual may be reproduced, in any form or by any means, without permission in writing from CLS-LED BV. Other legal information can be found in our General conditions, found on the back of your CLS-LED BV invoice, inside the CLS catalogue or on our website www.cls-led.com/General-Terms.pdf

LENS INDEX

LIST OF SYMBOLS



Protection class
One, two or three

Application area
Indoor or outdoor

Application area
Floor, wall or ceiling

Swivel
Fixture is horizontally rotatable, indicated in degrees

Swivel
Fixture is vertically rotatable, indicated in degrees

Multiple connection
Daisychain connectivity

Installation depth
In centimeters

Installation size
In centimeters

Cable length
Maximum cable attached to the fixture in centimeters

Driver
Inclusive or exclusive internal or external

Weight
In grams/kilograms

Pressure
Maximum pressure on the fixture in kg/cm²

Lifespan
Of the light source in hours

Lenses
Available lenses, indicated in degrees

Performance Zoom
Adjustable beam angle

LEDs
Kind of LED used in the fixture

Plug & play
Easy connection using the SmartConnect system

IP value
Ingress Protection classifies the degrees of protection provided against the intrusion of the product

Colour changing
RGB, RGB-w, RGB-A, AWB or Tunable White

Retail & Food LED modules
Clothing, furniture, kitchens, jewellery, shoes, bread, meat, fish and vegetables & fruit.

Colour
Available colours: Amber, blue, red or green

White colour temperature
In different Kelvin values: Cold white, neutral white, warm white or extra warm white

Curve
Minimal bending curve in centimeters

Cutting length
Indicated by the cutting marks

LED pitch
Pitch between the LEDs in millimeters

Power supply
In VDC, VAC or milliAmpere

Power consumption
In VA or Watt

Dimmable
1-10 Volt, Phase, individual, DMX dimmable or DALI

PWM dimming
Traditional PWM dimming, DMX analog or DMX Hybrid dim

Bluetooth controlled
By Casambi

Magno dimming
Accurate dimming from 100 - 1% by using a magnet

Dynamic Control
Dynamic Power Control or Dynamic Temperature Control

DMX input
Fixture works on DMX512 protocol or Wireless DMX

Combined product
Compose your own fixture

Warranty
3 or 5 years warranty on the product

Conformité Européenne
CE marking for free marketability of industrial goods within the EU

Energy label

Lightsource
Equipped with a CLS, Bridgelux or a Xicato LED module